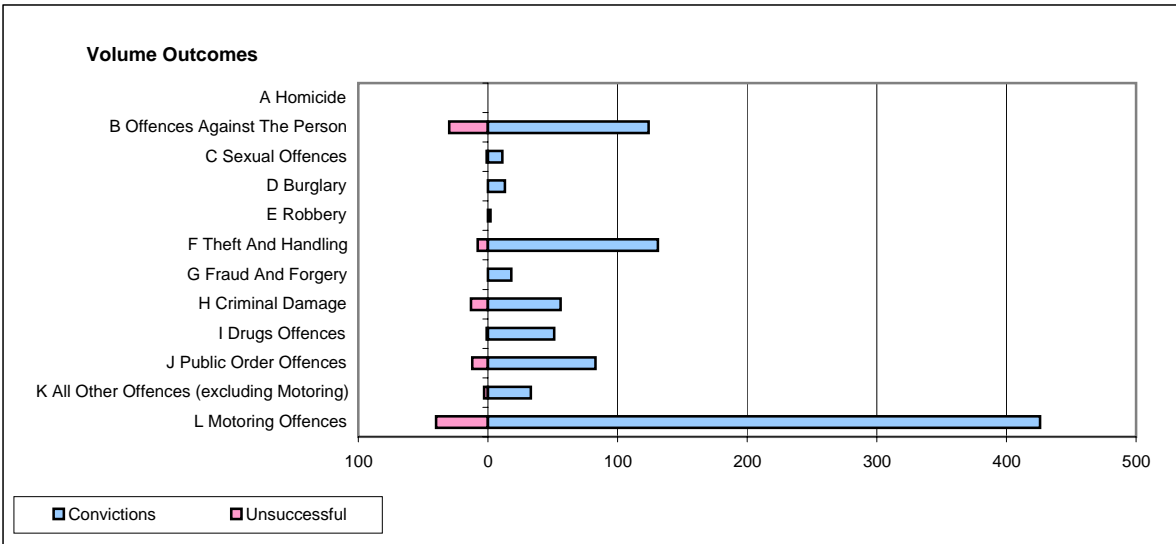
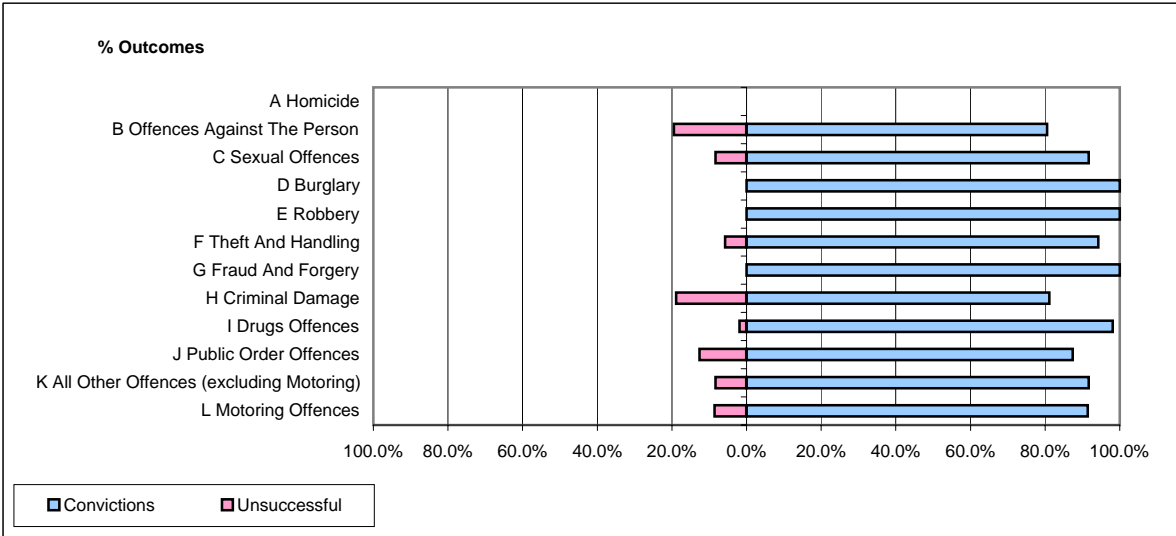


CPS OUTCOMES BY PRINCIPAL OFFENCE CATEGORY

May 2008

P26-Norfolk



	Convictions		Unsuccessful	
	Number of Defendants	%	Number of Defendants	%
A Homicide	0	0	0	0
B Offences Against The Person	124	80.5%	30	19.5%
C Sexual Offences	11	91.7%	1	8.3%
D Burglary	13	100.0%	0	0.0%
E Robbery	2	100.0%	0	0.0%
F Theft And Handling	131	94.2%	8	5.8%
G Fraud And Forgery	18	100.0%	0	0.0%
H Criminal Damage	56	81.2%	13	18.8%
I Drugs Offences	51	98.1%	1	1.9%
J Public Order Offences	83	87.4%	12	12.6%
K All Other Offences (excluding Motoring)	33	91.7%	3	8.3%
L Motoring Offences	426	91.4%	40	8.6%
Admin Finalisations	0	0.0%	17	100.0%
TOTAL	948	88.4%	125	11.6%