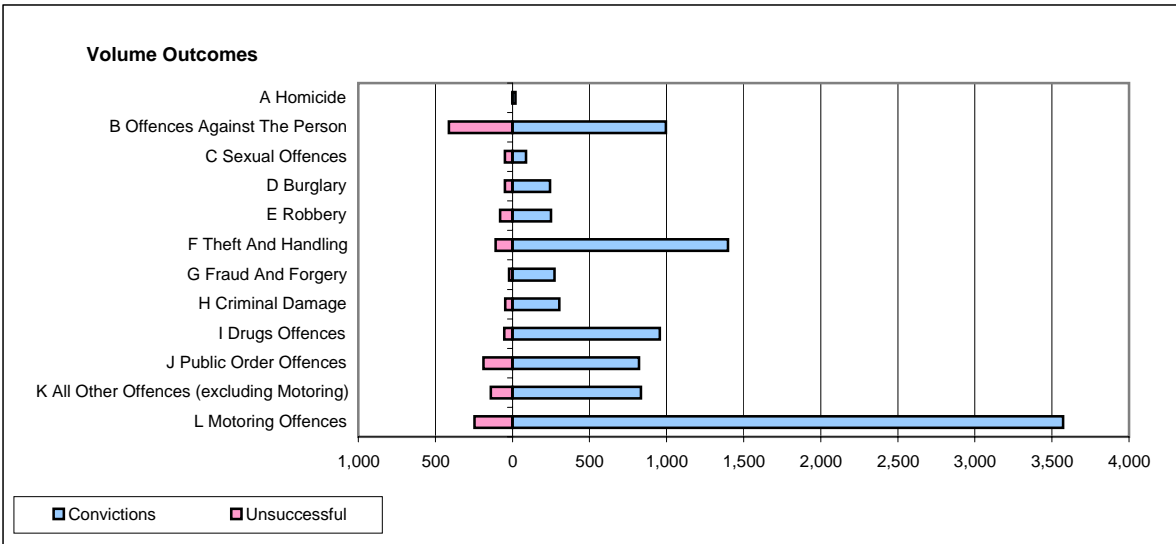
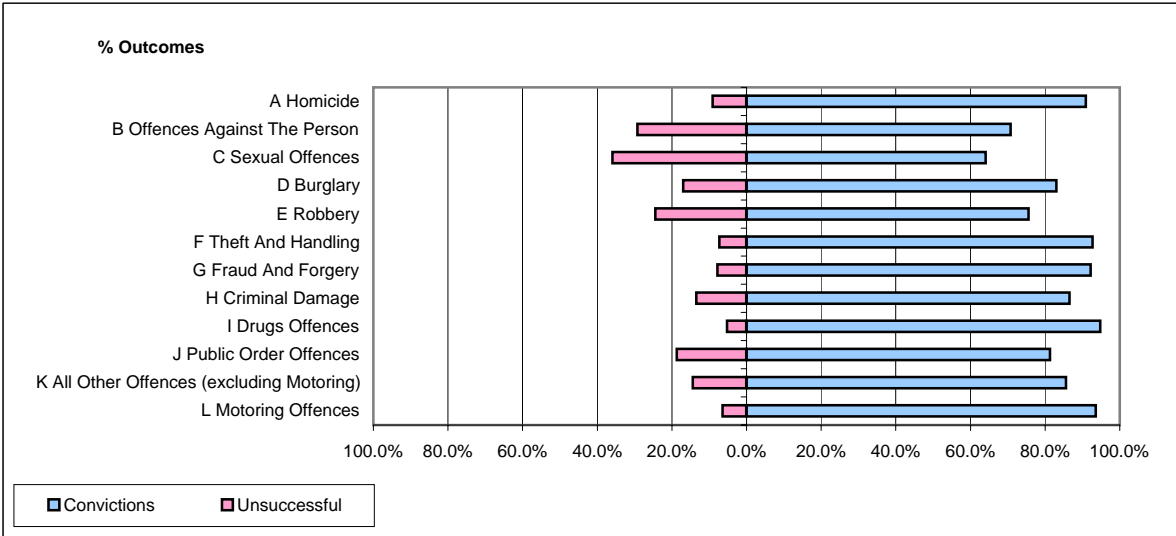


CPS OUTCOMES BY PRINCIPAL OFFENCE CATEGORY

May 2008

P25-Metropolitan&City



	Convictions		Unsuccessful	
	Number of Defendants	%	Number of Defendants	%
A Homicide	20	90.9%	2	9.1%
B Offences Against The Person	995	70.7%	412	29.3%
C Sexual Offences	89	64.0%	50	36.0%
D Burglary	244	83.0%	50	17.0%
E Robbery	250	75.5%	81	24.5%
F Theft And Handling	1,399	92.7%	110	7.3%
G Fraud And Forgery	272	92.2%	23	7.8%
H Criminal Damage	303	86.6%	47	13.4%
I Drugs Offences	955	94.7%	53	5.3%
J Public Order Offences	821	81.3%	189	18.7%
K All Other Offences (excluding Motoring)	833	85.6%	140	14.4%
L Motoring Offences	3,572	93.6%	246	6.4%
Admin Finalisations	0	0.0%	380	100.0%
TOTAL	9,753	84.5%	1,783	15.5%