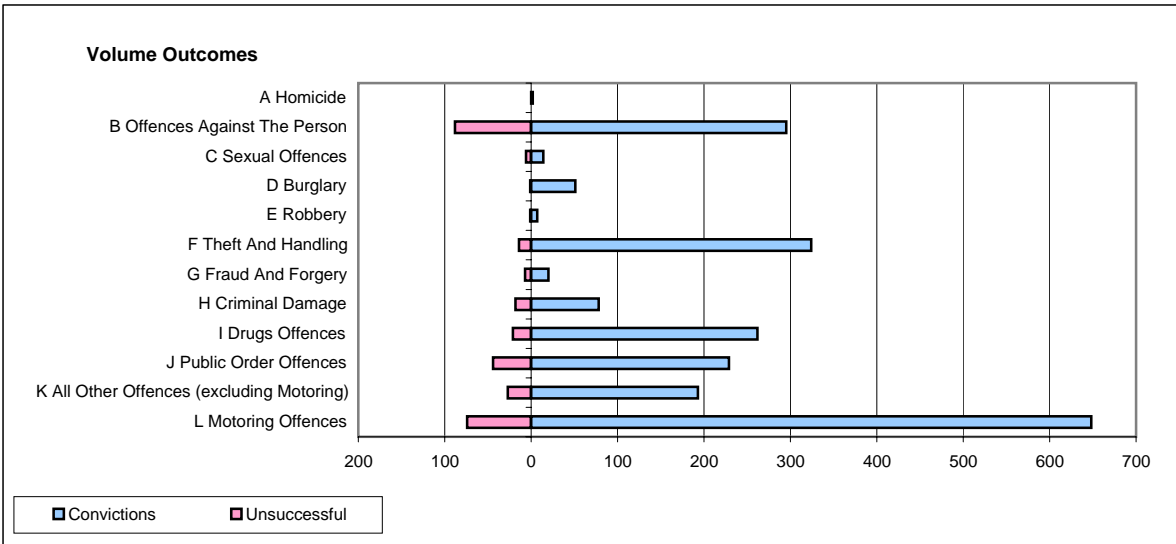
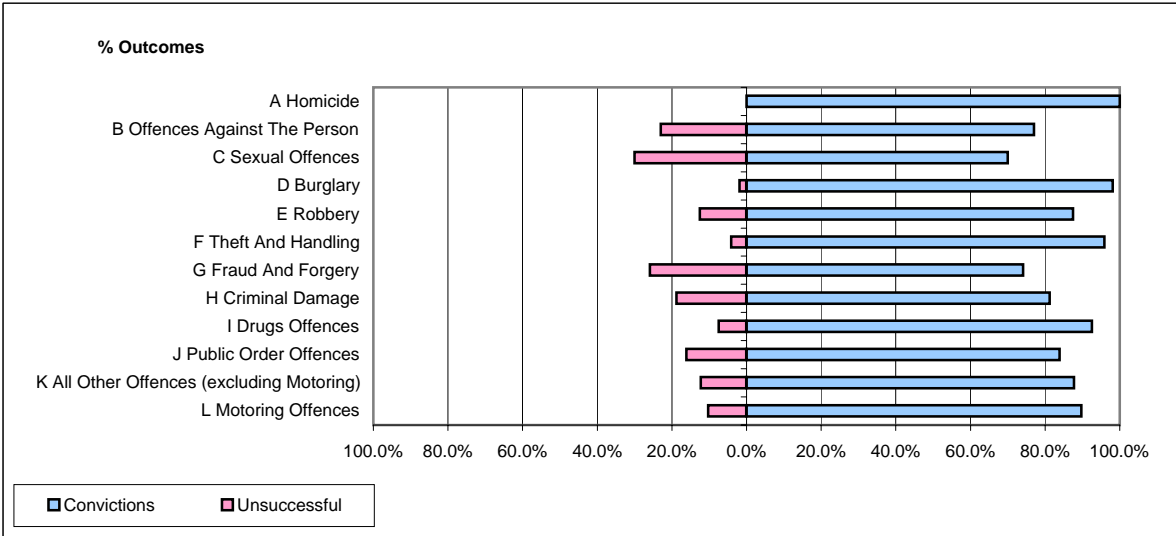


CPS OUTCOMES BY PRINCIPAL OFFENCE CATEGORY

May 2008

P24-Merseyside



	Convictions		Unsuccessful	
	Number of Defendants	%	Number of Defendants	%
A Homicide	2	100.0%	0	0.0%
B Offences Against The Person	295	77.0%	88	23.0%
C Sexual Offences	14	70.0%	6	30.0%
D Burglary	51	98.1%	1	1.9%
E Robbery	7	87.5%	1	12.5%
F Theft And Handling	324	95.9%	14	4.1%
G Fraud And Forgery	20	74.1%	7	25.9%
H Criminal Damage	78	81.3%	18	18.8%
I Drugs Offences	262	92.6%	21	7.4%
J Public Order Offences	229	83.9%	44	16.1%
K All Other Offences (excluding Motoring)	193	87.7%	27	12.3%
L Motoring Offences	648	89.8%	74	10.2%
Admin Finalisations	0	0.0%	28	100.0%
TOTAL	2,123	86.6%	329	13.4%