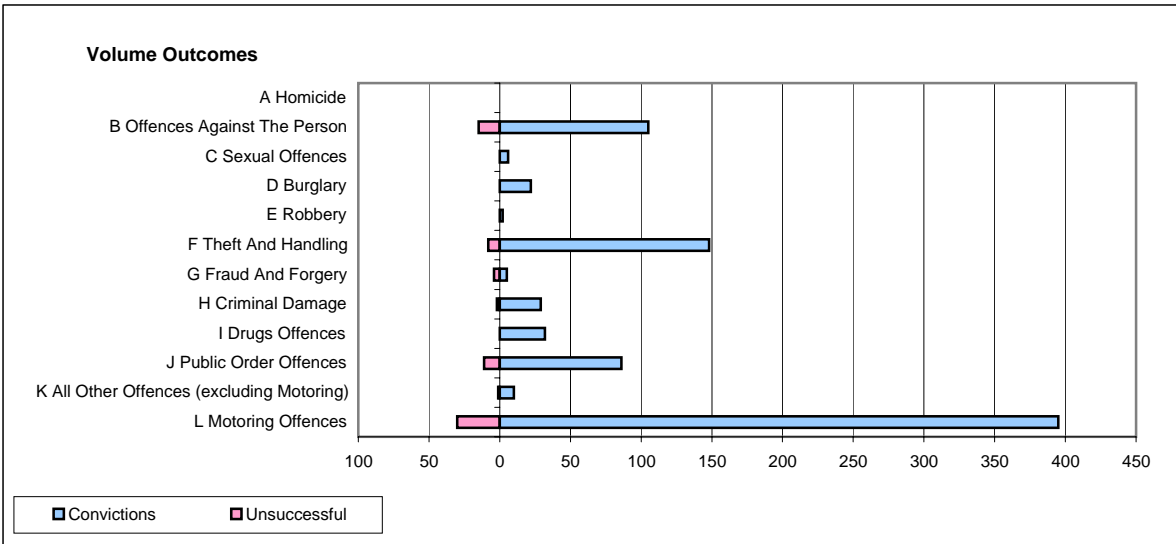
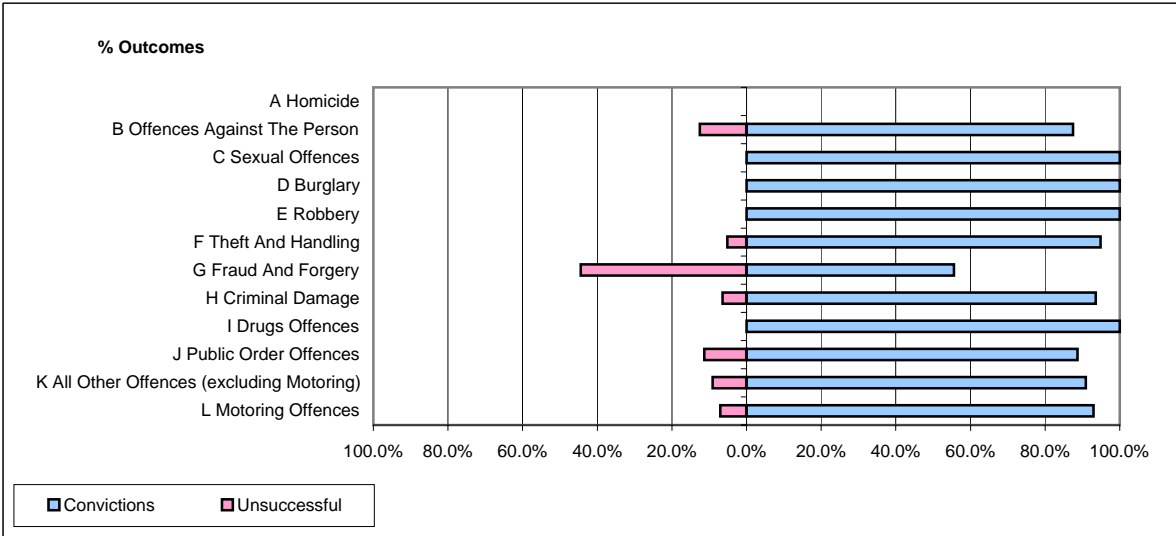


CPS OUTCOMES BY PRINCIPAL OFFENCE CATEGORY

May 2008

P23-Lincolnshire



| | Convictions | | Unsuccessful | |
|--|----------------------|---------------|----------------------|---------------|
| | Number of Defendants | % | Number of Defendants | % |
| A Homicide | 0 | 0 | 0 | 0 |
| B Offences Against The Person | 105 | 87.5% | 15 | 12.5% |
| C Sexual Offences | 6 | 100.0% | 0 | 0.0% |
| D Burglary | 22 | 100.0% | 0 | 0.0% |
| E Robbery | 2 | 100.0% | 0 | 0.0% |
| F Theft And Handling | 148 | 94.9% | 8 | 5.1% |
| G Fraud And Forgery | 5 | 55.6% | 4 | 44.4% |
| H Criminal Damage | 29 | 93.5% | 2 | 6.5% |
| I Drugs Offences | 32 | 100.0% | 0 | 0.0% |
| J Public Order Offences | 86 | 88.7% | 11 | 11.3% |
| K All Other Offences (excluding Motoring) | 10 | 90.9% | 1 | 9.1% |
| L Motoring Offences | 395 | 92.9% | 30 | 7.1% |
| Admin Finalisations | 0 | 0.0% | 6 | 100.0% |
| TOTAL | 840 | 91.6% | 77 | 8.4% |