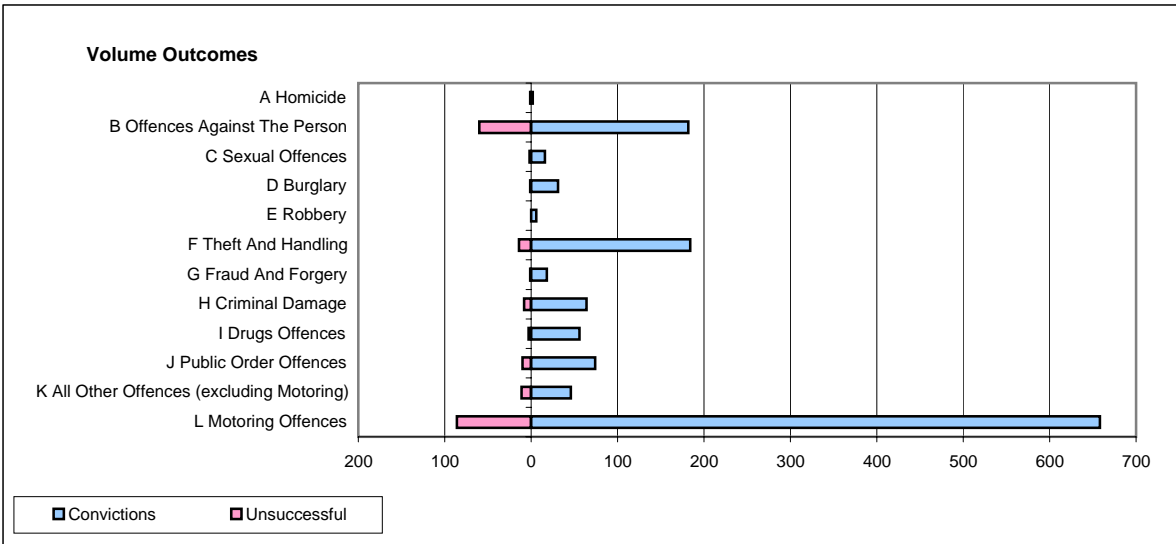
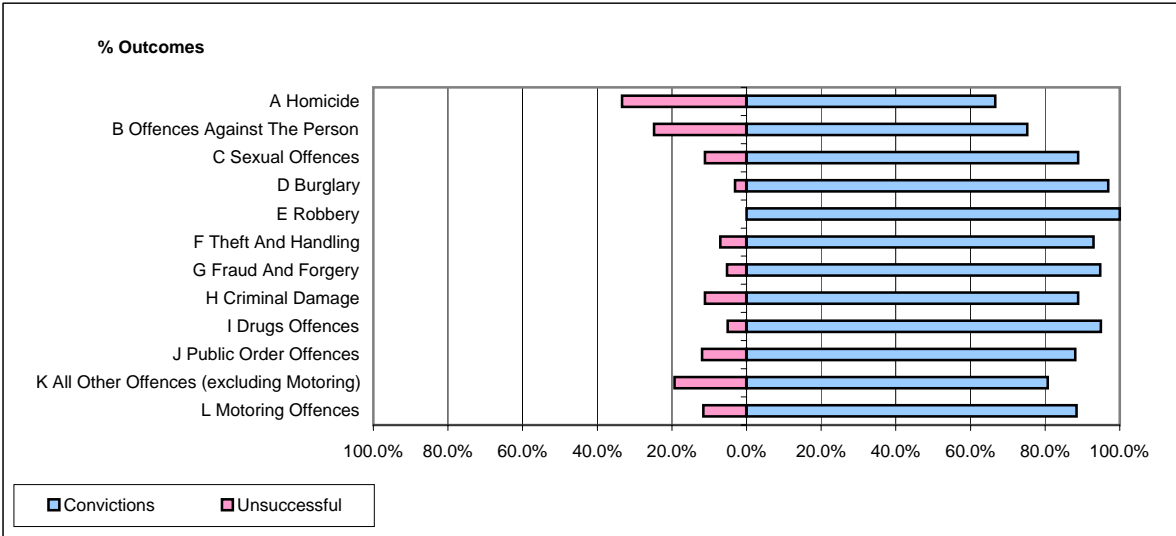


**CPS OUTCOMES BY PRINCIPAL OFFENCE CATEGORY**

**May 2008**

**P22-Leicestershire**



	Convictions		Unsuccessful	
	Number of Defendants	%	Number of Defendants	%
<b>A Homicide</b>	<b>2</b>	<b>66.7%</b>	<b>1</b>	<b>33.3%</b>
<b>B Offences Against The Person</b>	<b>182</b>	<b>75.2%</b>	<b>60</b>	<b>24.8%</b>
<b>C Sexual Offences</b>	<b>16</b>	<b>88.9%</b>	<b>2</b>	<b>11.1%</b>
<b>D Burglary</b>	<b>31</b>	<b>96.9%</b>	<b>1</b>	<b>3.1%</b>
<b>E Robbery</b>	<b>6</b>	<b>100.0%</b>	<b>0</b>	<b>0.0%</b>
<b>F Theft And Handling</b>	<b>184</b>	<b>92.9%</b>	<b>14</b>	<b>7.1%</b>
<b>G Fraud And Forgery</b>	<b>18</b>	<b>94.7%</b>	<b>1</b>	<b>5.3%</b>
<b>H Criminal Damage</b>	<b>64</b>	<b>88.9%</b>	<b>8</b>	<b>11.1%</b>
<b>I Drugs Offences</b>	<b>56</b>	<b>94.9%</b>	<b>3</b>	<b>5.1%</b>
<b>J Public Order Offences</b>	<b>74</b>	<b>88.1%</b>	<b>10</b>	<b>11.9%</b>
<b>K All Other Offences (excluding Motoring)</b>	<b>46</b>	<b>80.7%</b>	<b>11</b>	<b>19.3%</b>
<b>L Motoring Offences</b>	<b>658</b>	<b>88.4%</b>	<b>86</b>	<b>11.6%</b>
<b>Admin Finalisations</b>	<b>0</b>	<b>0.0%</b>	<b>27</b>	<b>100.0%</b>
<b>TOTAL</b>	<b>1,337</b>	<b>85.7%</b>	<b>224</b>	<b>14.3%</b>