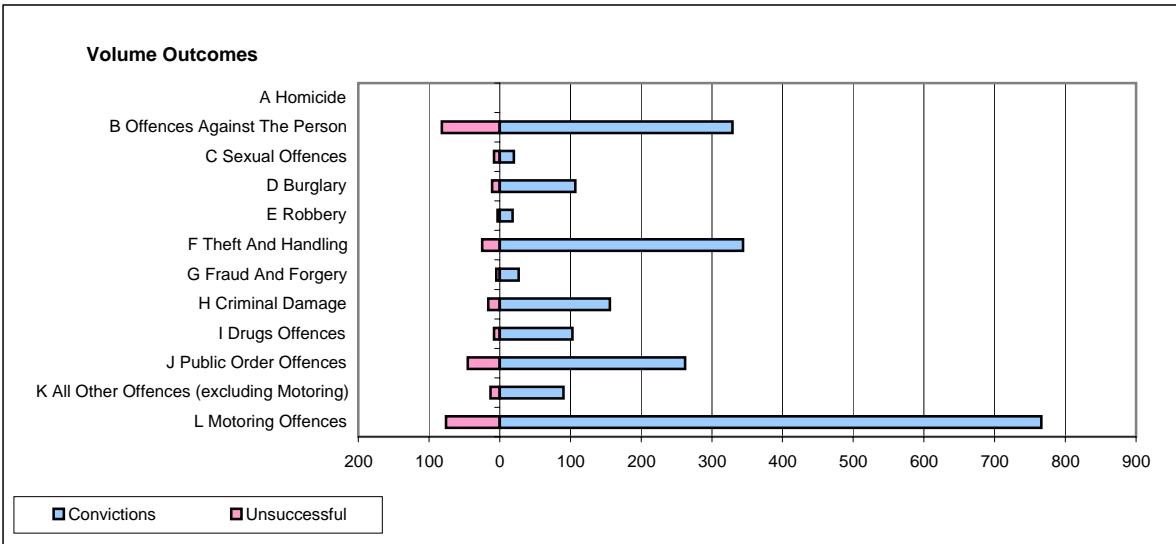
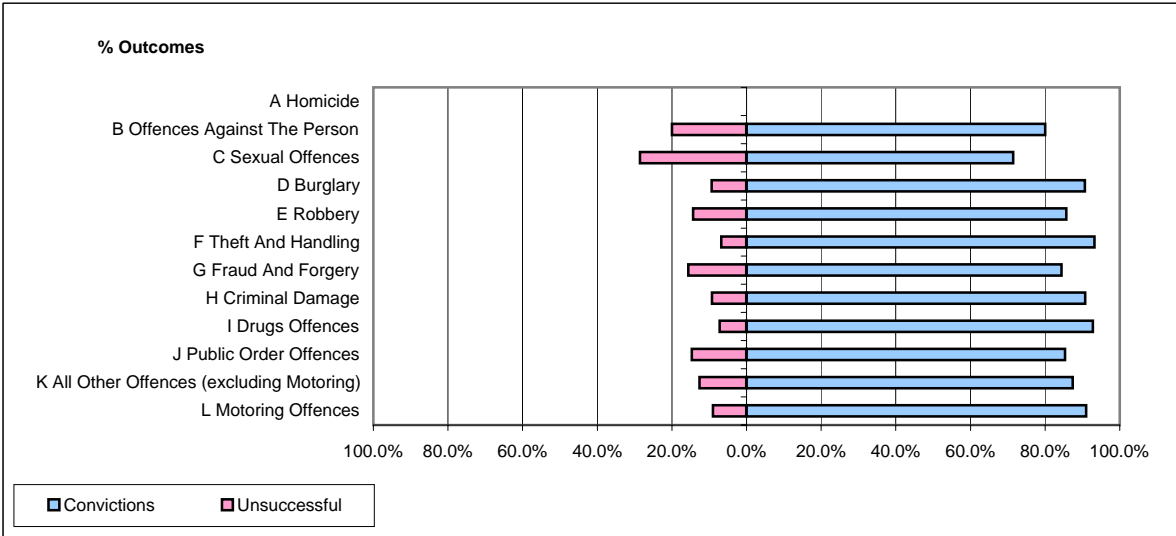


**CPS OUTCOMES BY PRINCIPAL OFFENCE CATEGORY**

**May 2008**

**P21-Lancashire**



	Convictions		Unsuccessful	
	Number of Defendants	%	Number of Defendants	%
<b>A Homicide</b>	<b>0</b>	<b>0</b>	<b>0</b>	<b>0</b>
<b>B Offences Against The Person</b>	<b>329</b>	<b>80.0%</b>	<b>82</b>	<b>20.0%</b>
<b>C Sexual Offences</b>	<b>20</b>	<b>71.4%</b>	<b>8</b>	<b>28.6%</b>
<b>D Burglary</b>	<b>107</b>	<b>90.7%</b>	<b>11</b>	<b>9.3%</b>
<b>E Robbery</b>	<b>18</b>	<b>85.7%</b>	<b>3</b>	<b>14.3%</b>
<b>F Theft And Handling</b>	<b>344</b>	<b>93.2%</b>	<b>25</b>	<b>6.8%</b>
<b>G Fraud And Forgery</b>	<b>27</b>	<b>84.4%</b>	<b>5</b>	<b>15.6%</b>
<b>H Criminal Damage</b>	<b>156</b>	<b>90.7%</b>	<b>16</b>	<b>9.3%</b>
<b>I Drugs Offences</b>	<b>103</b>	<b>92.8%</b>	<b>8</b>	<b>7.2%</b>
<b>J Public Order Offences</b>	<b>262</b>	<b>85.3%</b>	<b>45</b>	<b>14.7%</b>
<b>K All Other Offences (excluding Motoring)</b>	<b>90</b>	<b>87.4%</b>	<b>13</b>	<b>12.6%</b>
<b>L Motoring Offences</b>	<b>766</b>	<b>91.0%</b>	<b>76</b>	<b>9.0%</b>
<b>Admin Finalisations</b>	<b>0</b>	<b>0.0%</b>	<b>43</b>	<b>100.0%</b>
<b>TOTAL</b>	<b>2,222</b>	<b>86.9%</b>	<b>335</b>	<b>13.1%</b>