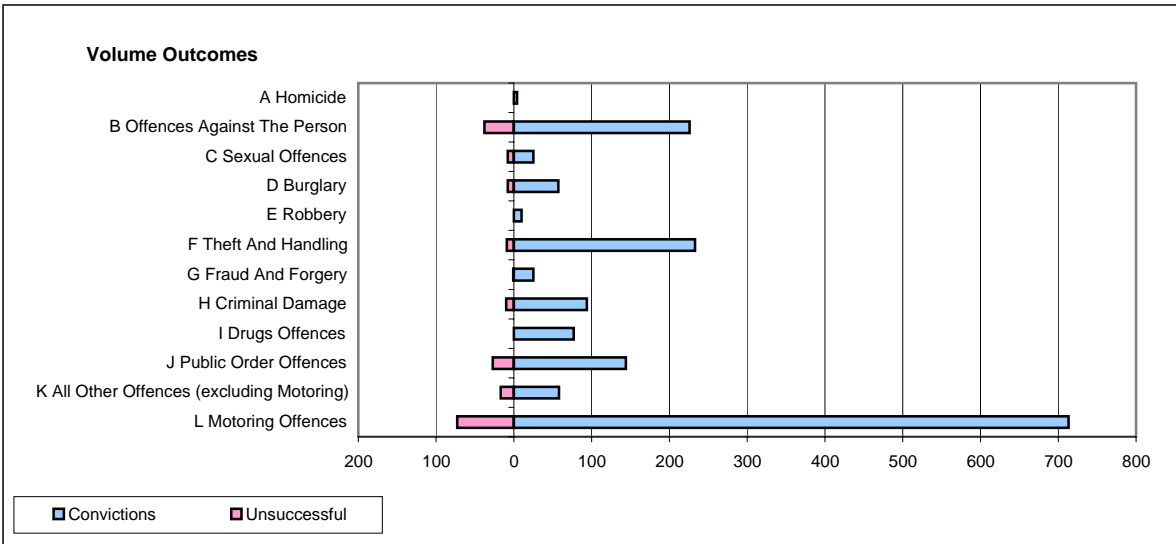
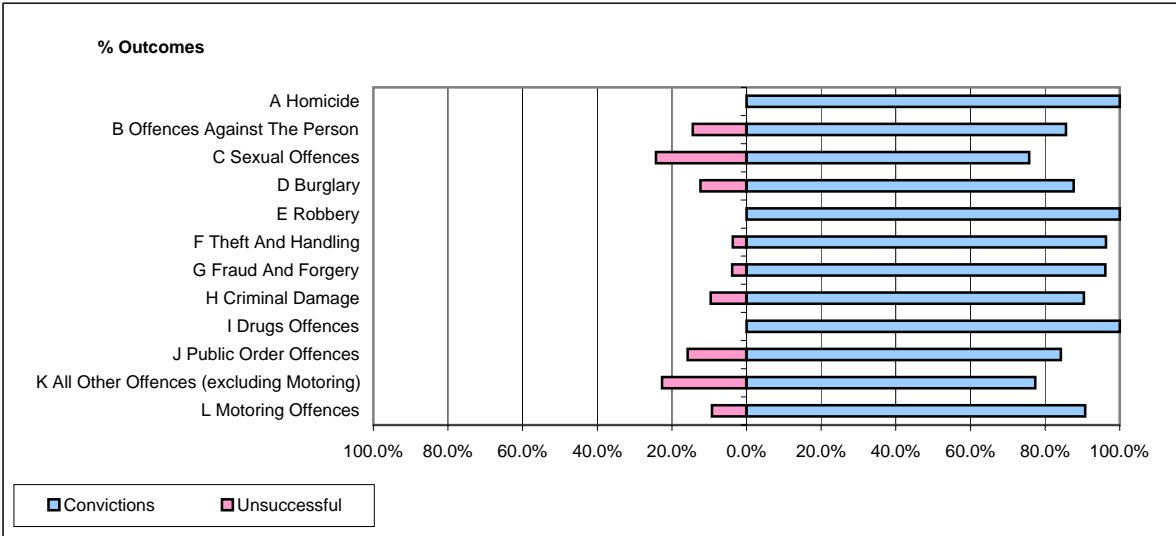


**CPS OUTCOMES BY PRINCIPAL OFFENCE CATEGORY**

**May 2008**

**P20-Kent**



	Convictions		Unsuccessful	
	Number of Defendants	%	Number of Defendants	%
<b>A Homicide</b>	<b>4</b>	<b>100.0%</b>	<b>0</b>	<b>0.0%</b>
<b>B Offences Against The Person</b>	<b>226</b>	<b>85.6%</b>	<b>38</b>	<b>14.4%</b>
<b>C Sexual Offences</b>	<b>25</b>	<b>75.8%</b>	<b>8</b>	<b>24.2%</b>
<b>D Burglary</b>	<b>57</b>	<b>87.7%</b>	<b>8</b>	<b>12.3%</b>
<b>E Robbery</b>	<b>10</b>	<b>100.0%</b>	<b>0</b>	<b>0.0%</b>
<b>F Theft And Handling</b>	<b>233</b>	<b>96.3%</b>	<b>9</b>	<b>3.7%</b>
<b>G Fraud And Forgery</b>	<b>25</b>	<b>96.2%</b>	<b>1</b>	<b>3.8%</b>
<b>H Criminal Damage</b>	<b>94</b>	<b>90.4%</b>	<b>10</b>	<b>9.6%</b>
<b>I Drugs Offences</b>	<b>77</b>	<b>100.0%</b>	<b>0</b>	<b>0.0%</b>
<b>J Public Order Offences</b>	<b>144</b>	<b>84.2%</b>	<b>27</b>	<b>15.8%</b>
<b>K All Other Offences (excluding Motoring)</b>	<b>58</b>	<b>77.3%</b>	<b>17</b>	<b>22.7%</b>
<b>L Motoring Offences</b>	<b>713</b>	<b>90.7%</b>	<b>73</b>	<b>9.3%</b>
<b>Admin Finalisations</b>	<b>0</b>	<b>0.0%</b>	<b>31</b>	<b>100.0%</b>
<b>TOTAL</b>	<b>1,666</b>	<b>88.2%</b>	<b>222</b>	<b>11.8%</b>