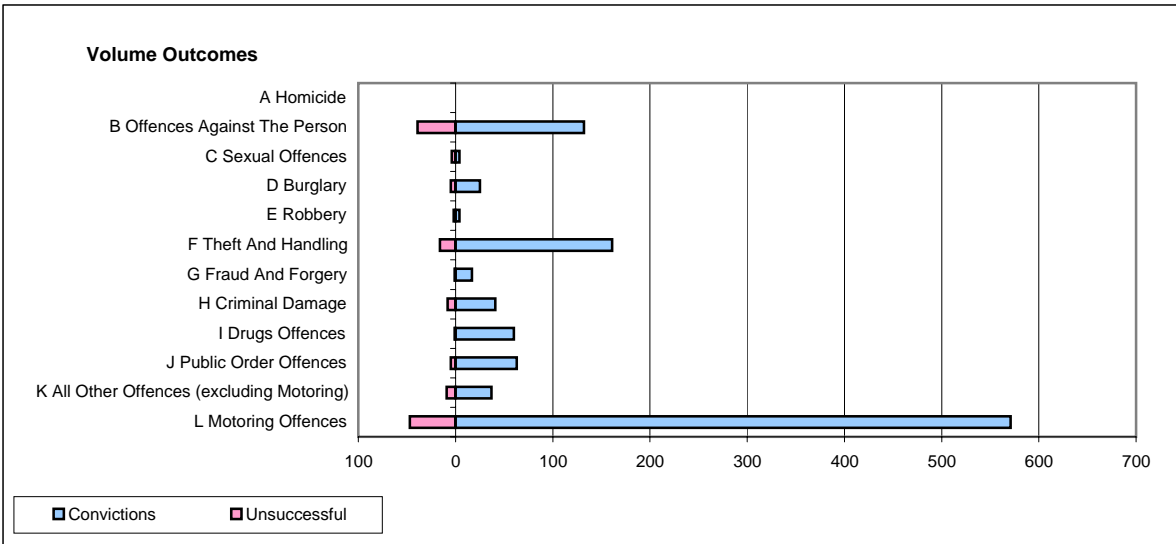
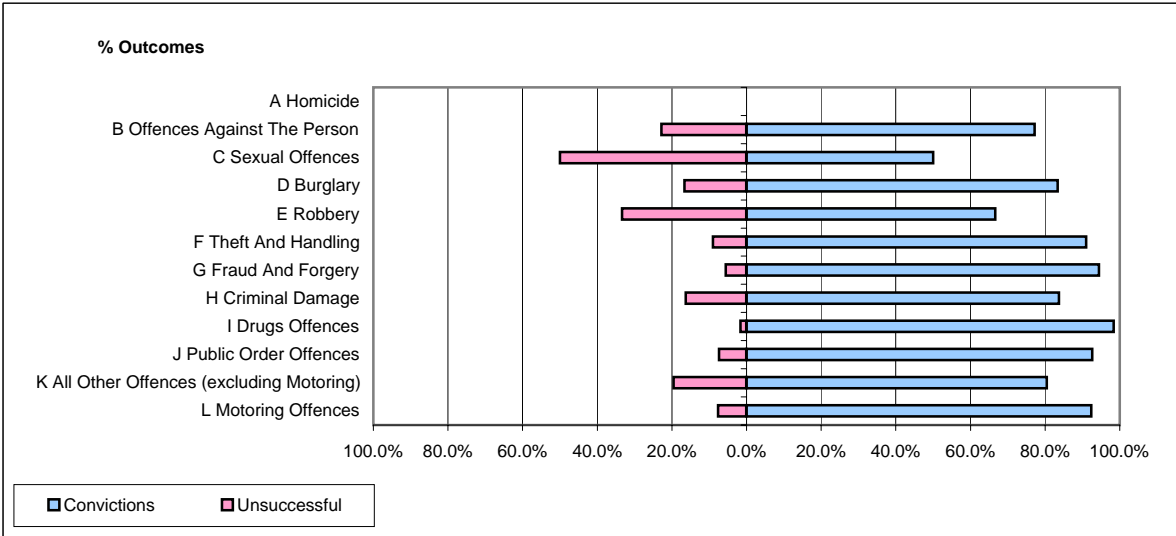


**CPS OUTCOMES BY PRINCIPAL OFFENCE CATEGORY**

**May 2008**

**P18-Hertfordshire**



	Convictions		Unsuccessful	
	Number of Defendants	%	Number of Defendants	%
<b>A Homicide</b>	<b>0</b>	<b>0</b>	<b>0</b>	<b>0</b>
<b>B Offences Against The Person</b>	<b>132</b>	<b>77.2%</b>	<b>39</b>	<b>22.8%</b>
<b>C Sexual Offences</b>	<b>4</b>	<b>50.0%</b>	<b>4</b>	<b>50.0%</b>
<b>D Burglary</b>	<b>25</b>	<b>83.3%</b>	<b>5</b>	<b>16.7%</b>
<b>E Robbery</b>	<b>4</b>	<b>66.7%</b>	<b>2</b>	<b>33.3%</b>
<b>F Theft And Handling</b>	<b>161</b>	<b>91.0%</b>	<b>16</b>	<b>9.0%</b>
<b>G Fraud And Forgery</b>	<b>17</b>	<b>94.4%</b>	<b>1</b>	<b>5.6%</b>
<b>H Criminal Damage</b>	<b>41</b>	<b>83.7%</b>	<b>8</b>	<b>16.3%</b>
<b>I Drugs Offences</b>	<b>60</b>	<b>98.4%</b>	<b>1</b>	<b>1.6%</b>
<b>J Public Order Offences</b>	<b>63</b>	<b>92.6%</b>	<b>5</b>	<b>7.4%</b>
<b>K All Other Offences (excluding Motoring)</b>	<b>37</b>	<b>80.4%</b>	<b>9</b>	<b>19.6%</b>
<b>L Motoring Offences</b>	<b>571</b>	<b>92.4%</b>	<b>47</b>	<b>7.6%</b>
<b>Admin Finalisations</b>	<b>0</b>	<b>0.0%</b>	<b>29</b>	<b>100.0%</b>
<b>TOTAL</b>	<b>1,115</b>	<b>87.0%</b>	<b>166</b>	<b>13.0%</b>