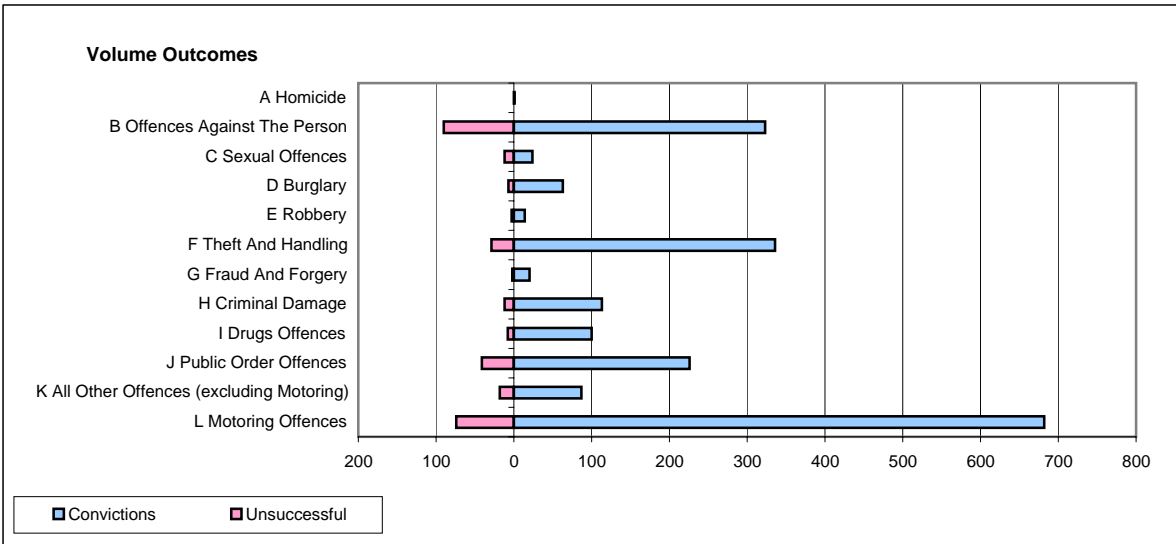
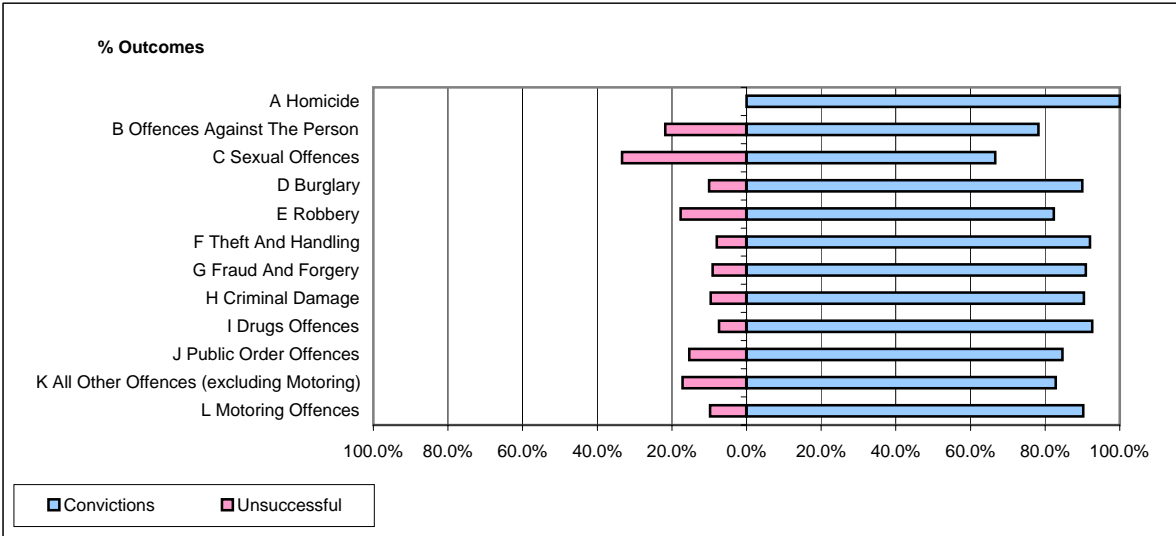


**CPS OUTCOMES BY PRINCIPAL OFFENCE CATEGORY**

**May 2008**

**P17-Hampshire**



	Convictions		Unsuccessful	
	Number of Defendants	%	Number of Defendants	%
<b>A Homicide</b>	<b>1</b>	<b>100.0%</b>	<b>0</b>	<b>0.0%</b>
<b>B Offences Against The Person</b>	<b>323</b>	<b>78.2%</b>	<b>90</b>	<b>21.8%</b>
<b>C Sexual Offences</b>	<b>24</b>	<b>66.7%</b>	<b>12</b>	<b>33.3%</b>
<b>D Burglary</b>	<b>63</b>	<b>90.0%</b>	<b>7</b>	<b>10.0%</b>
<b>E Robbery</b>	<b>14</b>	<b>82.4%</b>	<b>3</b>	<b>17.6%</b>
<b>F Theft And Handling</b>	<b>336</b>	<b>92.1%</b>	<b>29</b>	<b>7.9%</b>
<b>G Fraud And Forgery</b>	<b>20</b>	<b>90.9%</b>	<b>2</b>	<b>9.1%</b>
<b>H Criminal Damage</b>	<b>113</b>	<b>90.4%</b>	<b>12</b>	<b>9.6%</b>
<b>I Drugs Offences</b>	<b>100</b>	<b>92.6%</b>	<b>8</b>	<b>7.4%</b>
<b>J Public Order Offences</b>	<b>226</b>	<b>84.6%</b>	<b>41</b>	<b>15.4%</b>
<b>K All Other Offences (excluding Motoring)</b>	<b>87</b>	<b>82.9%</b>	<b>18</b>	<b>17.1%</b>
<b>L Motoring Offences</b>	<b>682</b>	<b>90.2%</b>	<b>74</b>	<b>9.8%</b>
<b>Admin Finalisations</b>	<b>0</b>	<b>0.0%</b>	<b>24</b>	<b>100.0%</b>
<b>TOTAL</b>	<b>1,989</b>	<b>86.1%</b>	<b>320</b>	<b>13.9%</b>