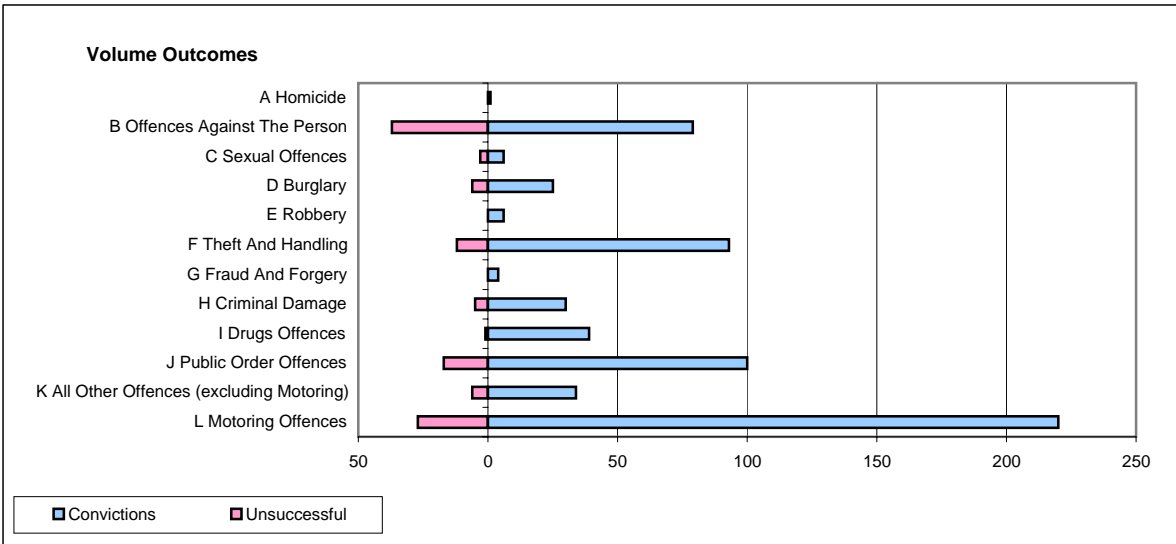
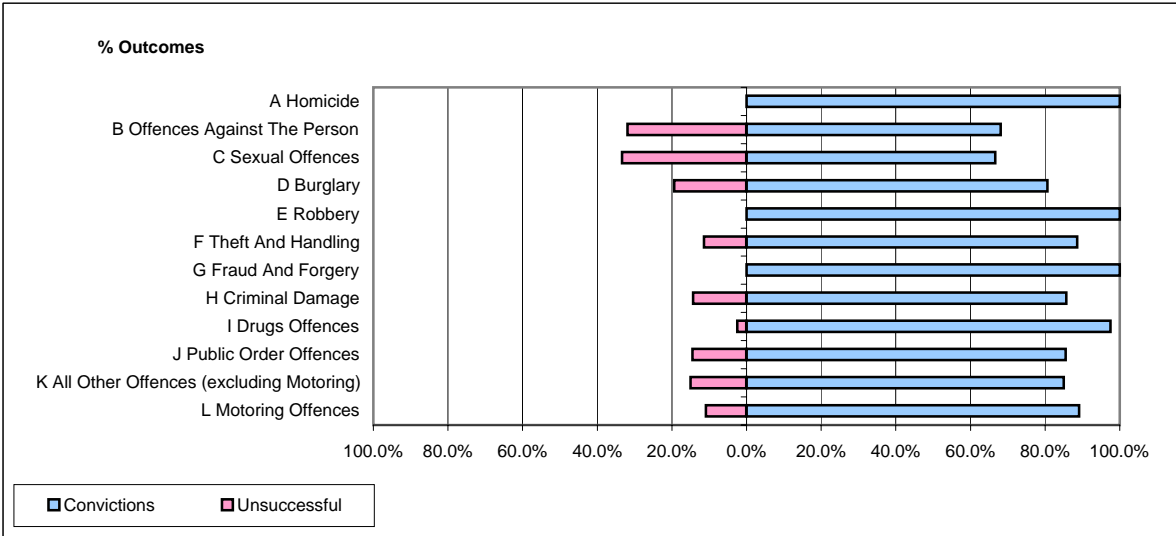


CPS OUTCOMES BY PRINCIPAL OFFENCE CATEGORY

May 2008

P16-Gwent



	Convictions		Unsuccessful	
	Number of Defendants	%	Number of Defendants	%
A Homicide	1	100.0%	0	0.0%
B Offences Against The Person	79	68.1%	37	31.9%
C Sexual Offences	6	66.7%	3	33.3%
D Burglary	25	80.6%	6	19.4%
E Robbery	6	100.0%	0	0.0%
F Theft And Handling	93	88.6%	12	11.4%
G Fraud And Forgery	4	100.0%	0	0.0%
H Criminal Damage	30	85.7%	5	14.3%
I Drugs Offences	39	97.5%	1	2.5%
J Public Order Offences	100	85.5%	17	14.5%
K All Other Offences (excluding Motoring)	34	85.0%	6	15.0%
L Motoring Offences	220	89.1%	27	10.9%
Admin Finalisations	0	0.0%	13	100.0%
TOTAL	637	83.4%	127	16.6%