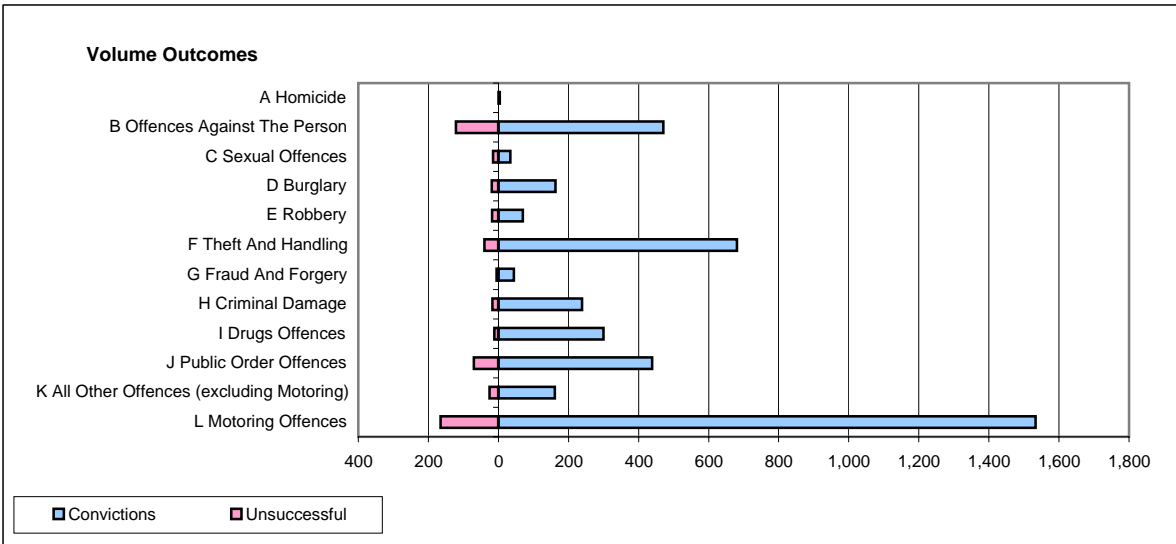
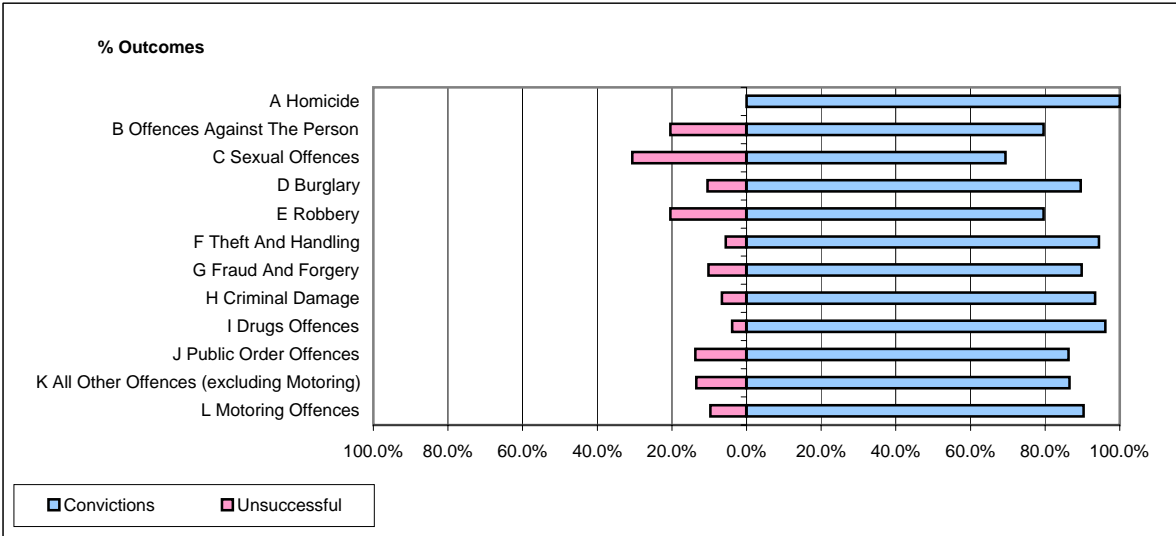


CPS OUTCOMES BY PRINCIPAL OFFENCE CATEGORY

May 2008

P15-GreaterManchester



	Convictions		Unsuccessful	
	Number of Defendants	%	Number of Defendants	%
A Homicide	4	100.0%	0	0.0%
B Offences Against The Person	471	79.6%	121	20.4%
C Sexual Offences	34	69.4%	15	30.6%
D Burglary	163	89.6%	19	10.4%
E Robbery	70	79.5%	18	20.5%
F Theft And Handling	681	94.5%	40	5.5%
G Fraud And Forgery	44	89.8%	5	10.2%
H Criminal Damage	239	93.4%	17	6.6%
I Drugs Offences	300	96.2%	12	3.8%
J Public Order Offences	439	86.2%	70	13.8%
K All Other Offences (excluding Motoring)	161	86.6%	25	13.4%
L Motoring Offences	1,533	90.3%	165	9.7%
Admin Finalisations	0	0.0%	71	100.0%
TOTAL	4,139	87.7%	578	12.3%