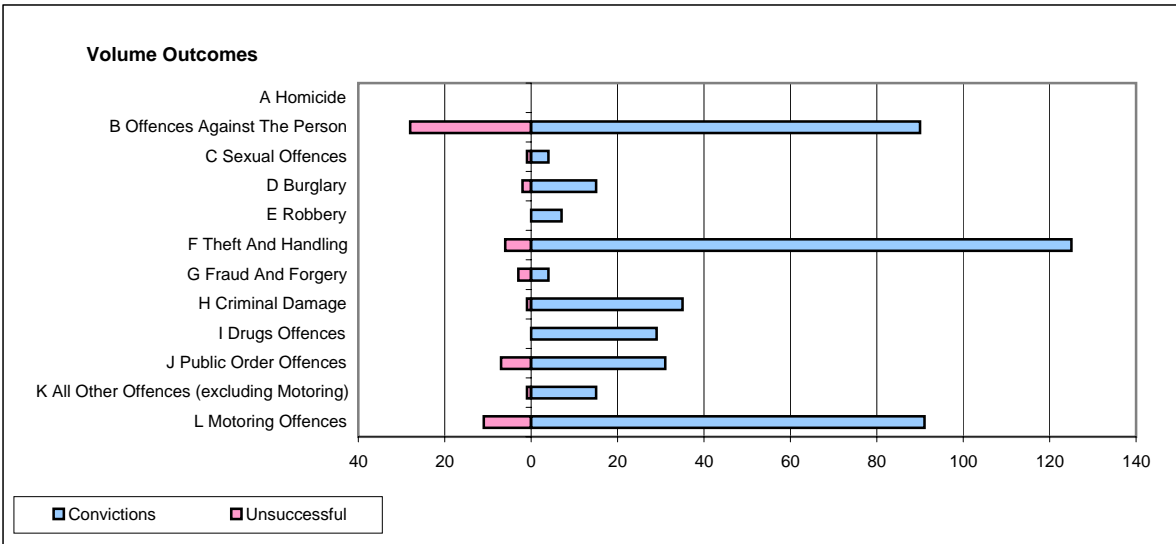
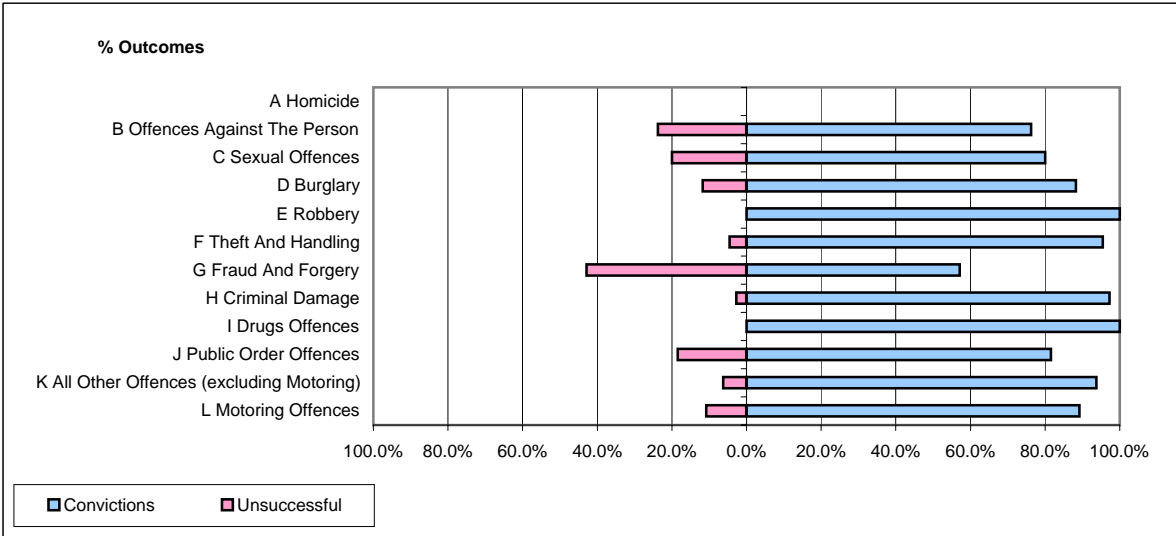


**CPS OUTCOMES BY PRINCIPAL OFFENCE CATEGORY**

**May 2008**

**P14-Gloucestershire**



	Convictions		Unsuccessful	
	Number of Defendants	%	Number of Defendants	%
<b>A Homicide</b>	<b>0</b>	<b>0</b>	<b>0</b>	<b>0</b>
<b>B Offences Against The Person</b>	<b>90</b>	<b>76.3%</b>	<b>28</b>	<b>23.7%</b>
<b>C Sexual Offences</b>	<b>4</b>	<b>80.0%</b>	<b>1</b>	<b>20.0%</b>
<b>D Burglary</b>	<b>15</b>	<b>88.2%</b>	<b>2</b>	<b>11.8%</b>
<b>E Robbery</b>	<b>7</b>	<b>100.0%</b>	<b>0</b>	<b>0.0%</b>
<b>F Theft And Handling</b>	<b>125</b>	<b>95.4%</b>	<b>6</b>	<b>4.6%</b>
<b>G Fraud And Forgery</b>	<b>4</b>	<b>57.1%</b>	<b>3</b>	<b>42.9%</b>
<b>H Criminal Damage</b>	<b>35</b>	<b>97.2%</b>	<b>1</b>	<b>2.8%</b>
<b>I Drugs Offences</b>	<b>29</b>	<b>100.0%</b>	<b>0</b>	<b>0.0%</b>
<b>J Public Order Offences</b>	<b>31</b>	<b>81.6%</b>	<b>7</b>	<b>18.4%</b>
<b>K All Other Offences (excluding Motoring)</b>	<b>15</b>	<b>93.8%</b>	<b>1</b>	<b>6.3%</b>
<b>L Motoring Offences</b>	<b>91</b>	<b>89.2%</b>	<b>11</b>	<b>10.8%</b>
<b>Admin Finalisations</b>	<b>0</b>	<b>0.0%</b>	<b>6</b>	<b>100.0%</b>
<b>TOTAL</b>	<b>446</b>	<b>87.1%</b>	<b>66</b>	<b>12.9%</b>