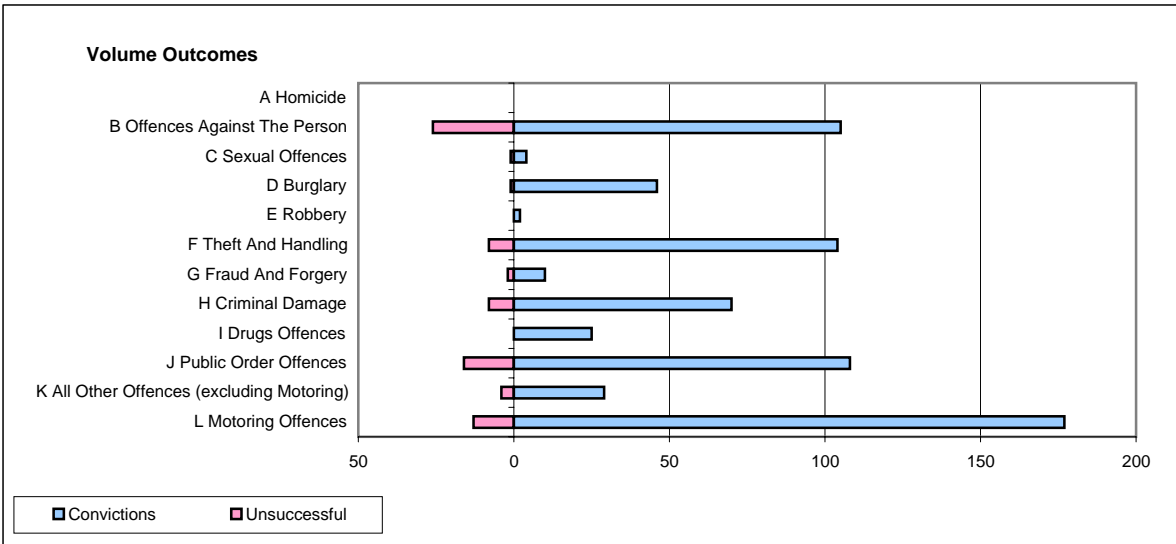
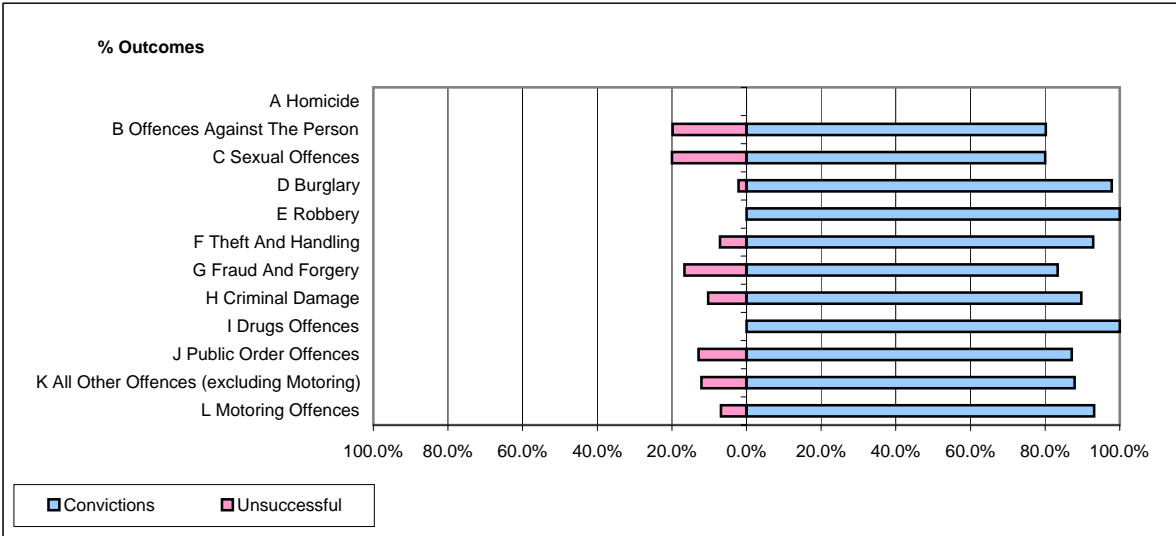


CPS OUTCOMES BY PRINCIPAL OFFENCE CATEGORY

May 2008

P11-Durham



	Convictions		Unsuccessful	
	Number of Defendants	%	Number of Defendants	%
A Homicide	0	0	0	0
B Offences Against The Person	105	80.2%	26	19.8%
C Sexual Offences	4	80.0%	1	20.0%
D Burglary	46	97.9%	1	2.1%
E Robbery	2	100.0%	0	0.0%
F Theft And Handling	104	92.9%	8	7.1%
G Fraud And Forgery	10	83.3%	2	16.7%
H Criminal Damage	70	89.7%	8	10.3%
I Drugs Offences	25	100.0%	0	0.0%
J Public Order Offences	108	87.1%	16	12.9%
K All Other Offences (excluding Motoring)	29	87.9%	4	12.1%
L Motoring Offences	177	93.2%	13	6.8%
Admin Finalisations	0	0.0%	9	100.0%
TOTAL	680	88.5%	88	11.5%