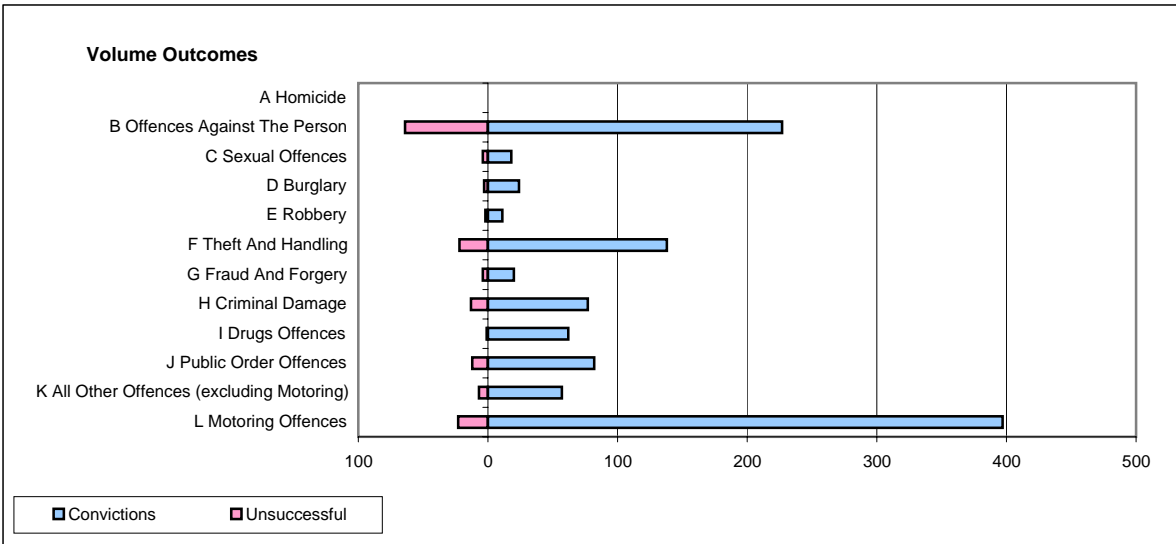
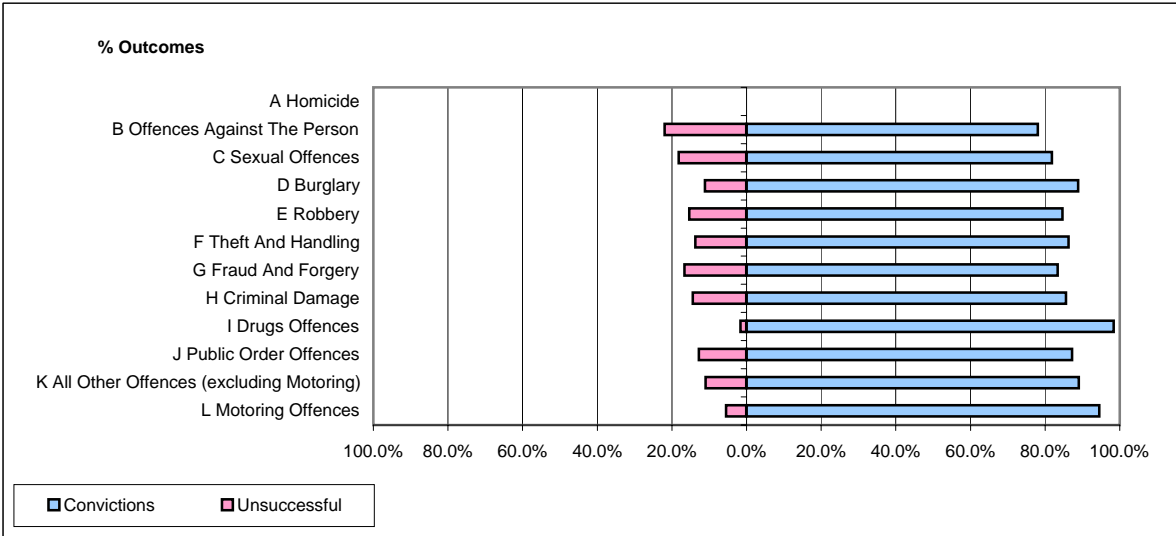


CPS OUTCOMES BY PRINCIPAL OFFENCE CATEGORY

May 2008

P08-Derbyshire



	Convictions		Unsuccessful	
	Number of Defendants	%	Number of Defendants	%
A Homicide	0	0	0	0
B Offences Against The Person	227	78.0%	64	22.0%
C Sexual Offences	18	81.8%	4	18.2%
D Burglary	24	88.9%	3	11.1%
E Robbery	11	84.6%	2	15.4%
F Theft And Handling	138	86.3%	22	13.8%
G Fraud And Forgery	20	83.3%	4	16.7%
H Criminal Damage	77	85.6%	13	14.4%
I Drugs Offences	62	98.4%	1	1.6%
J Public Order Offences	82	87.2%	12	12.8%
K All Other Offences (excluding Motoring)	57	89.1%	7	10.9%
L Motoring Offences	397	94.5%	23	5.5%
Admin Finalisations	0	0.0%	10	100.0%
TOTAL	1,113	87.1%	165	12.9%