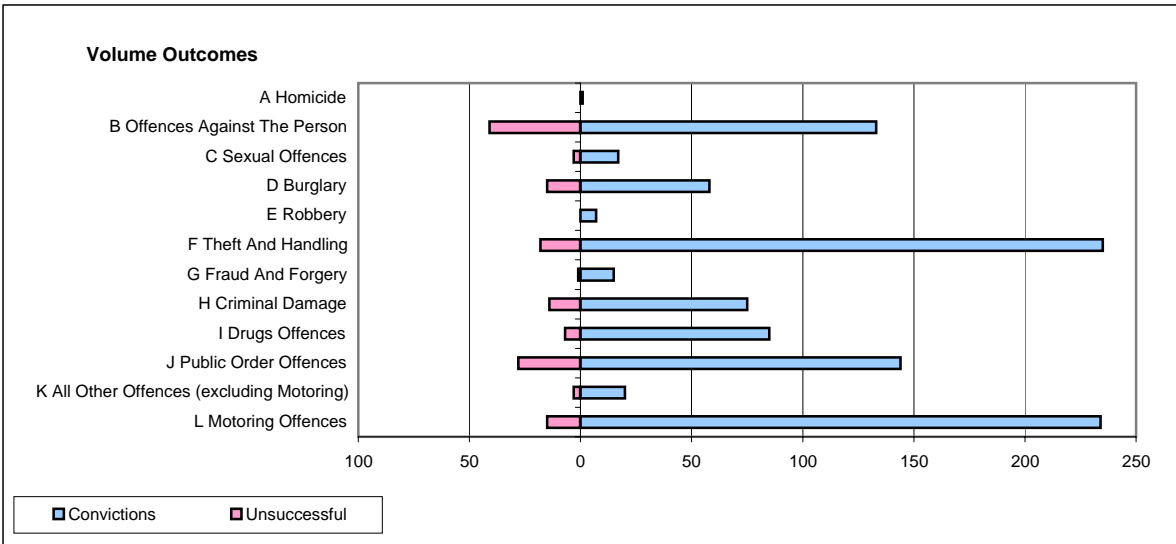
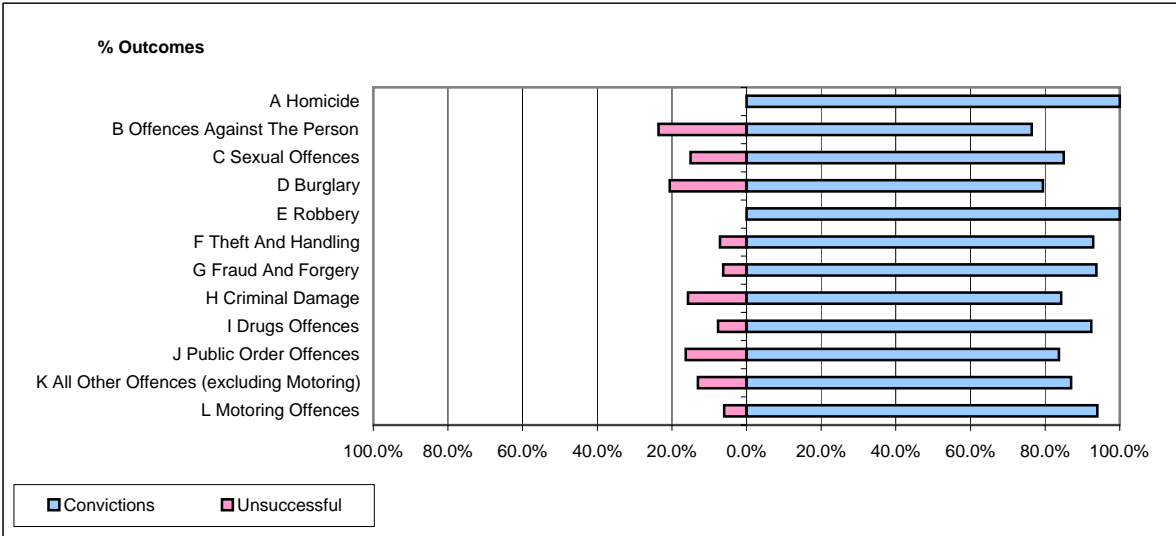


**CPS OUTCOMES BY PRINCIPAL OFFENCE CATEGORY**

**May 2008**

**P06-Cleveland**



	Convictions		Unsuccessful	
	Number of Defendants	%	Number of Defendants	%
<b>A Homicide</b>	<b>1</b>	<b>100.0%</b>	<b>0</b>	<b>0.0%</b>
<b>B Offences Against The Person</b>	<b>133</b>	<b>76.4%</b>	<b>41</b>	<b>23.6%</b>
<b>C Sexual Offences</b>	<b>17</b>	<b>85.0%</b>	<b>3</b>	<b>15.0%</b>
<b>D Burglary</b>	<b>58</b>	<b>79.5%</b>	<b>15</b>	<b>20.5%</b>
<b>E Robbery</b>	<b>7</b>	<b>100.0%</b>	<b>0</b>	<b>0.0%</b>
<b>F Theft And Handling</b>	<b>235</b>	<b>92.9%</b>	<b>18</b>	<b>7.1%</b>
<b>G Fraud And Forgery</b>	<b>15</b>	<b>93.8%</b>	<b>1</b>	<b>6.3%</b>
<b>H Criminal Damage</b>	<b>75</b>	<b>84.3%</b>	<b>14</b>	<b>15.7%</b>
<b>I Drugs Offences</b>	<b>85</b>	<b>92.4%</b>	<b>7</b>	<b>7.6%</b>
<b>J Public Order Offences</b>	<b>144</b>	<b>83.7%</b>	<b>28</b>	<b>16.3%</b>
<b>K All Other Offences (excluding Motoring)</b>	<b>20</b>	<b>87.0%</b>	<b>3</b>	<b>13.0%</b>
<b>L Motoring Offences</b>	<b>234</b>	<b>94.0%</b>	<b>15</b>	<b>6.0%</b>
<b>Admin Finalisations</b>	<b>0</b>	<b>0.0%</b>	<b>14</b>	<b>100.0%</b>
<b>TOTAL</b>	<b>1,024</b>	<b>86.6%</b>	<b>159</b>	<b>13.4%</b>