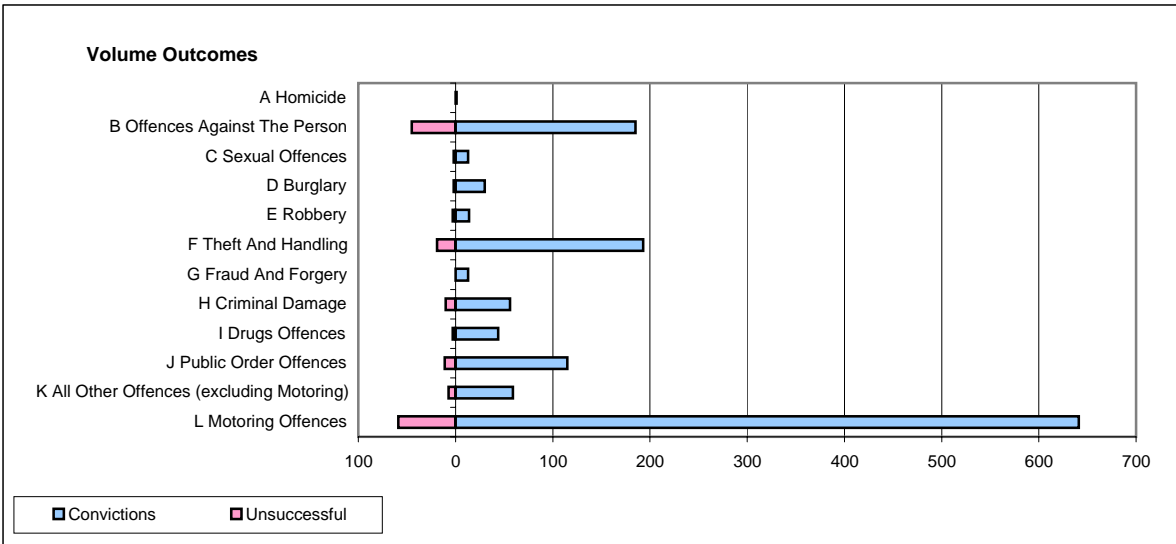
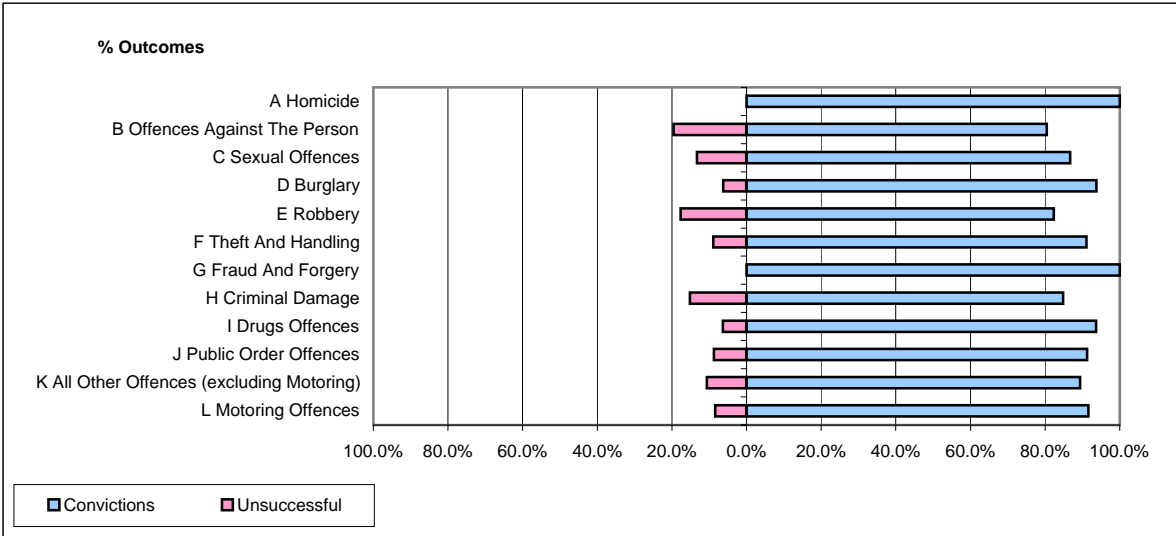


**CPS OUTCOMES BY PRINCIPAL OFFENCE CATEGORY**

**May 2008**

**P04-Cheshire**



	Convictions		Unsuccessful	
	Number of Defendants	%	Number of Defendants	%
<b>A Homicide</b>	<b>1</b>	<b>100.0%</b>	<b>0</b>	<b>0.0%</b>
<b>B Offences Against The Person</b>	<b>185</b>	<b>80.4%</b>	<b>45</b>	<b>19.6%</b>
<b>C Sexual Offences</b>	<b>13</b>	<b>86.7%</b>	<b>2</b>	<b>13.3%</b>
<b>D Burglary</b>	<b>30</b>	<b>93.8%</b>	<b>2</b>	<b>6.3%</b>
<b>E Robbery</b>	<b>14</b>	<b>82.4%</b>	<b>3</b>	<b>17.6%</b>
<b>F Theft And Handling</b>	<b>193</b>	<b>91.0%</b>	<b>19</b>	<b>9.0%</b>
<b>G Fraud And Forgery</b>	<b>13</b>	<b>100.0%</b>	<b>0</b>	<b>0.0%</b>
<b>H Criminal Damage</b>	<b>56</b>	<b>84.8%</b>	<b>10</b>	<b>15.2%</b>
<b>I Drugs Offences</b>	<b>44</b>	<b>93.6%</b>	<b>3</b>	<b>6.4%</b>
<b>J Public Order Offences</b>	<b>115</b>	<b>91.3%</b>	<b>11</b>	<b>8.7%</b>
<b>K All Other Offences (excluding Motoring)</b>	<b>59</b>	<b>89.4%</b>	<b>7</b>	<b>10.6%</b>
<b>L Motoring Offences</b>	<b>641</b>	<b>91.6%</b>	<b>59</b>	<b>8.4%</b>
<b>Admin Finalisations</b>	<b>0</b>	<b>0.0%</b>	<b>10</b>	<b>100.0%</b>
<b>TOTAL</b>	<b>1,364</b>	<b>88.9%</b>	<b>171</b>	<b>11.1%</b>