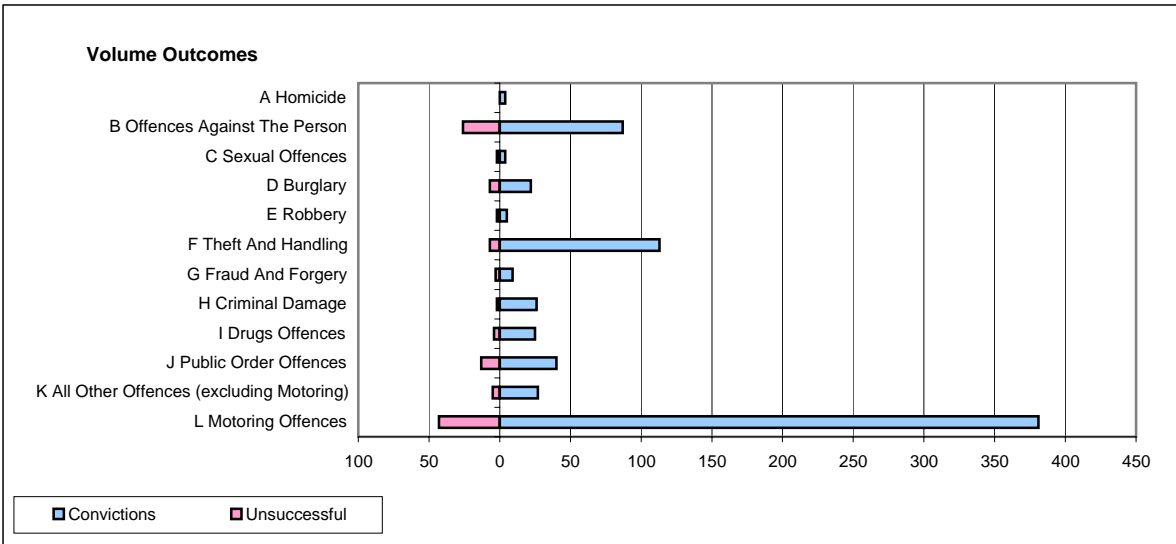
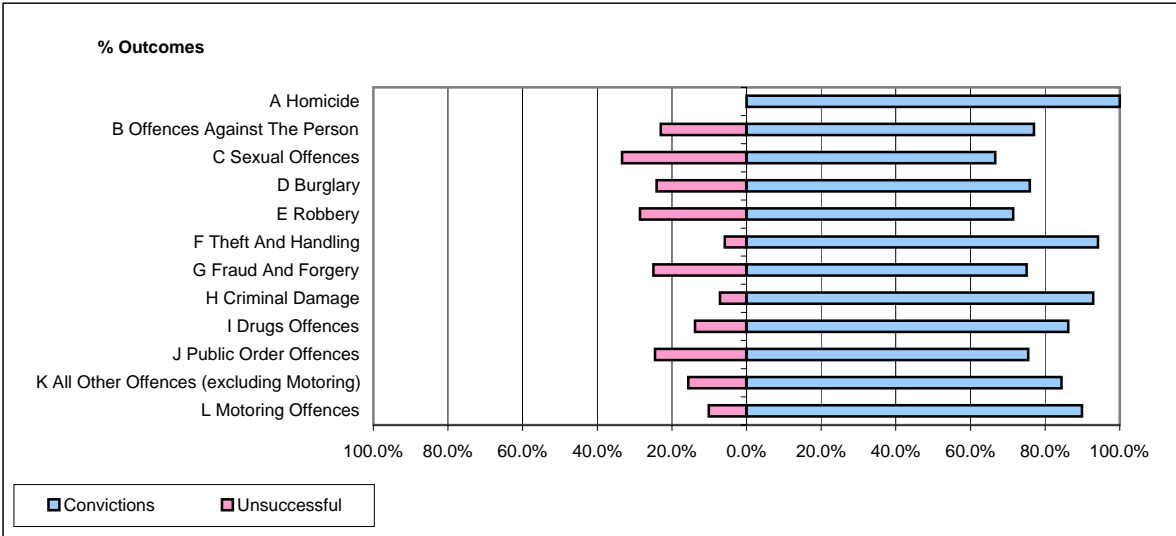


**CPS OUTCOMES BY PRINCIPAL OFFENCE CATEGORY**

**May 2008**

**P02-Bedfordshire**



	Convictions		Unsuccessful	
	Number of Defendants	%	Number of Defendants	%
<b>A Homicide</b>	<b>4</b>	<b>100.0%</b>	<b>0</b>	<b>0.0%</b>
<b>B Offences Against The Person</b>	<b>87</b>	<b>77.0%</b>	<b>26</b>	<b>23.0%</b>
<b>C Sexual Offences</b>	<b>4</b>	<b>66.7%</b>	<b>2</b>	<b>33.3%</b>
<b>D Burglary</b>	<b>22</b>	<b>75.9%</b>	<b>7</b>	<b>24.1%</b>
<b>E Robbery</b>	<b>5</b>	<b>71.4%</b>	<b>2</b>	<b>28.6%</b>
<b>F Theft And Handling</b>	<b>113</b>	<b>94.2%</b>	<b>7</b>	<b>5.8%</b>
<b>G Fraud And Forgery</b>	<b>9</b>	<b>75.0%</b>	<b>3</b>	<b>25.0%</b>
<b>H Criminal Damage</b>	<b>26</b>	<b>92.9%</b>	<b>2</b>	<b>7.1%</b>
<b>I Drugs Offences</b>	<b>25</b>	<b>86.2%</b>	<b>4</b>	<b>13.8%</b>
<b>J Public Order Offences</b>	<b>40</b>	<b>75.5%</b>	<b>13</b>	<b>24.5%</b>
<b>K All Other Offences (excluding Motoring)</b>	<b>27</b>	<b>84.4%</b>	<b>5</b>	<b>15.6%</b>
<b>L Motoring Offences</b>	<b>381</b>	<b>89.9%</b>	<b>43</b>	<b>10.1%</b>
<b>Admin Finalisations</b>	<b>0</b>	<b>0.0%</b>	<b>17</b>	<b>100.0%</b>
<b>TOTAL</b>	<b>743</b>	<b>85.0%</b>	<b>131</b>	<b>15.0%</b>