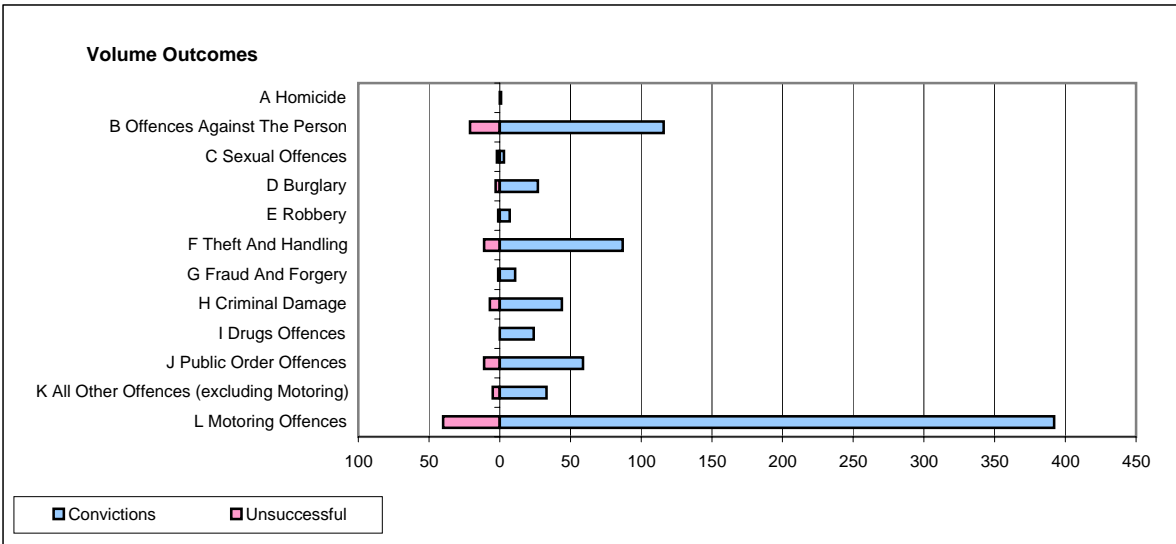
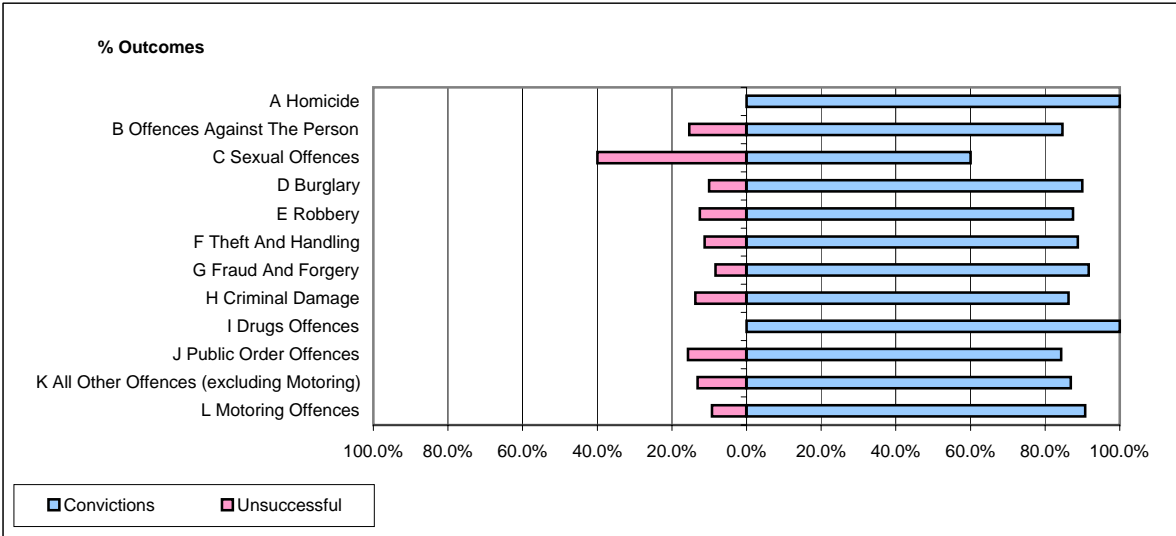


CPS OUTCOMES BY PRINCIPAL OFFENCE CATEGORY

April 2008

P43-Wiltshire



	Convictions		Unsuccessful	
	Number of Defendants	%	Number of Defendants	%
A Homicide	1	100.0%	0	0.0%
B Offences Against The Person	116	84.7%	21	15.3%
C Sexual Offences	3	60.0%	2	40.0%
D Burglary	27	90.0%	3	10.0%
E Robbery	7	87.5%	1	12.5%
F Theft And Handling	87	88.8%	11	11.2%
G Fraud And Forgery	11	91.7%	1	8.3%
H Criminal Damage	44	86.3%	7	13.7%
I Drugs Offences	24	100.0%	0	0.0%
J Public Order Offences	59	84.3%	11	15.7%
K All Other Offences (excluding Motoring)	33	86.8%	5	13.2%
L Motoring Offences	392	90.7%	40	9.3%
Admin Finalisations	0	0.0%	14	100.0%
TOTAL	804	87.4%	116	12.6%