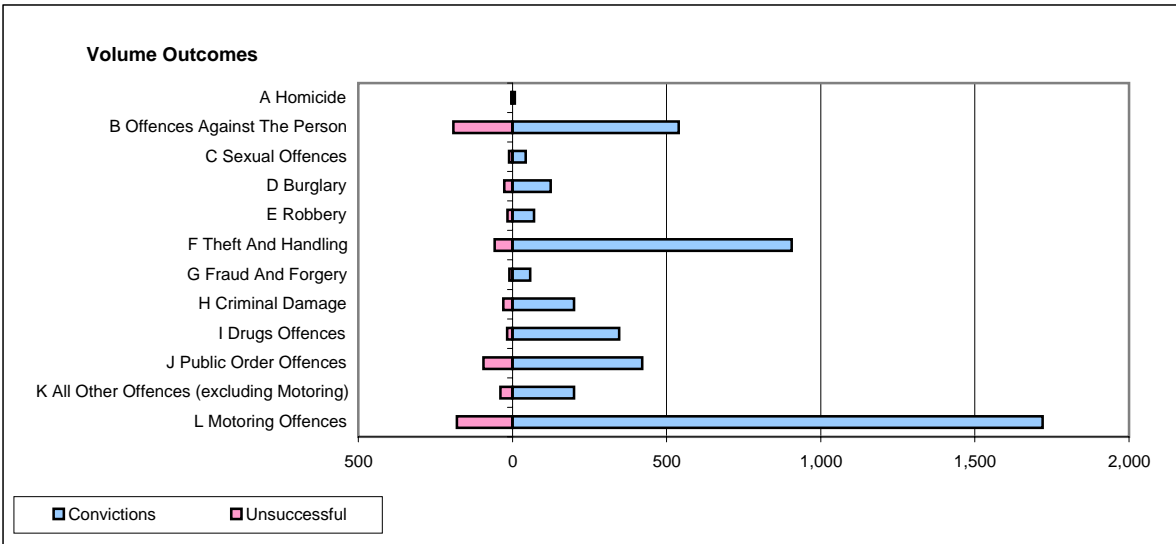
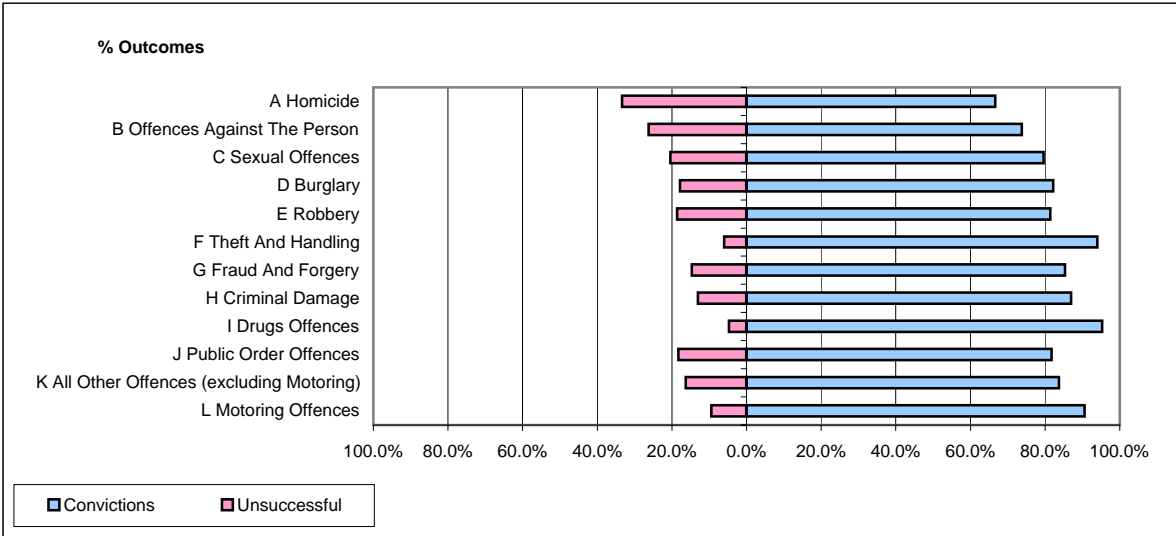


CPS OUTCOMES BY PRINCIPAL OFFENCE CATEGORY

April 2008

P41-WestMidlands



	Convictions		Unsuccessful	
	Number of Defendants	%	Number of Defendants	%
A Homicide	8	66.7%	4	33.3%
B Offences Against The Person	539	73.7%	192	26.3%
C Sexual Offences	43	79.6%	11	20.4%
D Burglary	124	82.1%	27	17.9%
E Robbery	70	81.4%	16	18.6%
F Theft And Handling	906	94.0%	58	6.0%
G Fraud And Forgery	58	85.3%	10	14.7%
H Criminal Damage	200	87.0%	30	13.0%
I Drugs Offences	346	95.3%	17	4.7%
J Public Order Offences	421	81.7%	94	18.3%
K All Other Offences (excluding Motoring)	200	83.7%	39	16.3%
L Motoring Offences	1,720	90.5%	180	9.5%
Admin Finalisations	0	0.0%	42	100.0%
TOTAL	4,635	86.6%	720	13.4%