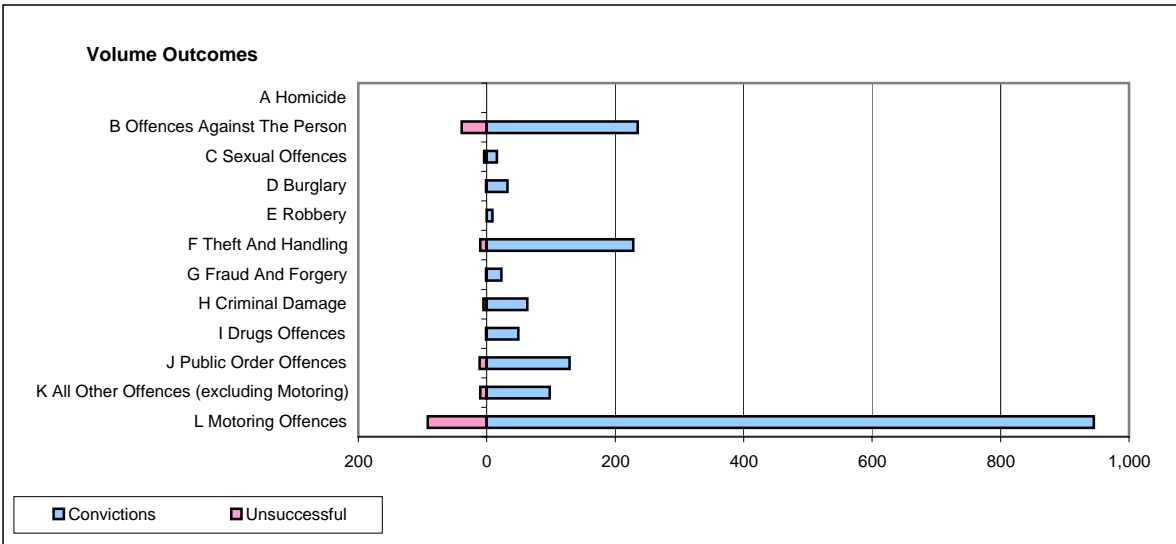
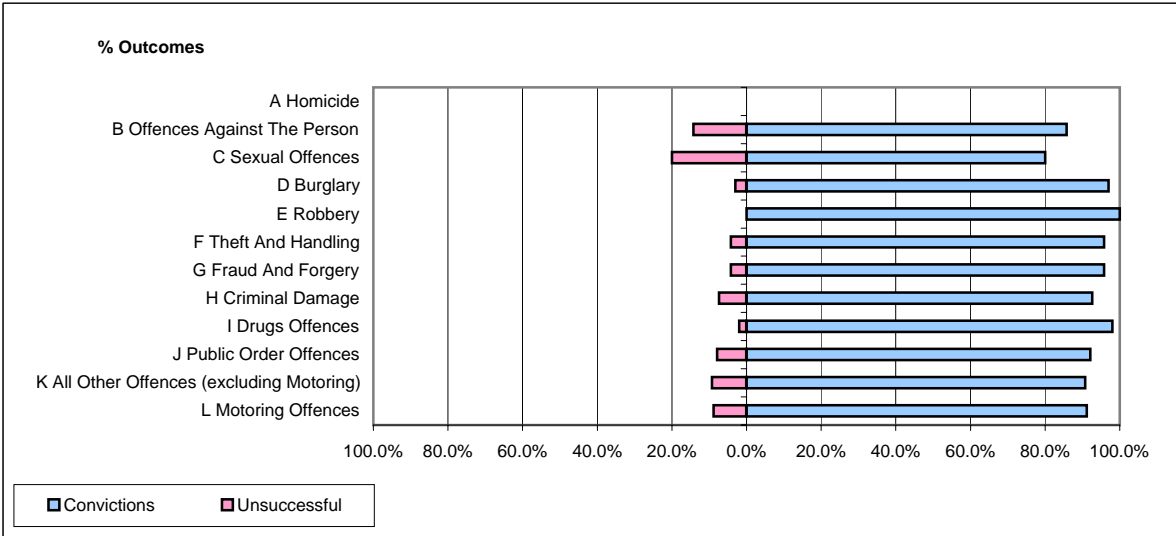


**CPS OUTCOMES BY PRINCIPAL OFFENCE CATEGORY**

**April 2008**

**P40-WestMercia**



	Convictions		Unsuccessful	
	Number of Defendants	%	Number of Defendants	%
<b>A Homicide</b>	<b>0</b>	<b>0</b>	<b>0</b>	<b>0</b>
<b>B Offences Against The Person</b>	<b>235</b>	<b>85.8%</b>	<b>39</b>	<b>14.2%</b>
<b>C Sexual Offences</b>	<b>16</b>	<b>80.0%</b>	<b>4</b>	<b>20.0%</b>
<b>D Burglary</b>	<b>32</b>	<b>97.0%</b>	<b>1</b>	<b>3.0%</b>
<b>E Robbery</b>	<b>9</b>	<b>100.0%</b>	<b>0</b>	<b>0.0%</b>
<b>F Theft And Handling</b>	<b>228</b>	<b>95.8%</b>	<b>10</b>	<b>4.2%</b>
<b>G Fraud And Forgery</b>	<b>23</b>	<b>95.8%</b>	<b>1</b>	<b>4.2%</b>
<b>H Criminal Damage</b>	<b>63</b>	<b>92.6%</b>	<b>5</b>	<b>7.4%</b>
<b>I Drugs Offences</b>	<b>49</b>	<b>98.0%</b>	<b>1</b>	<b>2.0%</b>
<b>J Public Order Offences</b>	<b>129</b>	<b>92.1%</b>	<b>11</b>	<b>7.9%</b>
<b>K All Other Offences (excluding Motoring)</b>	<b>98</b>	<b>90.7%</b>	<b>10</b>	<b>9.3%</b>
<b>L Motoring Offences</b>	<b>945</b>	<b>91.1%</b>	<b>92</b>	<b>8.9%</b>
<b>Admin Finalisations</b>	<b>0</b>	<b>0.0%</b>	<b>19</b>	<b>100.0%</b>
<b>TOTAL</b>	<b>1,827</b>	<b>90.4%</b>	<b>193</b>	<b>9.6%</b>