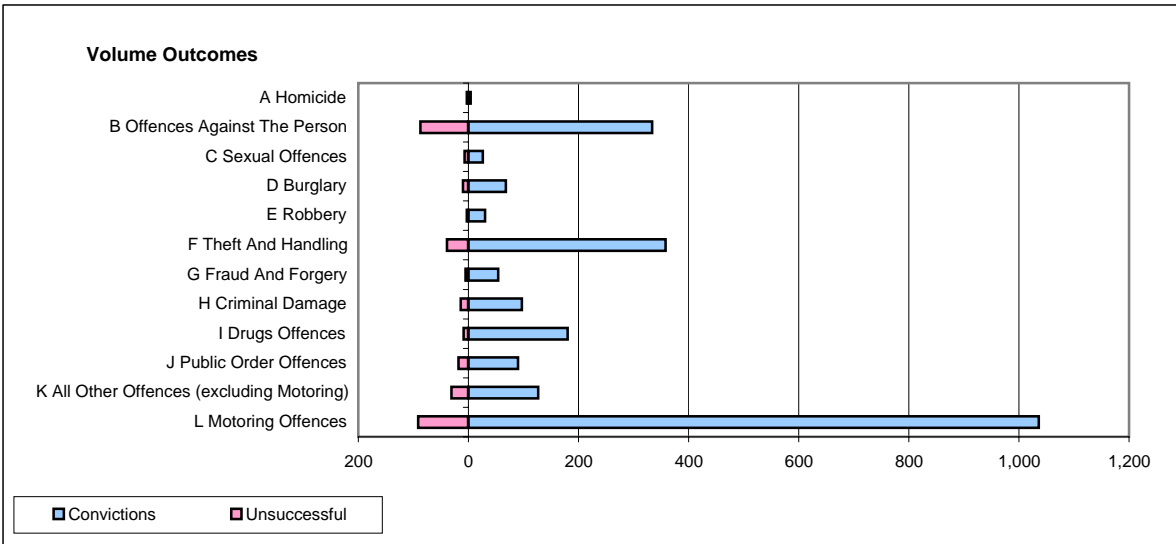
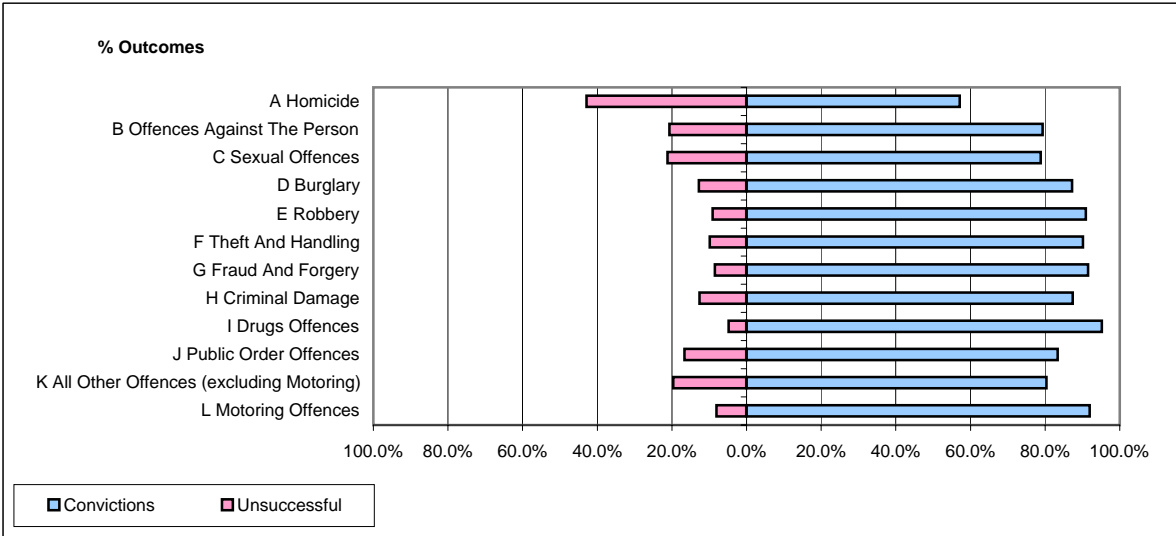


CPS OUTCOMES BY PRINCIPAL OFFENCE CATEGORY

April 2008

P38-ThamesValley



| | Convictions | | Unsuccessful | |
|--|----------------------|--------------|----------------------|---------------|
| | Number of Defendants | % | Number of Defendants | % |
| A Homicide | 4 | 57.1% | 3 | 42.9% |
| B Offences Against The Person | 334 | 79.3% | 87 | 20.7% |
| C Sexual Offences | 26 | 78.8% | 7 | 21.2% |
| D Burglary | 68 | 87.2% | 10 | 12.8% |
| E Robbery | 30 | 90.9% | 3 | 9.1% |
| F Theft And Handling | 358 | 90.2% | 39 | 9.8% |
| G Fraud And Forgery | 54 | 91.5% | 5 | 8.5% |
| H Criminal Damage | 97 | 87.4% | 14 | 12.6% |
| I Drugs Offences | 180 | 95.2% | 9 | 4.8% |
| J Public Order Offences | 90 | 83.3% | 18 | 16.7% |
| K All Other Offences (excluding Motoring) | 127 | 80.4% | 31 | 19.6% |
| L Motoring Offences | 1,036 | 91.9% | 91 | 8.1% |
| Admin Finalisations | 0 | 0.0% | 52 | 100.0% |
| TOTAL | 2,404 | 86.7% | 369 | 13.3% |