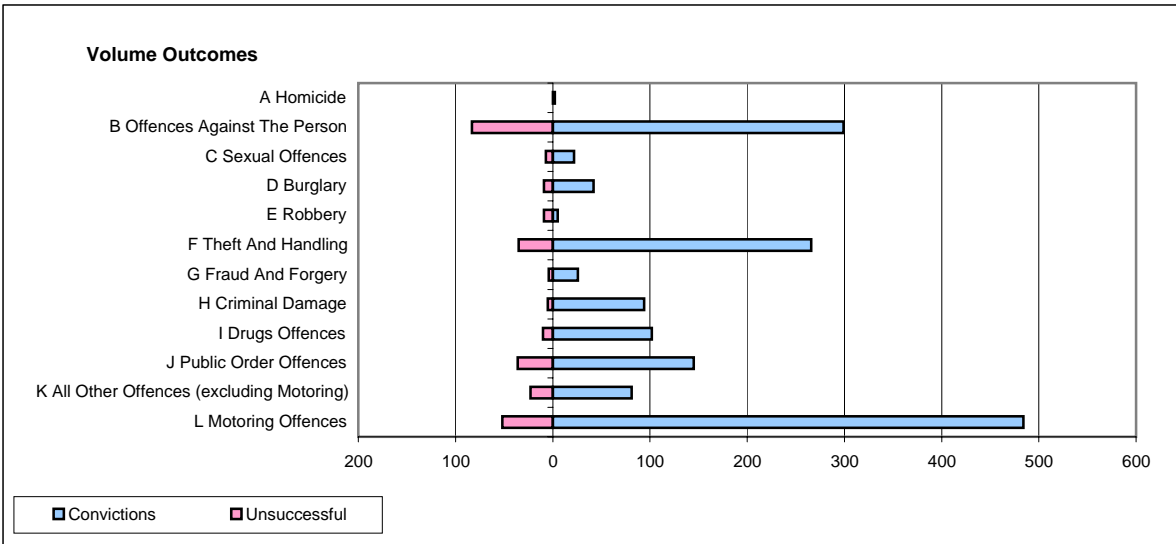
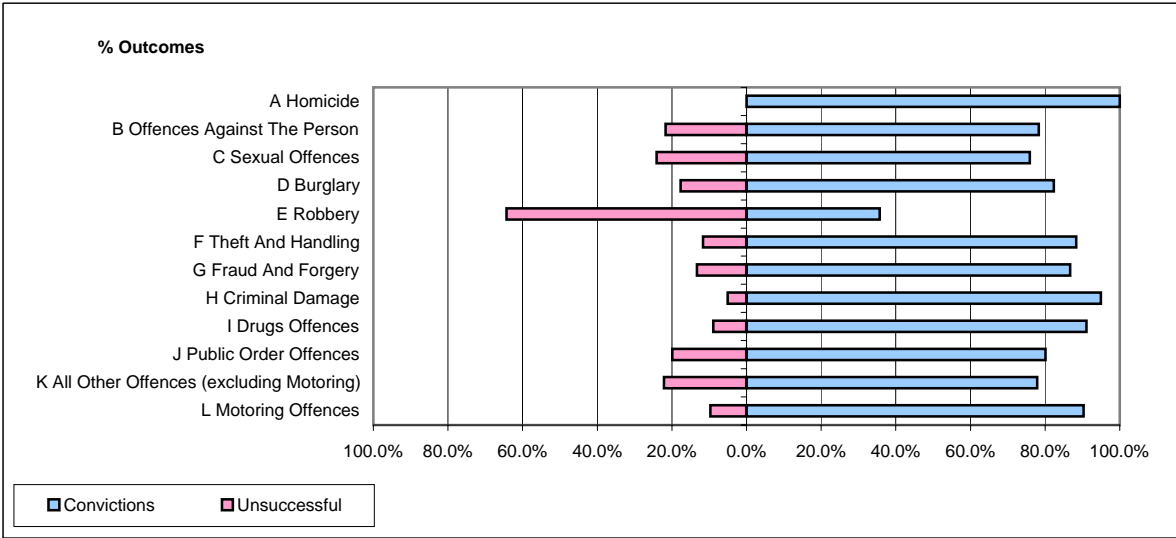


CPS OUTCOMES BY PRINCIPAL OFFENCE CATEGORY

April 2008

P37-Sussex



	Convictions		Unsuccessful	
	Number of Defendants	%	Number of Defendants	%
A Homicide	2	100.0%	0	0.0%
B Offences Against The Person	299	78.3%	83	21.7%
C Sexual Offences	22	75.9%	7	24.1%
D Burglary	42	82.4%	9	17.6%
E Robbery	5	35.7%	9	64.3%
F Theft And Handling	266	88.4%	35	11.6%
G Fraud And Forgery	26	86.7%	4	13.3%
H Criminal Damage	94	94.9%	5	5.1%
I Drugs Offences	102	91.1%	10	8.9%
J Public Order Offences	145	80.1%	36	19.9%
K All Other Offences (excluding Motoring)	81	77.9%	23	22.1%
L Motoring Offences	484	90.3%	52	9.7%
Admin Finalisations	0	0.0%	29	100.0%
TOTAL	1,568	83.9%	302	16.1%