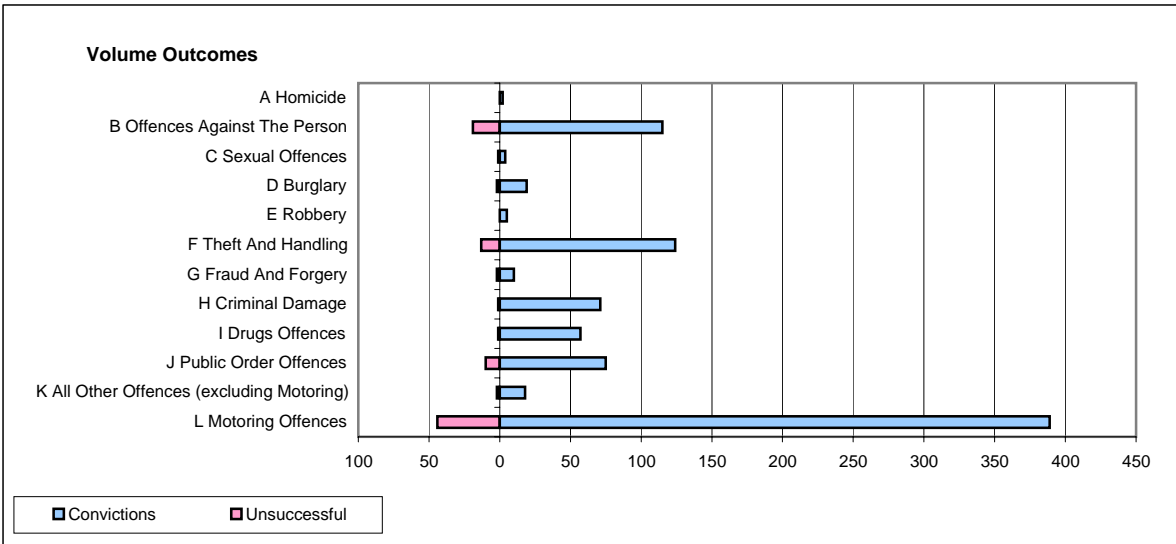
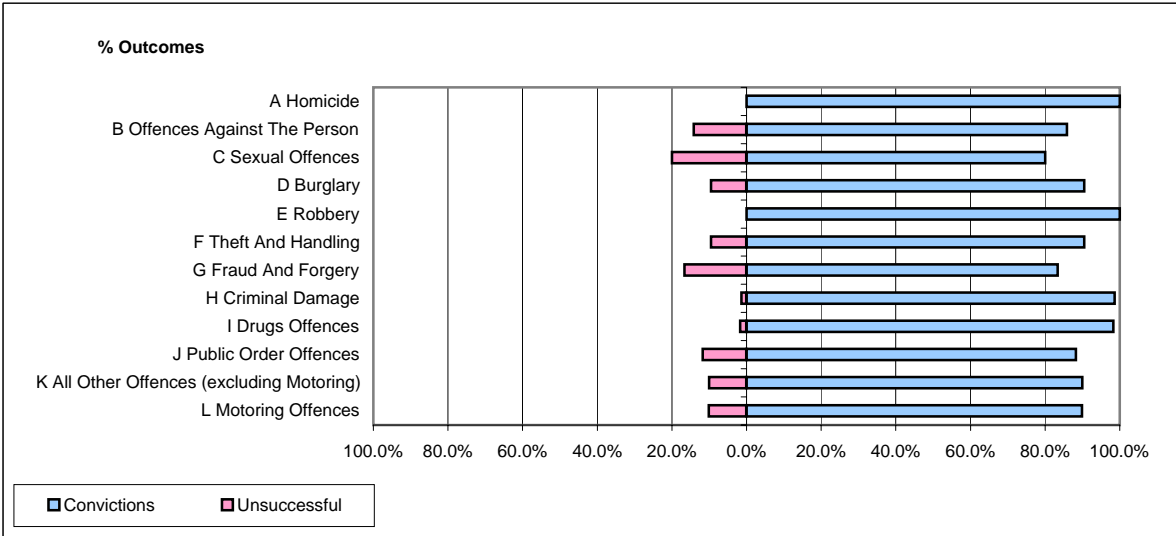


CPS OUTCOMES BY PRINCIPAL OFFENCE CATEGORY

April 2008

P35-Suffolk



	Convictions		Unsuccessful	
	Number of Defendants	%	Number of Defendants	%
A Homicide	2	100.0%	0	0.0%
B Offences Against The Person	115	85.8%	19	14.2%
C Sexual Offences	4	80.0%	1	20.0%
D Burglary	19	90.5%	2	9.5%
E Robbery	5	100.0%	0	0.0%
F Theft And Handling	124	90.5%	13	9.5%
G Fraud And Forgery	10	83.3%	2	16.7%
H Criminal Damage	71	98.6%	1	1.4%
I Drugs Offences	57	98.3%	1	1.7%
J Public Order Offences	75	88.2%	10	11.8%
K All Other Offences (excluding Motoring)	18	90.0%	2	10.0%
L Motoring Offences	389	89.8%	44	10.2%
Admin Finalisations	0	0.0%	8	100.0%
TOTAL	889	89.6%	103	10.4%