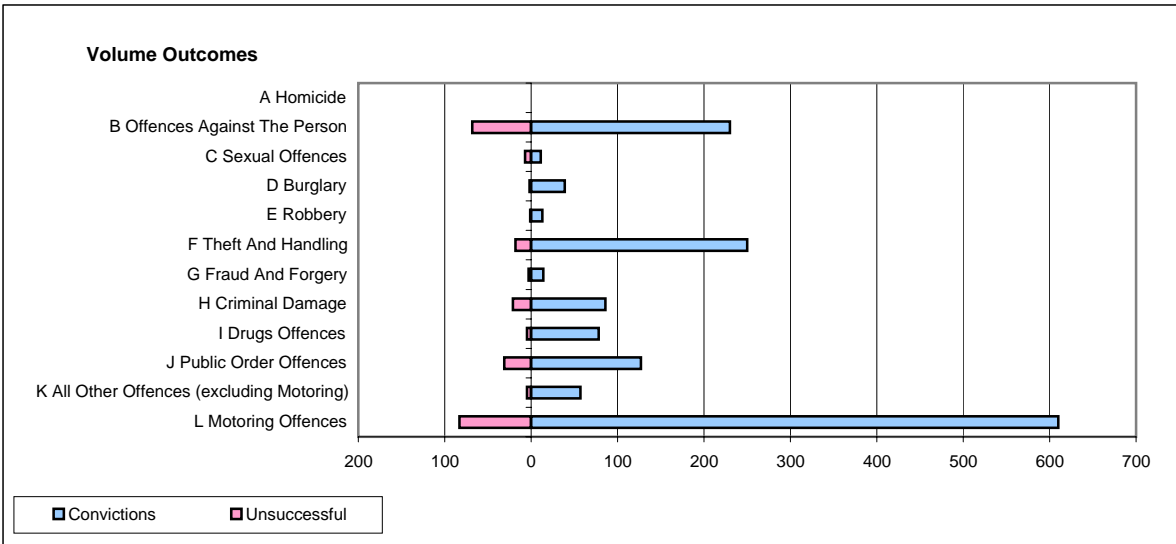
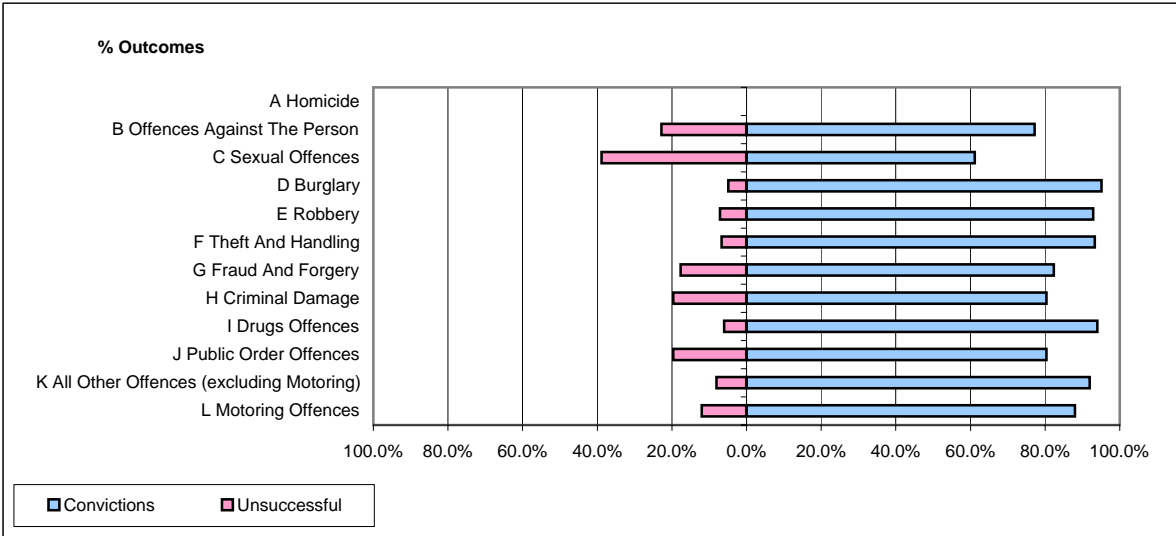


**CPS OUTCOMES BY PRINCIPAL OFFENCE CATEGORY**

**April 2008**

**P34-Staffordshire**



	Convictions		Unsuccessful	
	Number of Defendants	%	Number of Defendants	%
<b>A Homicide</b>	<b>0</b>	<b>0</b>	<b>0</b>	<b>0</b>
<b>B Offences Against The Person</b>	<b>230</b>	<b>77.2%</b>	<b>68</b>	<b>22.8%</b>
<b>C Sexual Offences</b>	<b>11</b>	<b>61.1%</b>	<b>7</b>	<b>38.9%</b>
<b>D Burglary</b>	<b>39</b>	<b>95.1%</b>	<b>2</b>	<b>4.9%</b>
<b>E Robbery</b>	<b>13</b>	<b>92.9%</b>	<b>1</b>	<b>7.1%</b>
<b>F Theft And Handling</b>	<b>250</b>	<b>93.3%</b>	<b>18</b>	<b>6.7%</b>
<b>G Fraud And Forgery</b>	<b>14</b>	<b>82.4%</b>	<b>3</b>	<b>17.6%</b>
<b>H Criminal Damage</b>	<b>86</b>	<b>80.4%</b>	<b>21</b>	<b>19.6%</b>
<b>I Drugs Offences</b>	<b>78</b>	<b>94.0%</b>	<b>5</b>	<b>6.0%</b>
<b>J Public Order Offences</b>	<b>127</b>	<b>80.4%</b>	<b>31</b>	<b>19.6%</b>
<b>K All Other Offences (excluding Motoring)</b>	<b>57</b>	<b>91.9%</b>	<b>5</b>	<b>8.1%</b>
<b>L Motoring Offences</b>	<b>610</b>	<b>88.0%</b>	<b>83</b>	<b>12.0%</b>
<b>Admin Finalisations</b>	<b>0</b>	<b>0.0%</b>	<b>12</b>	<b>100.0%</b>
<b>TOTAL</b>	<b>1,515</b>	<b>85.5%</b>	<b>256</b>	<b>14.5%</b>