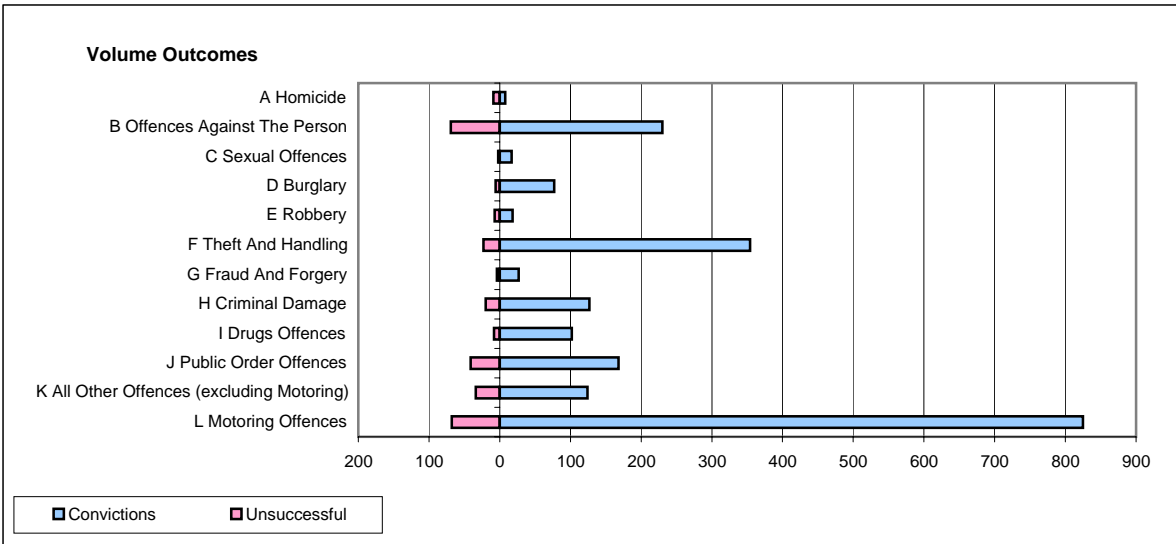
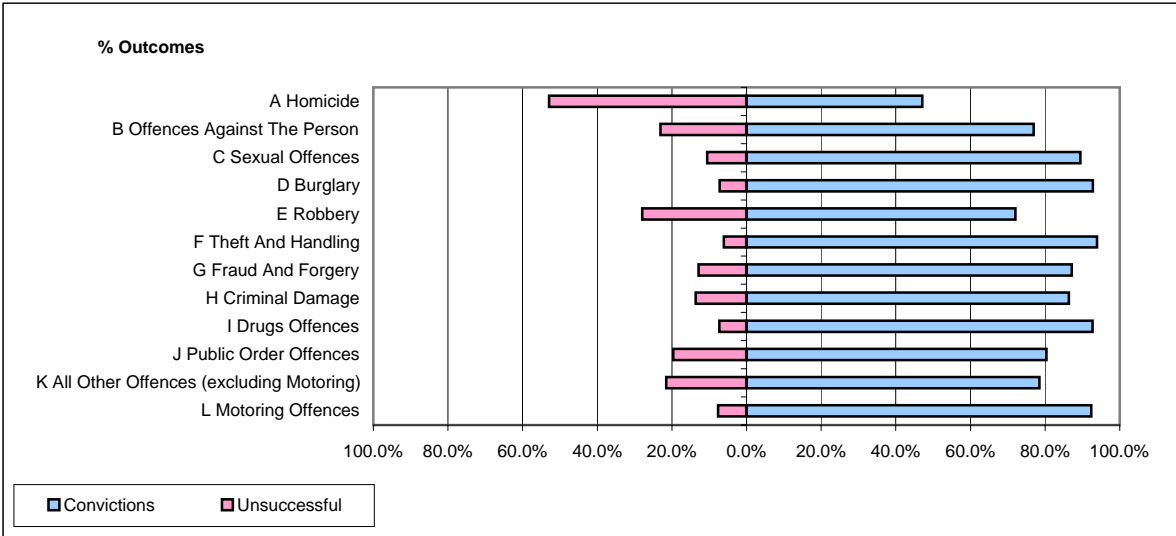


**CPS OUTCOMES BY PRINCIPAL OFFENCE CATEGORY**

**April 2008**

**P33-SouthYorkshire**



	Convictions		Unsuccessful	
	Number of Defendants	%	Number of Defendants	%
<b>A Homicide</b>	<b>8</b>	<b>47.1%</b>	<b>9</b>	<b>52.9%</b>
<b>B Offences Against The Person</b>	<b>230</b>	<b>76.9%</b>	<b>69</b>	<b>23.1%</b>
<b>C Sexual Offences</b>	<b>17</b>	<b>89.5%</b>	<b>2</b>	<b>10.5%</b>
<b>D Burglary</b>	<b>77</b>	<b>92.8%</b>	<b>6</b>	<b>7.2%</b>
<b>E Robbery</b>	<b>18</b>	<b>72.0%</b>	<b>7</b>	<b>28.0%</b>
<b>F Theft And Handling</b>	<b>354</b>	<b>93.9%</b>	<b>23</b>	<b>6.1%</b>
<b>G Fraud And Forgery</b>	<b>27</b>	<b>87.1%</b>	<b>4</b>	<b>12.9%</b>
<b>H Criminal Damage</b>	<b>127</b>	<b>86.4%</b>	<b>20</b>	<b>13.6%</b>
<b>I Drugs Offences</b>	<b>102</b>	<b>92.7%</b>	<b>8</b>	<b>7.3%</b>
<b>J Public Order Offences</b>	<b>168</b>	<b>80.4%</b>	<b>41</b>	<b>19.6%</b>
<b>K All Other Offences (excluding Motoring)</b>	<b>124</b>	<b>78.5%</b>	<b>34</b>	<b>21.5%</b>
<b>L Motoring Offences</b>	<b>825</b>	<b>92.4%</b>	<b>68</b>	<b>7.6%</b>
<b>Admin Finalisations</b>	<b>0</b>	<b>0.0%</b>	<b>24</b>	<b>100.0%</b>
<b>TOTAL</b>	<b>2,077</b>	<b>86.8%</b>	<b>315</b>	<b>13.2%</b>