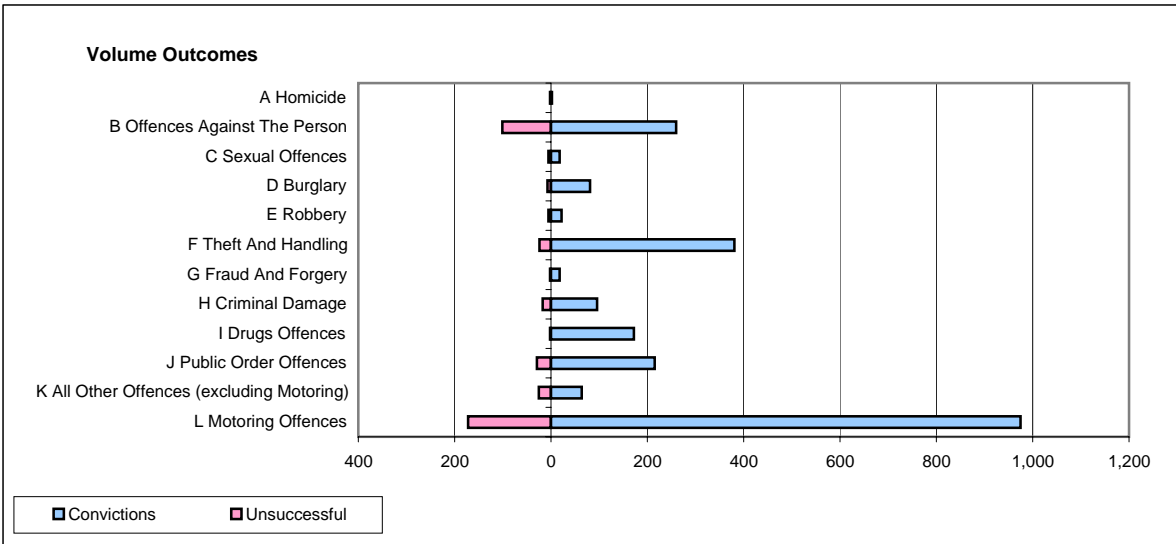
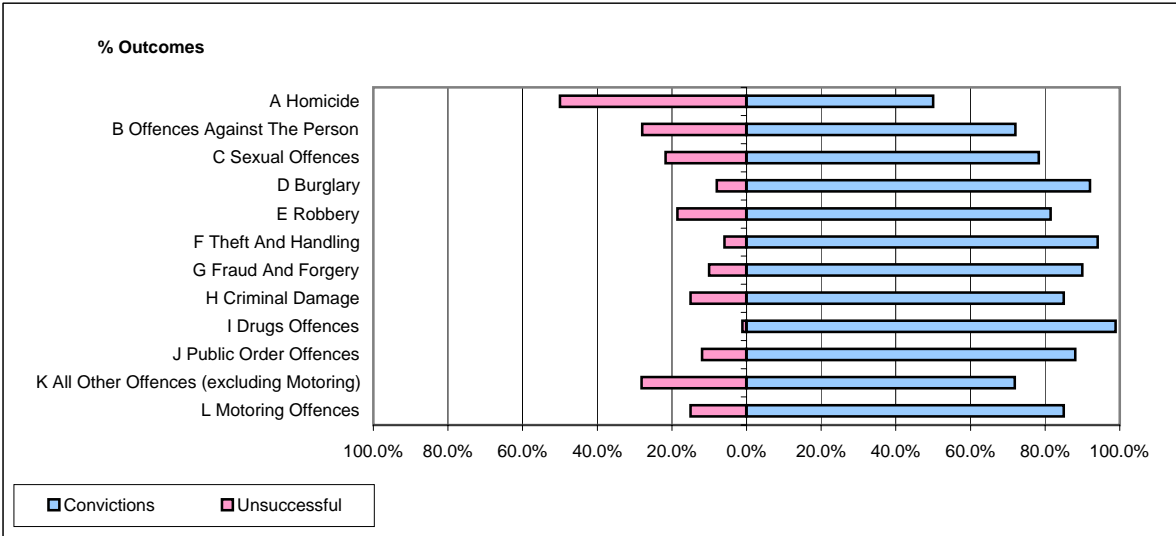


CPS OUTCOMES BY PRINCIPAL OFFENCE CATEGORY

April 2008

P32-SouthWales



	Convictions		Unsuccessful	
	Number of Defendants	%	Number of Defendants	%
A Homicide	2	50.0%	2	50.0%
B Offences Against The Person	260	72.0%	101	28.0%
C Sexual Offences	18	78.3%	5	21.7%
D Burglary	81	92.0%	7	8.0%
E Robbery	22	81.5%	5	18.5%
F Theft And Handling	381	94.1%	24	5.9%
G Fraud And Forgery	18	90.0%	2	10.0%
H Criminal Damage	96	85.0%	17	15.0%
I Drugs Offences	172	98.9%	2	1.1%
J Public Order Offences	215	88.1%	29	11.9%
K All Other Offences (excluding Motoring)	64	71.9%	25	28.1%
L Motoring Offences	975	85.0%	172	15.0%
Admin Finalisations	0	0.0%	54	100.0%
TOTAL	2,304	83.8%	445	16.2%