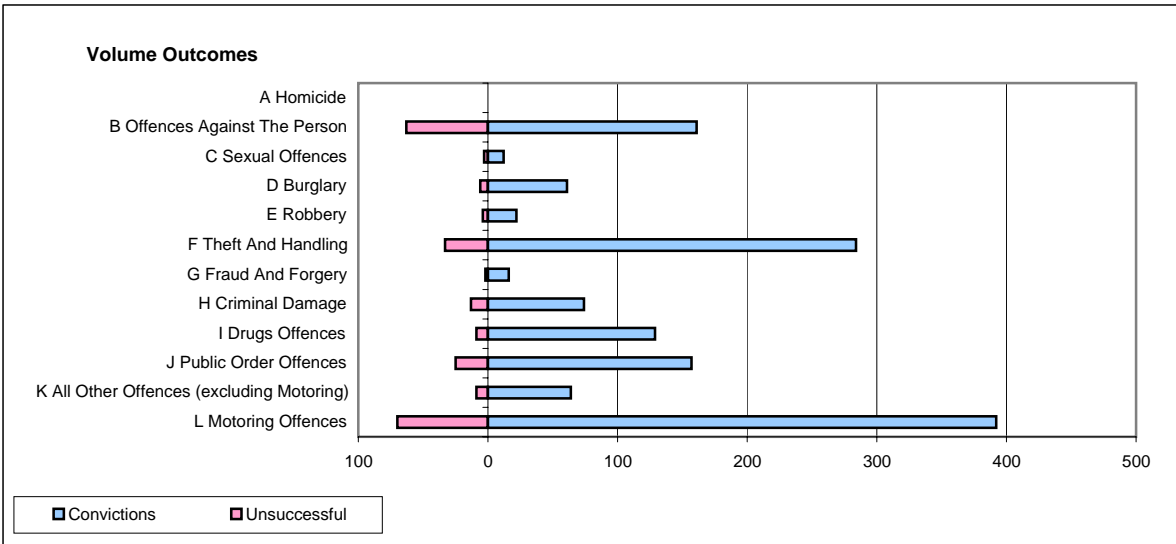
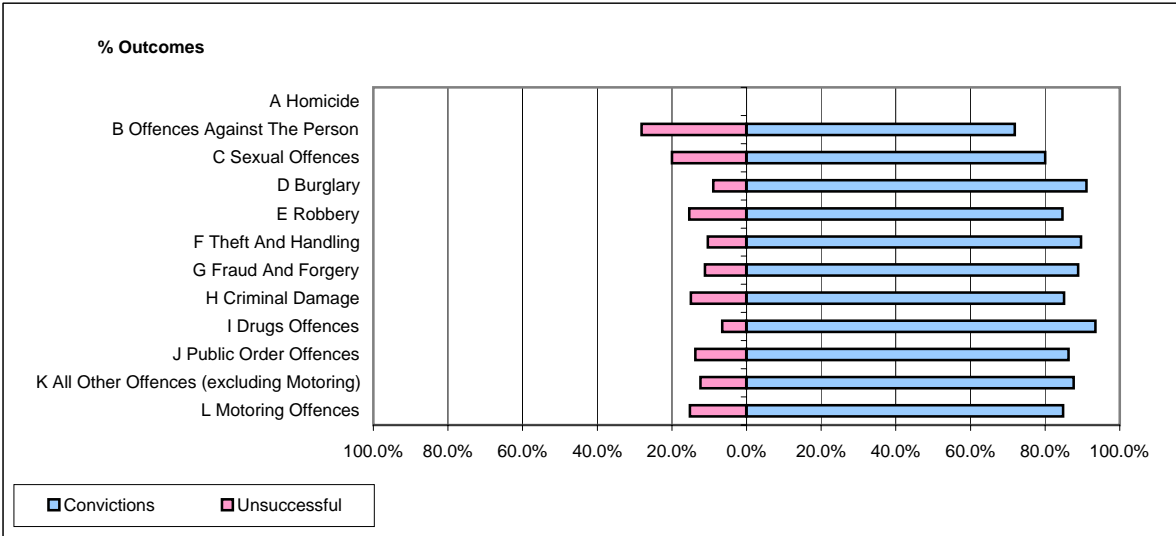


**CPS OUTCOMES BY PRINCIPAL OFFENCE CATEGORY**

**April 2008**

**P31-Nottinghamshire**



	Convictions		Unsuccessful	
	Number of Defendants	%	Number of Defendants	%
<b>A Homicide</b>	<b>0</b>	<b>0</b>	<b>0</b>	<b>0</b>
<b>B Offences Against The Person</b>	<b>161</b>	<b>71.9%</b>	<b>63</b>	<b>28.1%</b>
<b>C Sexual Offences</b>	<b>12</b>	<b>80.0%</b>	<b>3</b>	<b>20.0%</b>
<b>D Burglary</b>	<b>61</b>	<b>91.0%</b>	<b>6</b>	<b>9.0%</b>
<b>E Robbery</b>	<b>22</b>	<b>84.6%</b>	<b>4</b>	<b>15.4%</b>
<b>F Theft And Handling</b>	<b>284</b>	<b>89.6%</b>	<b>33</b>	<b>10.4%</b>
<b>G Fraud And Forgery</b>	<b>16</b>	<b>88.9%</b>	<b>2</b>	<b>11.1%</b>
<b>H Criminal Damage</b>	<b>74</b>	<b>85.1%</b>	<b>13</b>	<b>14.9%</b>
<b>I Drugs Offences</b>	<b>129</b>	<b>93.5%</b>	<b>9</b>	<b>6.5%</b>
<b>J Public Order Offences</b>	<b>157</b>	<b>86.3%</b>	<b>25</b>	<b>13.7%</b>
<b>K All Other Offences (excluding Motoring)</b>	<b>64</b>	<b>87.7%</b>	<b>9</b>	<b>12.3%</b>
<b>L Motoring Offences</b>	<b>392</b>	<b>84.8%</b>	<b>70</b>	<b>15.2%</b>
<b>Admin Finalisations</b>	<b>0</b>	<b>0.0%</b>	<b>18</b>	<b>100.0%</b>
<b>TOTAL</b>	<b>1,372</b>	<b>84.3%</b>	<b>255</b>	<b>15.7%</b>