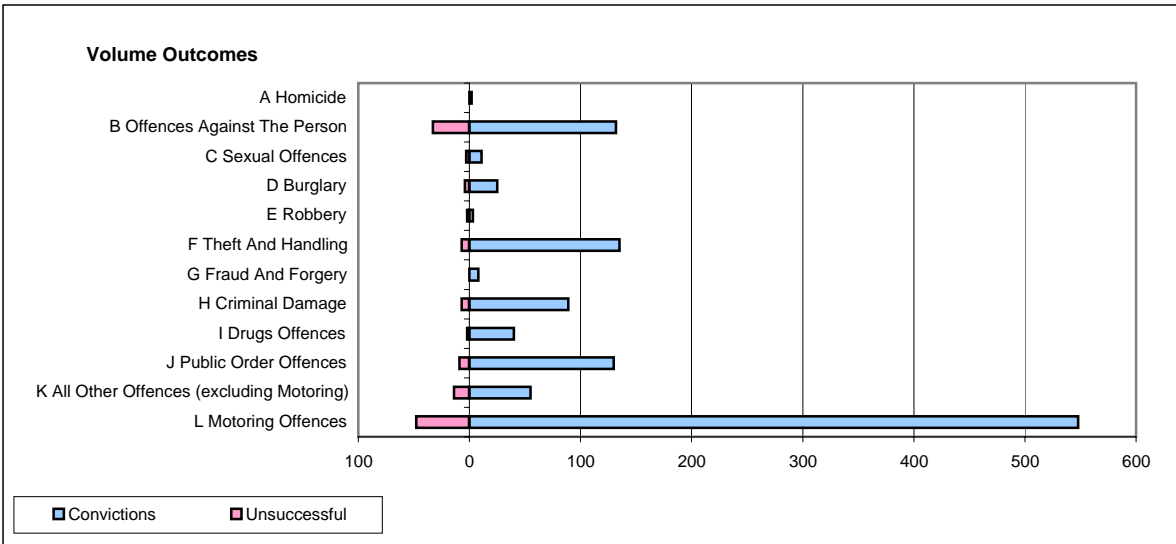
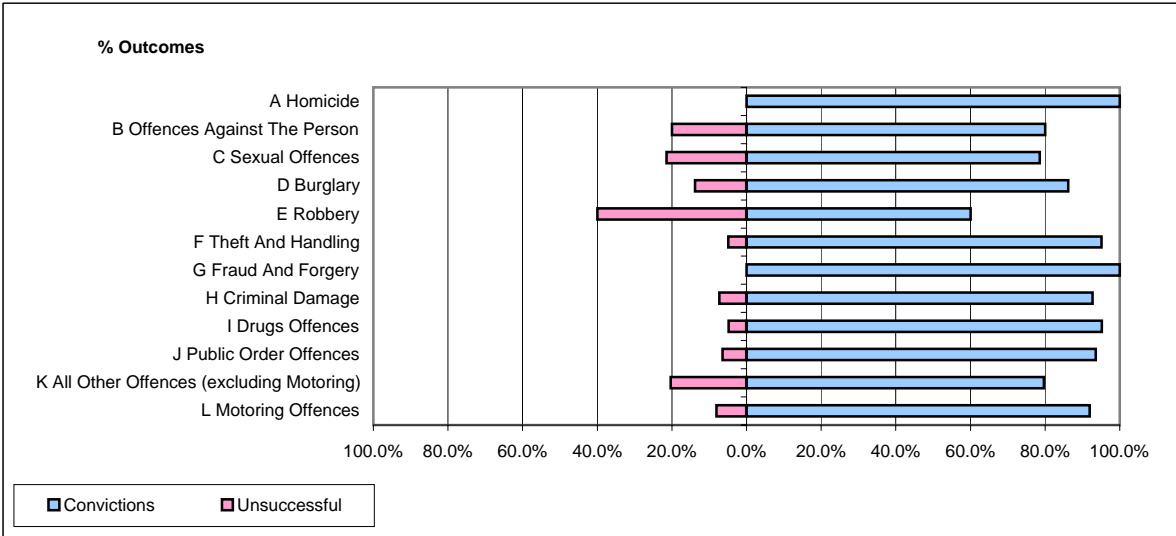


**CPS OUTCOMES BY PRINCIPAL OFFENCE CATEGORY**

**April 2008**

**P29-NorthWales**



	Convictions		Unsuccessful	
	Number of Defendants	%	Number of Defendants	%
<b>A Homicide</b>	<b>2</b>	<b>100.0%</b>	<b>0</b>	<b>0.0%</b>
<b>B Offences Against The Person</b>	<b>132</b>	<b>80.0%</b>	<b>33</b>	<b>20.0%</b>
<b>C Sexual Offences</b>	<b>11</b>	<b>78.6%</b>	<b>3</b>	<b>21.4%</b>
<b>D Burglary</b>	<b>25</b>	<b>86.2%</b>	<b>4</b>	<b>13.8%</b>
<b>E Robbery</b>	<b>3</b>	<b>60.0%</b>	<b>2</b>	<b>40.0%</b>
<b>F Theft And Handling</b>	<b>135</b>	<b>95.1%</b>	<b>7</b>	<b>4.9%</b>
<b>G Fraud And Forgery</b>	<b>8</b>	<b>100.0%</b>	<b>0</b>	<b>0.0%</b>
<b>H Criminal Damage</b>	<b>89</b>	<b>92.7%</b>	<b>7</b>	<b>7.3%</b>
<b>I Drugs Offences</b>	<b>40</b>	<b>95.2%</b>	<b>2</b>	<b>4.8%</b>
<b>J Public Order Offences</b>	<b>130</b>	<b>93.5%</b>	<b>9</b>	<b>6.5%</b>
<b>K All Other Offences (excluding Motoring)</b>	<b>55</b>	<b>79.7%</b>	<b>14</b>	<b>20.3%</b>
<b>L Motoring Offences</b>	<b>548</b>	<b>91.9%</b>	<b>48</b>	<b>8.1%</b>
<b>Admin Finalisations</b>	<b>0</b>	<b>0.0%</b>	<b>12</b>	<b>100.0%</b>
<b>TOTAL</b>	<b>1,178</b>	<b>89.3%</b>	<b>141</b>	<b>10.7%</b>