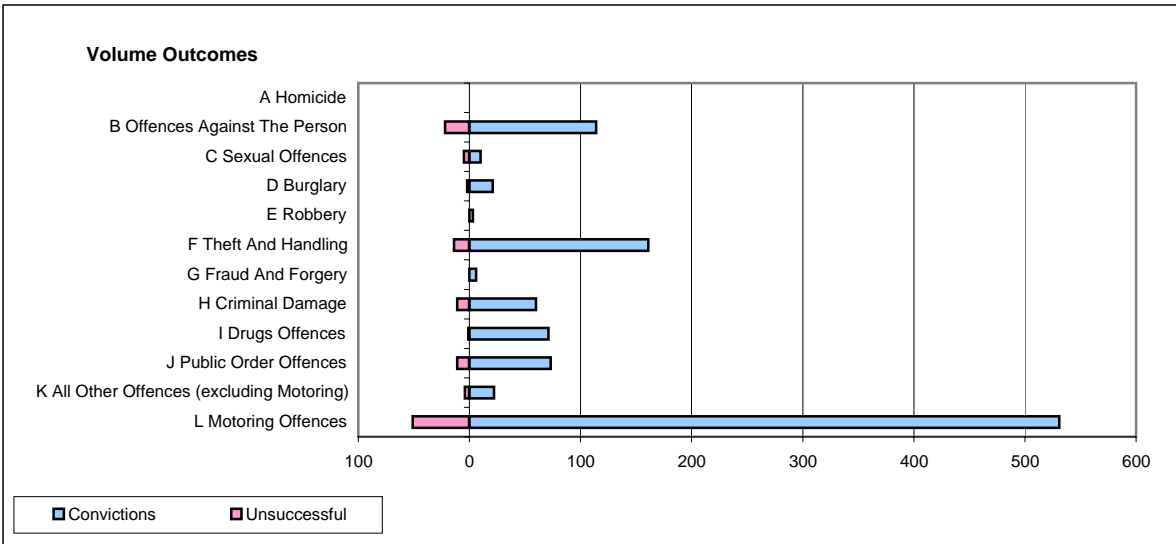
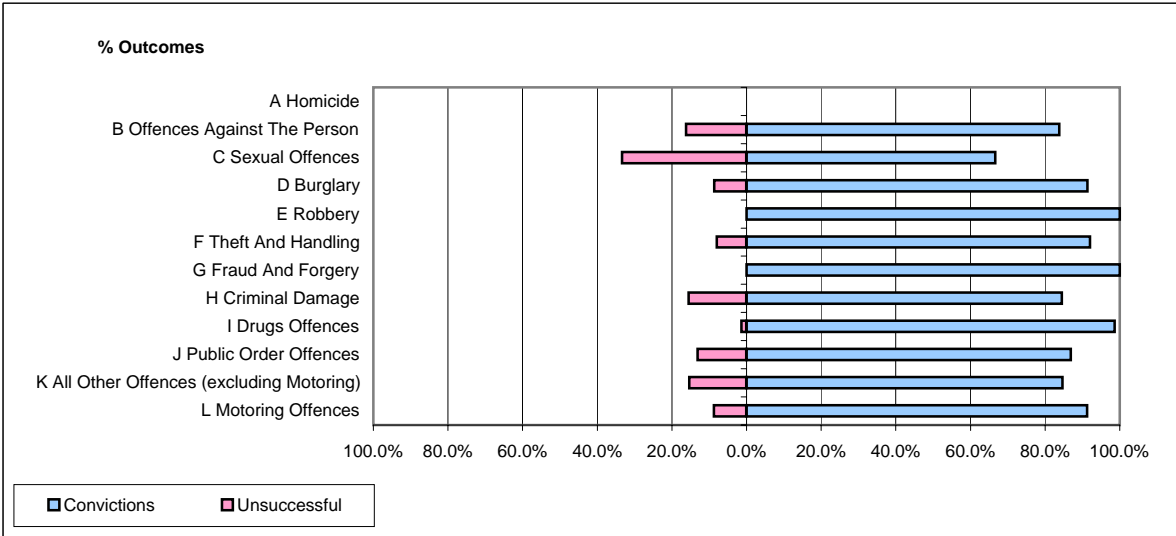


CPS OUTCOMES BY PRINCIPAL OFFENCE CATEGORY

April 2008

P26-Norfolk



	Convictions		Unsuccessful	
	Number of Defendants	%	Number of Defendants	%
A Homicide	0	0	0	0
B Offences Against The Person	114	83.8%	22	16.2%
C Sexual Offences	10	66.7%	5	33.3%
D Burglary	21	91.3%	2	8.7%
E Robbery	3	100.0%	0	0.0%
F Theft And Handling	161	92.0%	14	8.0%
G Fraud And Forgery	6	100.0%	0	0.0%
H Criminal Damage	60	84.5%	11	15.5%
I Drugs Offences	71	98.6%	1	1.4%
J Public Order Offences	73	86.9%	11	13.1%
K All Other Offences (excluding Motoring)	22	84.6%	4	15.4%
L Motoring Offences	531	91.2%	51	8.8%
Admin Finalisations	0	0.0%	9	100.0%
TOTAL	1,072	89.2%	130	10.8%