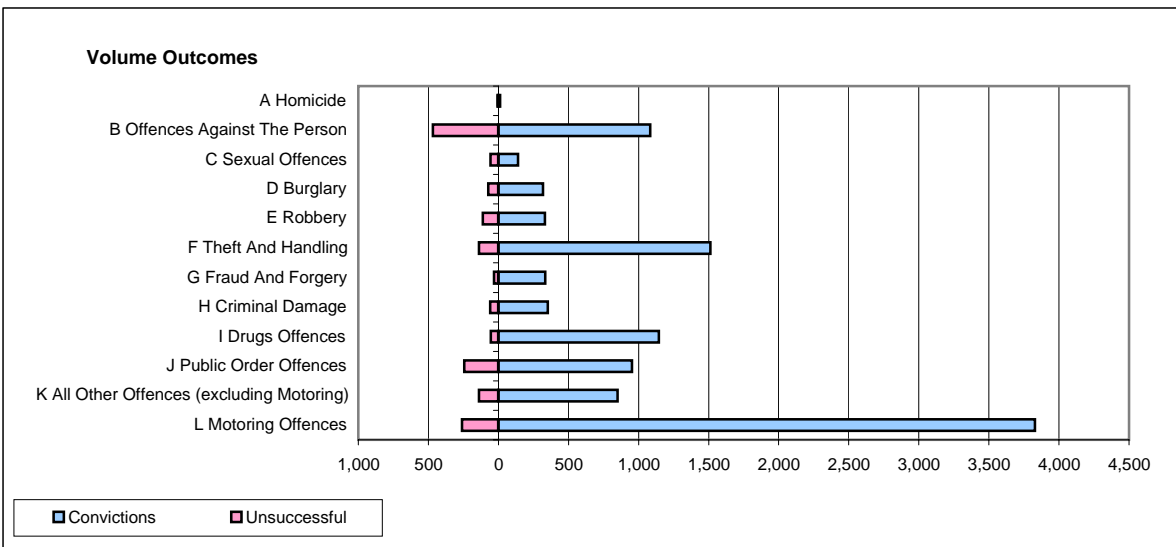
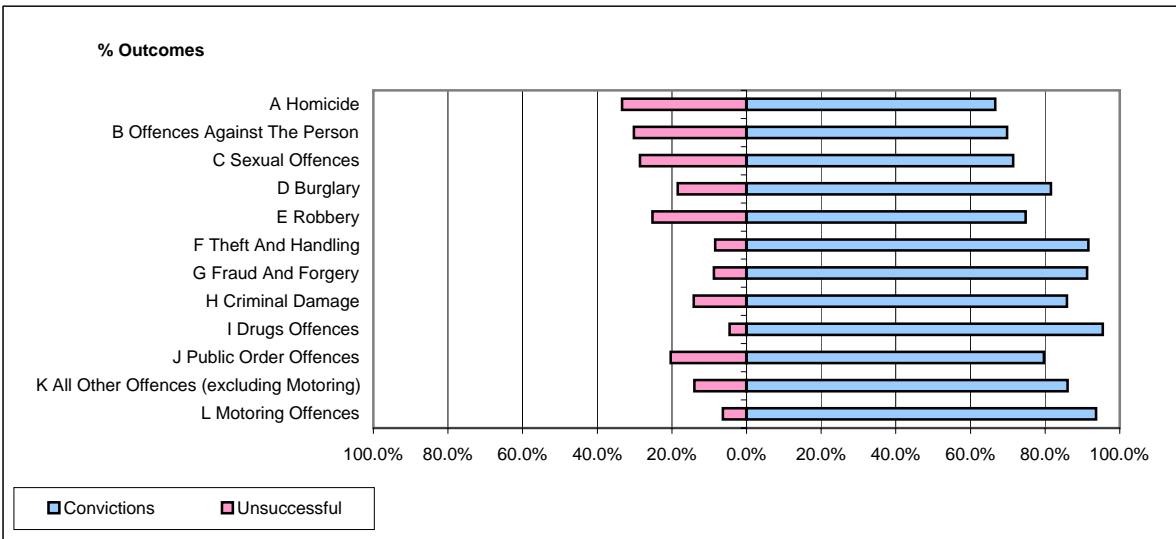


CPS OUTCOMES BY PRINCIPAL OFFENCE CATEGORY

April 2008

P25-Metropolitan&City



	Convictions		Unsuccessful	
	Number of Defendants	%	Number of Defendants	%
A Homicide	12	66.7%	6	33.3%
B Offences Against The Person	1,083	69.8%	468	30.2%
C Sexual Offences	140	71.4%	56	28.6%
D Burglary	319	81.6%	72	18.4%
E Robbery	332	74.8%	112	25.2%
F Theft And Handling	1,513	91.6%	139	8.4%
G Fraud And Forgery	333	91.2%	32	8.8%
H Criminal Damage	353	85.9%	58	14.1%
I Drugs Offences	1,145	95.5%	54	4.5%
J Public Order Offences	952	79.7%	243	20.3%
K All Other Offences (excluding Motoring)	849	86.0%	138	14.0%
L Motoring Offences	3,828	93.6%	261	6.4%
Admin Finalisations	0	0.0%	348	100.0%
TOTAL	10,859	84.5%	1,987	15.5%