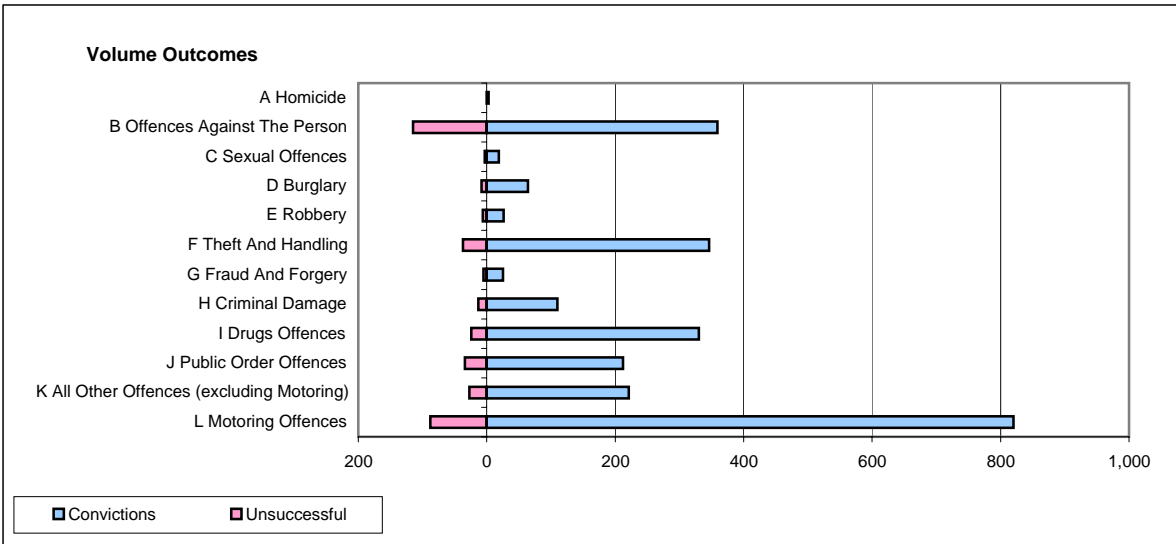
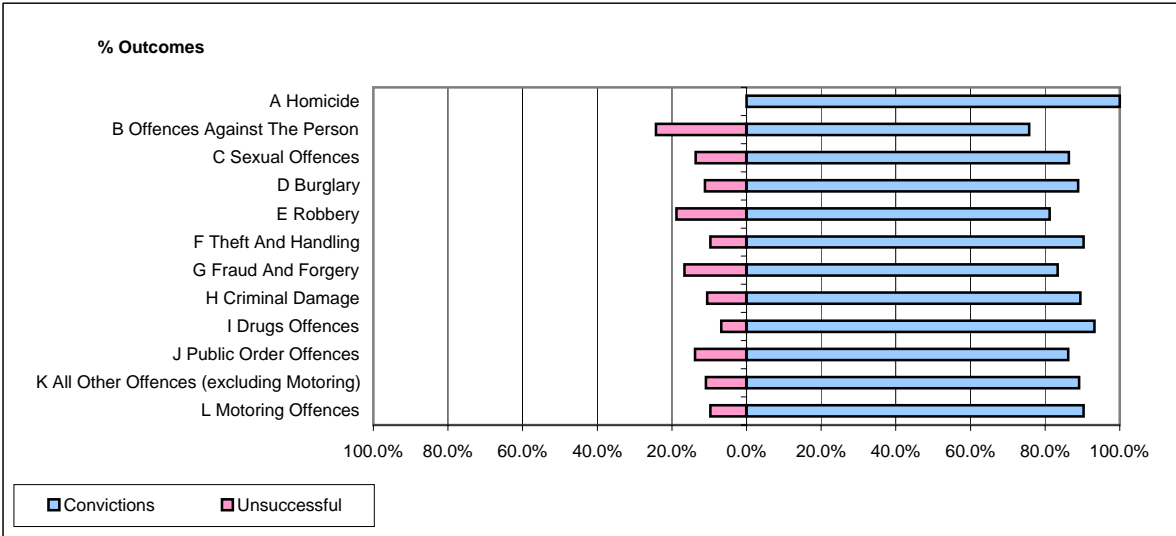


**CPS OUTCOMES BY PRINCIPAL OFFENCE CATEGORY**

**April 2008**

**P24-Merseyside**



	Convictions		Unsuccessful	
	Number of Defendants	%	Number of Defendants	%
<b>A Homicide</b>	<b>3</b>	<b>100.0%</b>	<b>0</b>	<b>0.0%</b>
<b>B Offences Against The Person</b>	<b>359</b>	<b>75.7%</b>	<b>115</b>	<b>24.3%</b>
<b>C Sexual Offences</b>	<b>19</b>	<b>86.4%</b>	<b>3</b>	<b>13.6%</b>
<b>D Burglary</b>	<b>64</b>	<b>88.9%</b>	<b>8</b>	<b>11.1%</b>
<b>E Robbery</b>	<b>26</b>	<b>81.3%</b>	<b>6</b>	<b>18.8%</b>
<b>F Theft And Handling</b>	<b>346</b>	<b>90.3%</b>	<b>37</b>	<b>9.7%</b>
<b>G Fraud And Forgery</b>	<b>25</b>	<b>83.3%</b>	<b>5</b>	<b>16.7%</b>
<b>H Criminal Damage</b>	<b>110</b>	<b>89.4%</b>	<b>13</b>	<b>10.6%</b>
<b>I Drugs Offences</b>	<b>330</b>	<b>93.2%</b>	<b>24</b>	<b>6.8%</b>
<b>J Public Order Offences</b>	<b>212</b>	<b>86.2%</b>	<b>34</b>	<b>13.8%</b>
<b>K All Other Offences (excluding Motoring)</b>	<b>221</b>	<b>89.1%</b>	<b>27</b>	<b>10.9%</b>
<b>L Motoring Offences</b>	<b>820</b>	<b>90.3%</b>	<b>88</b>	<b>9.7%</b>
<b>Admin Finalisations</b>	<b>0</b>	<b>0.0%</b>	<b>37</b>	<b>100.0%</b>
<b>TOTAL</b>	<b>2,535</b>	<b>86.5%</b>	<b>397</b>	<b>13.5%</b>