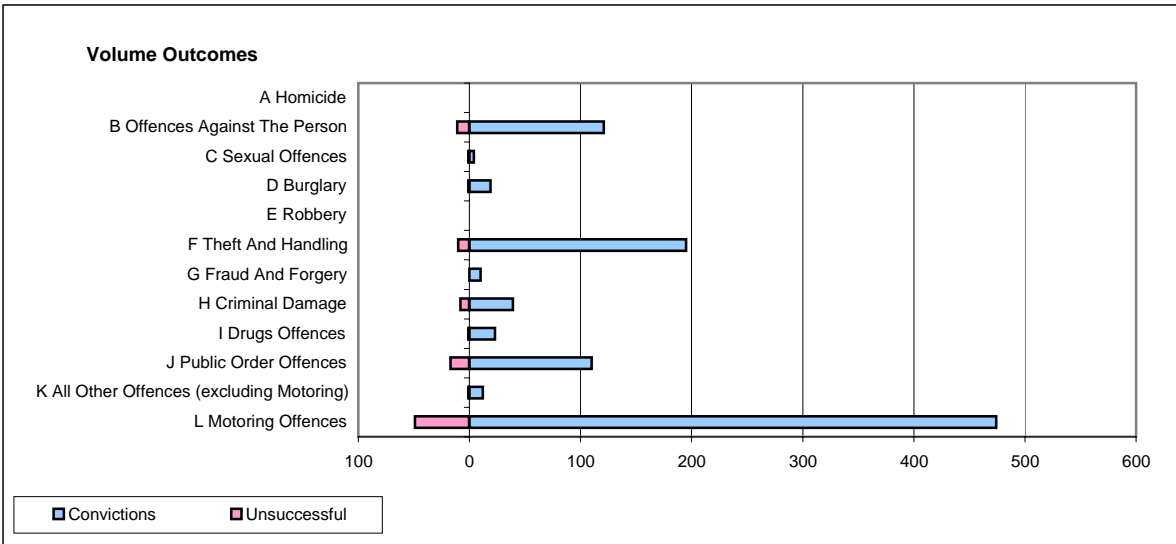
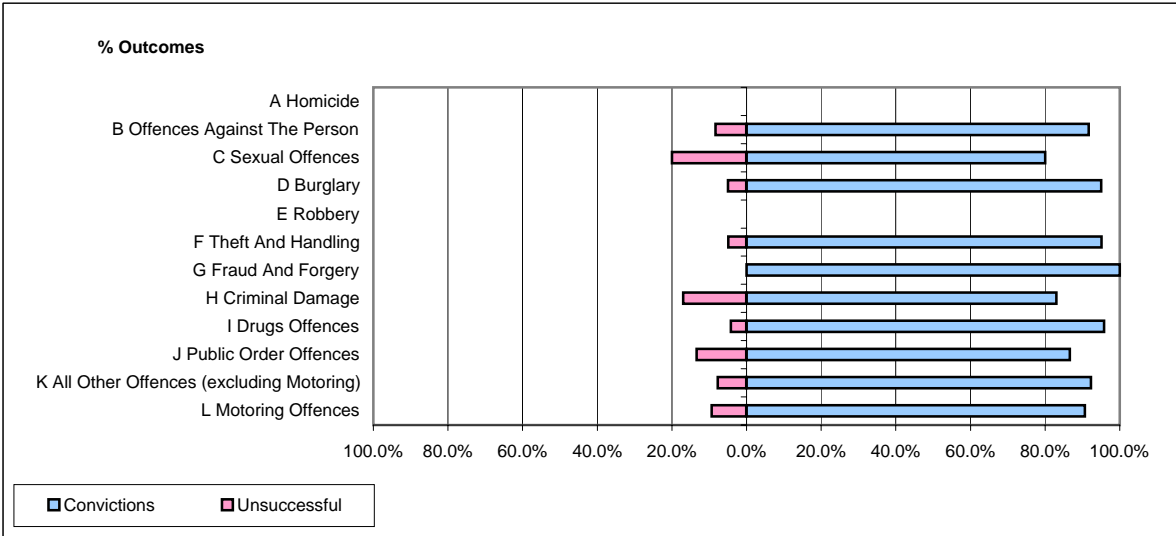


CPS OUTCOMES BY PRINCIPAL OFFENCE CATEGORY

April 2008

P23-Lincolnshire



| | Convictions | | Unsuccessful | |
|--|----------------------|---------------|----------------------|---------------|
| | Number of Defendants | % | Number of Defendants | % |
| A Homicide | 0 | 0 | 0 | 0 |
| B Offences Against The Person | 121 | 91.7% | 11 | 8.3% |
| C Sexual Offences | 4 | 80.0% | 1 | 20.0% |
| D Burglary | 19 | 95.0% | 1 | 5.0% |
| E Robbery | 0 | 0 | 0 | 0 |
| F Theft And Handling | 195 | 95.1% | 10 | 4.9% |
| G Fraud And Forgery | 10 | 100.0% | 0 | 0.0% |
| H Criminal Damage | 39 | 83.0% | 8 | 17.0% |
| I Drugs Offences | 23 | 95.8% | 1 | 4.2% |
| J Public Order Offences | 110 | 86.6% | 17 | 13.4% |
| K All Other Offences (excluding Motoring) | 12 | 92.3% | 1 | 7.7% |
| L Motoring Offences | 474 | 90.6% | 49 | 9.4% |
| Admin Finalisations | 0 | 0.0% | 15 | 100.0% |
| TOTAL | 1,007 | 89.8% | 114 | 10.2% |