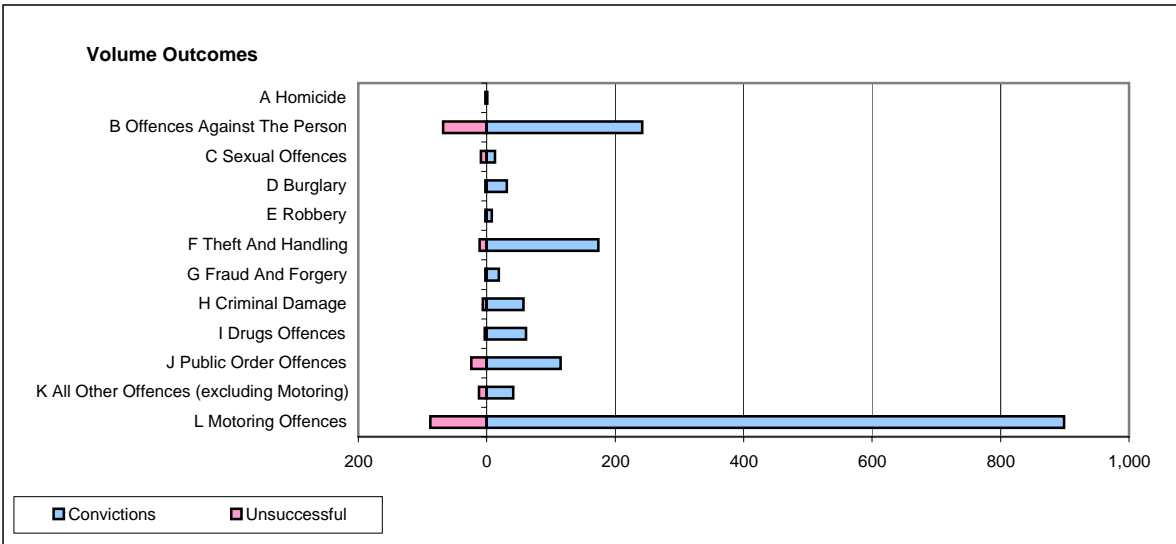
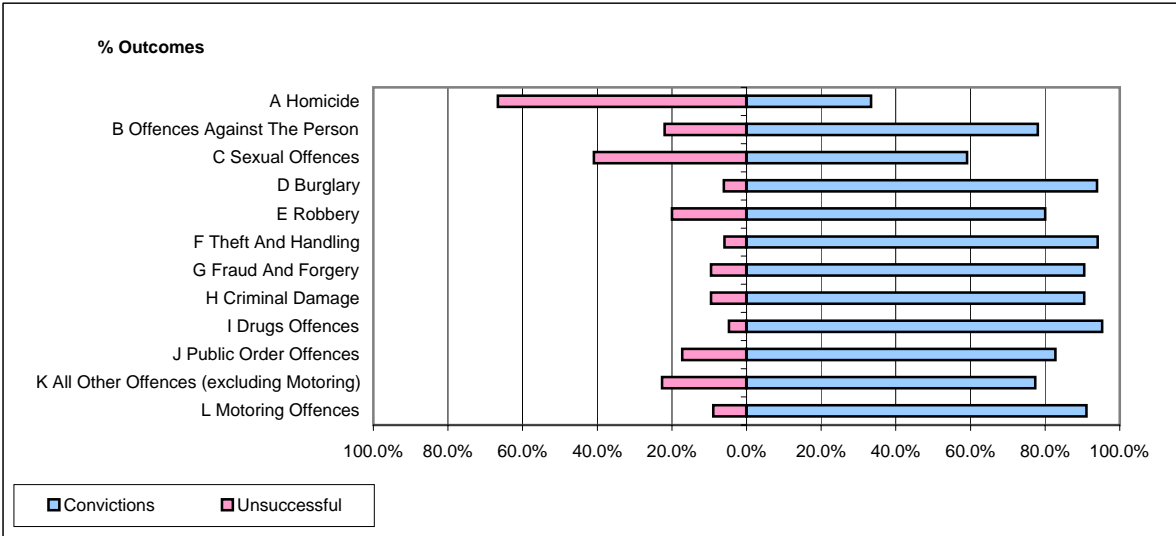


CPS OUTCOMES BY PRINCIPAL OFFENCE CATEGORY

April 2008

P22-Leicestershire



	Convictions		Unsuccessful	
	Number of Defendants	%	Number of Defendants	%
A Homicide	1	33.3%	2	66.7%
B Offences Against The Person	242	78.1%	68	21.9%
C Sexual Offences	13	59.1%	9	40.9%
D Burglary	31	93.9%	2	6.1%
E Robbery	8	80.0%	2	20.0%
F Theft And Handling	174	94.1%	11	5.9%
G Fraud And Forgery	19	90.5%	2	9.5%
H Criminal Damage	57	90.5%	6	9.5%
I Drugs Offences	61	95.3%	3	4.7%
J Public Order Offences	115	82.7%	24	17.3%
K All Other Offences (excluding Motoring)	41	77.4%	12	22.6%
L Motoring Offences	899	91.1%	88	8.9%
Admin Finalisations	0	0.0%	28	100.0%
TOTAL	1,661	86.6%	257	13.4%