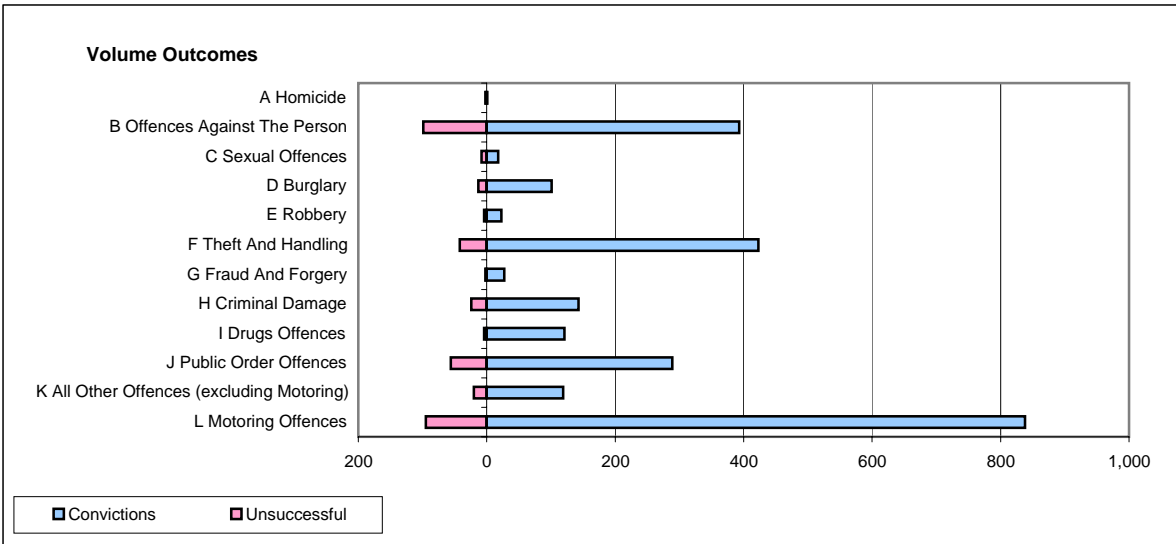
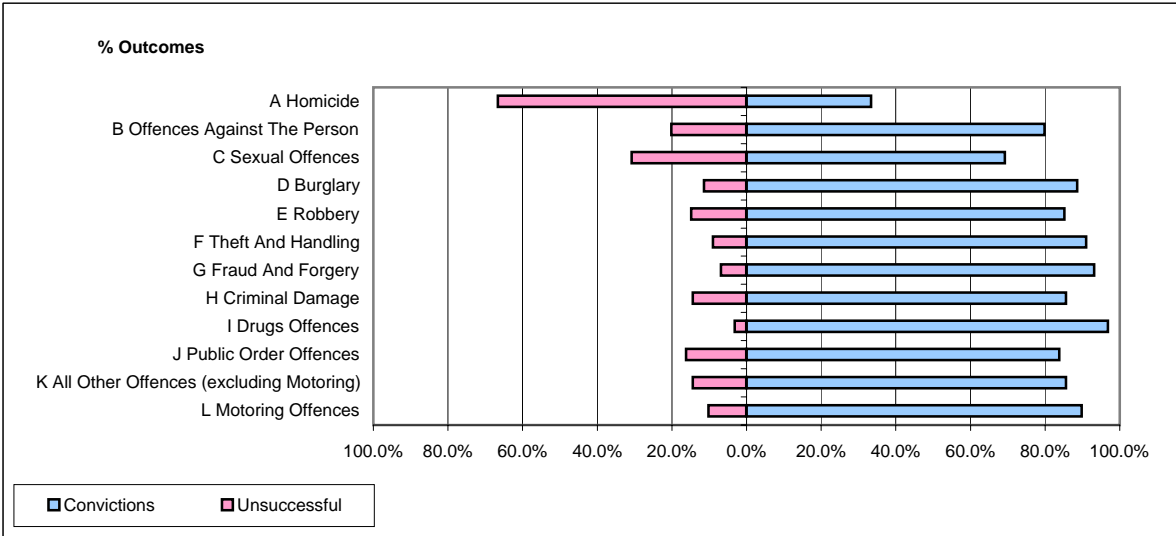


CPS OUTCOMES BY PRINCIPAL OFFENCE CATEGORY

April 2008

P21-Lancashire



	Convictions		Unsuccessful	
	Number of Defendants	%	Number of Defendants	%
A Homicide	1	33.3%	2	66.7%
B Offences Against The Person	393	79.9%	99	20.1%
C Sexual Offences	18	69.2%	8	30.8%
D Burglary	101	88.6%	13	11.4%
E Robbery	23	85.2%	4	14.8%
F Theft And Handling	423	91.0%	42	9.0%
G Fraud And Forgery	27	93.1%	2	6.9%
H Criminal Damage	143	85.6%	24	14.4%
I Drugs Offences	121	96.8%	4	3.2%
J Public Order Offences	289	83.8%	56	16.2%
K All Other Offences (excluding Motoring)	119	85.6%	20	14.4%
L Motoring Offences	838	89.8%	95	10.2%
Admin Finalisations	0	0.0%	28	100.0%
TOTAL	2,496	86.3%	397	13.7%