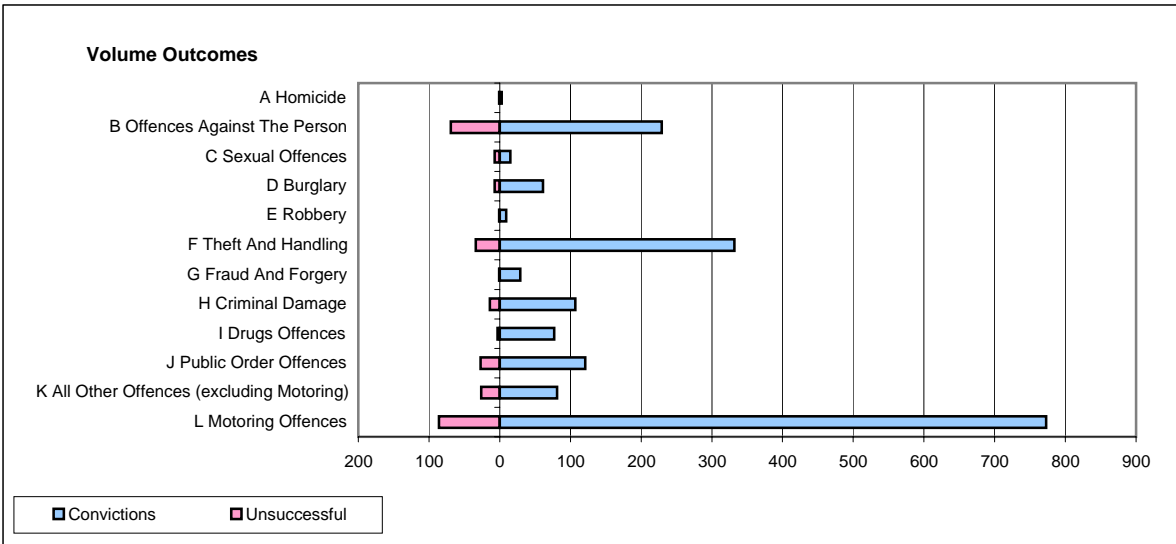
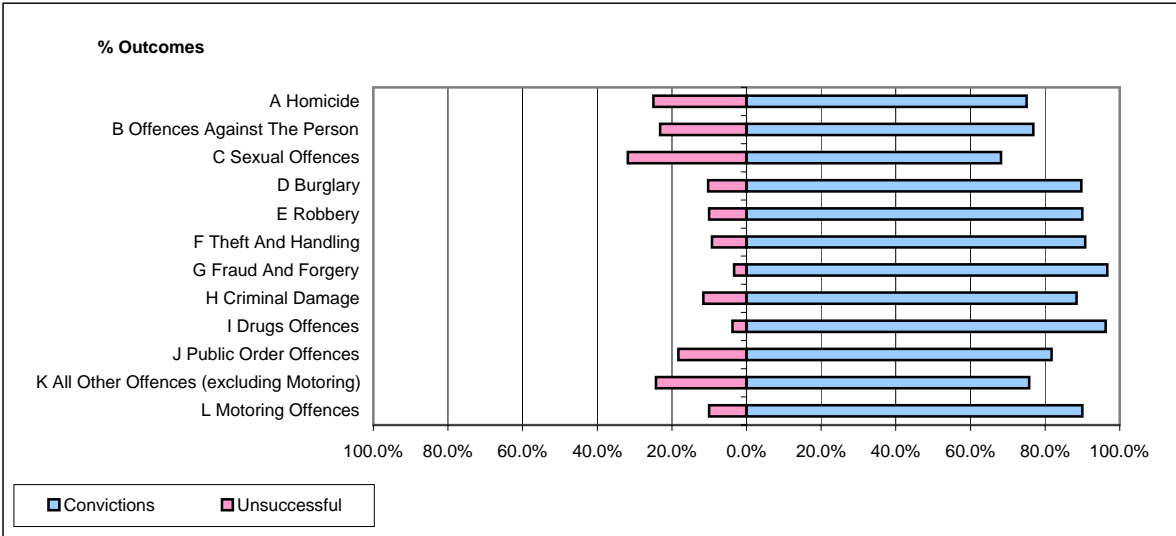


CPS OUTCOMES BY PRINCIPAL OFFENCE CATEGORY

April 2008

P20-Kent



	Convictions		Unsuccessful	
	Number of Defendants	%	Number of Defendants	%
A Homicide	3	75.0%	1	25.0%
B Offences Against The Person	229	76.8%	69	23.2%
C Sexual Offences	15	68.2%	7	31.8%
D Burglary	61	89.7%	7	10.3%
E Robbery	9	90.0%	1	10.0%
F Theft And Handling	332	90.7%	34	9.3%
G Fraud And Forgery	29	96.7%	1	3.3%
H Criminal Damage	107	88.4%	14	11.6%
I Drugs Offences	77	96.3%	3	3.8%
J Public Order Offences	121	81.8%	27	18.2%
K All Other Offences (excluding Motoring)	81	75.7%	26	24.3%
L Motoring Offences	773	90.0%	86	10.0%
Admin Finalisations	0	0.0%	30	100.0%
TOTAL	1,837	85.7%	306	14.3%