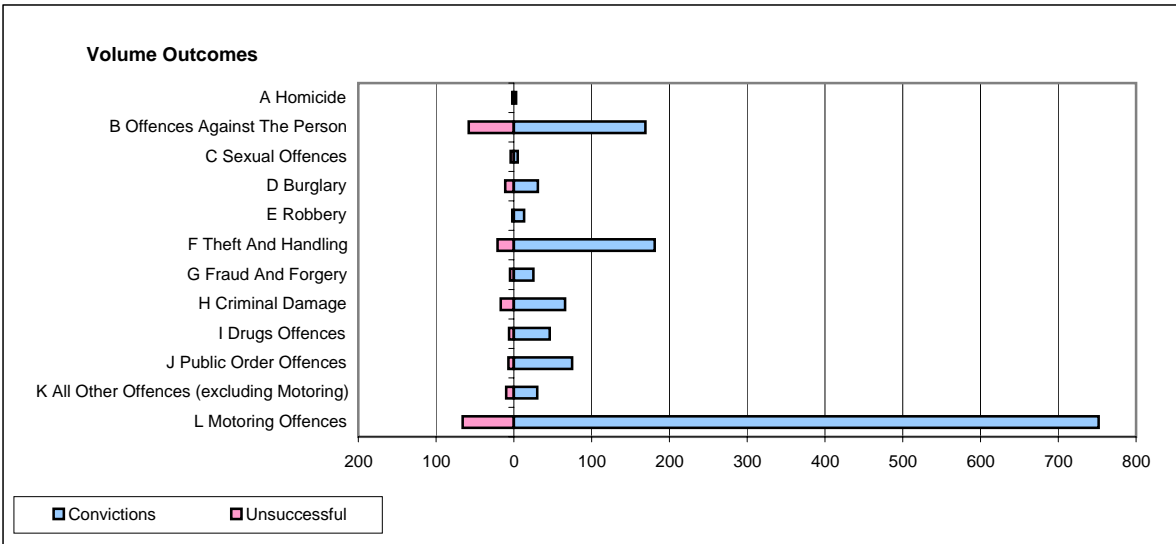
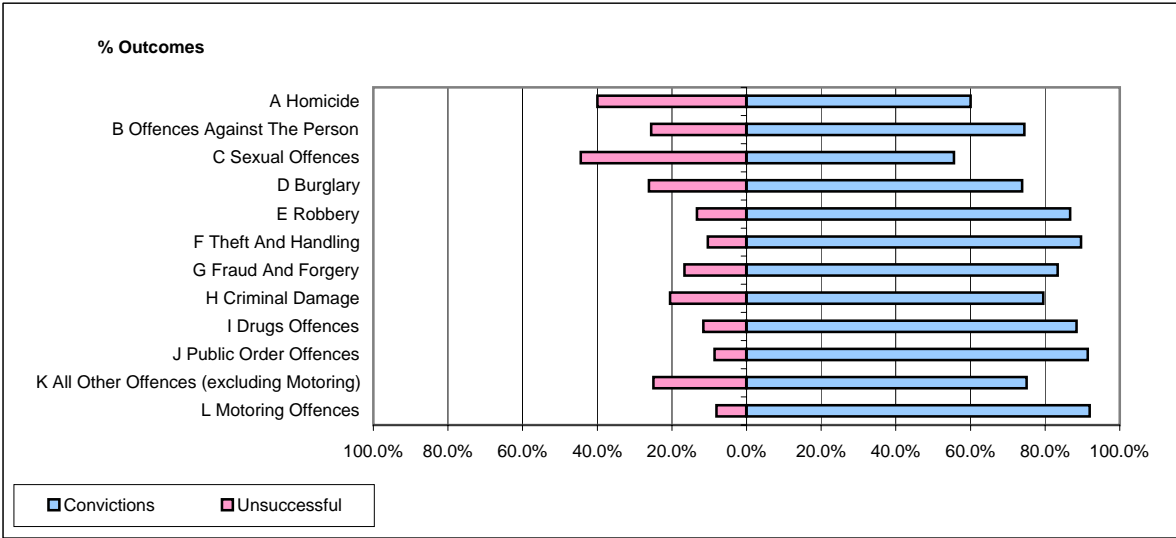


**CPS OUTCOMES BY PRINCIPAL OFFENCE CATEGORY**

**April 2008**

**P18-Hertfordshire**



	Convictions		Unsuccessful	
	Number of Defendants	%	Number of Defendants	%
<b>A Homicide</b>	<b>3</b>	<b>60.0%</b>	<b>2</b>	<b>40.0%</b>
<b>B Offences Against The Person</b>	<b>169</b>	<b>74.4%</b>	<b>58</b>	<b>25.6%</b>
<b>C Sexual Offences</b>	<b>5</b>	<b>55.6%</b>	<b>4</b>	<b>44.4%</b>
<b>D Burglary</b>	<b>31</b>	<b>73.8%</b>	<b>11</b>	<b>26.2%</b>
<b>E Robbery</b>	<b>13</b>	<b>86.7%</b>	<b>2</b>	<b>13.3%</b>
<b>F Theft And Handling</b>	<b>181</b>	<b>89.6%</b>	<b>21</b>	<b>10.4%</b>
<b>G Fraud And Forgery</b>	<b>25</b>	<b>83.3%</b>	<b>5</b>	<b>16.7%</b>
<b>H Criminal Damage</b>	<b>66</b>	<b>79.5%</b>	<b>17</b>	<b>20.5%</b>
<b>I Drugs Offences</b>	<b>46</b>	<b>88.5%</b>	<b>6</b>	<b>11.5%</b>
<b>J Public Order Offences</b>	<b>75</b>	<b>91.5%</b>	<b>7</b>	<b>8.5%</b>
<b>K All Other Offences (excluding Motoring)</b>	<b>30</b>	<b>75.0%</b>	<b>10</b>	<b>25.0%</b>
<b>L Motoring Offences</b>	<b>752</b>	<b>91.9%</b>	<b>66</b>	<b>8.1%</b>
<b>Admin Finalisations</b>	<b>0</b>	<b>0.0%</b>	<b>24</b>	<b>100.0%</b>
<b>TOTAL</b>	<b>1,396</b>	<b>85.7%</b>	<b>233</b>	<b>14.3%</b>