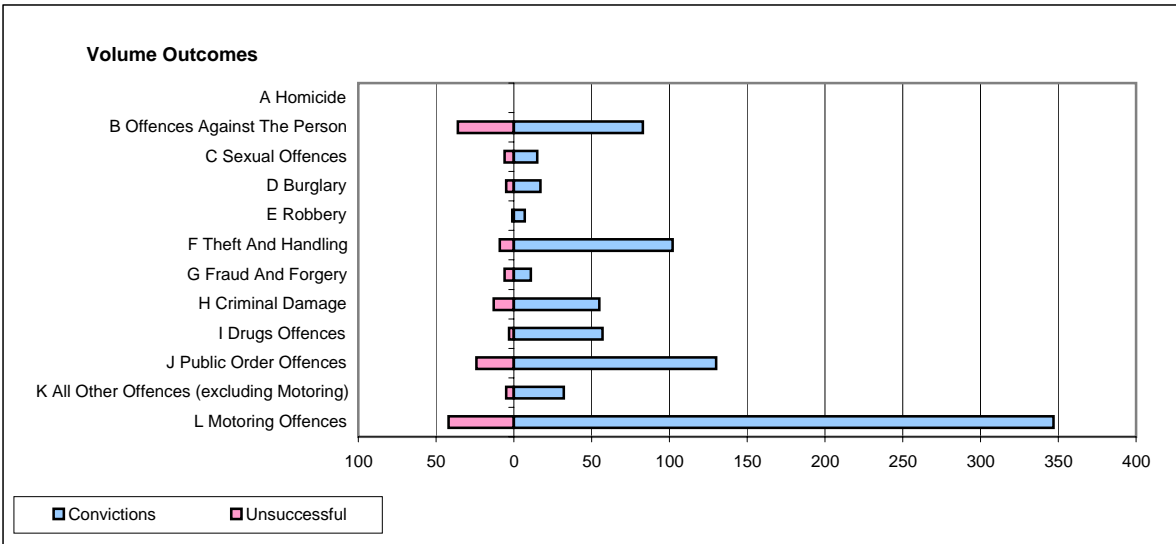
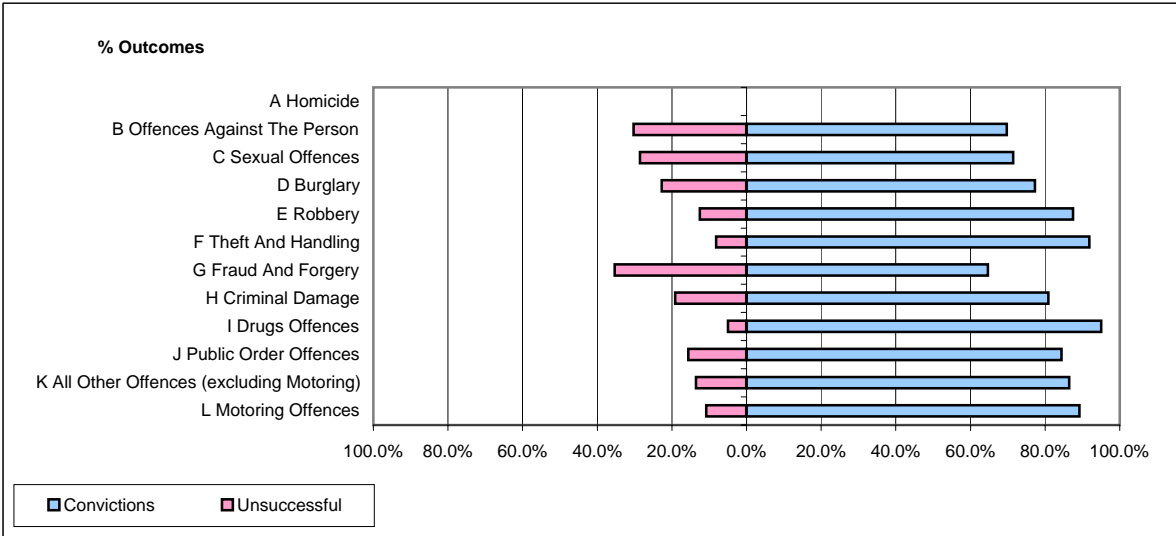


**CPS OUTCOMES BY PRINCIPAL OFFENCE CATEGORY**

**April 2008**

**P16-Gwent**



	Convictions		Unsuccessful	
	Number of Defendants	%	Number of Defendants	%
<b>A Homicide</b>	<b>0</b>	<b>0</b>	<b>0</b>	<b>0</b>
<b>B Offences Against The Person</b>	<b>83</b>	<b>69.7%</b>	<b>36</b>	<b>30.3%</b>
<b>C Sexual Offences</b>	<b>15</b>	<b>71.4%</b>	<b>6</b>	<b>28.6%</b>
<b>D Burglary</b>	<b>17</b>	<b>77.3%</b>	<b>5</b>	<b>22.7%</b>
<b>E Robbery</b>	<b>7</b>	<b>87.5%</b>	<b>1</b>	<b>12.5%</b>
<b>F Theft And Handling</b>	<b>102</b>	<b>91.9%</b>	<b>9</b>	<b>8.1%</b>
<b>G Fraud And Forgery</b>	<b>11</b>	<b>64.7%</b>	<b>6</b>	<b>35.3%</b>
<b>H Criminal Damage</b>	<b>55</b>	<b>80.9%</b>	<b>13</b>	<b>19.1%</b>
<b>I Drugs Offences</b>	<b>57</b>	<b>95.0%</b>	<b>3</b>	<b>5.0%</b>
<b>J Public Order Offences</b>	<b>130</b>	<b>84.4%</b>	<b>24</b>	<b>15.6%</b>
<b>K All Other Offences (excluding Motoring)</b>	<b>32</b>	<b>86.5%</b>	<b>5</b>	<b>13.5%</b>
<b>L Motoring Offences</b>	<b>347</b>	<b>89.2%</b>	<b>42</b>	<b>10.8%</b>
<b>Admin Finalisations</b>	<b>0</b>	<b>0.0%</b>	<b>13</b>	<b>100.0%</b>
<b>TOTAL</b>	<b>856</b>	<b>84.0%</b>	<b>163</b>	<b>16.0%</b>