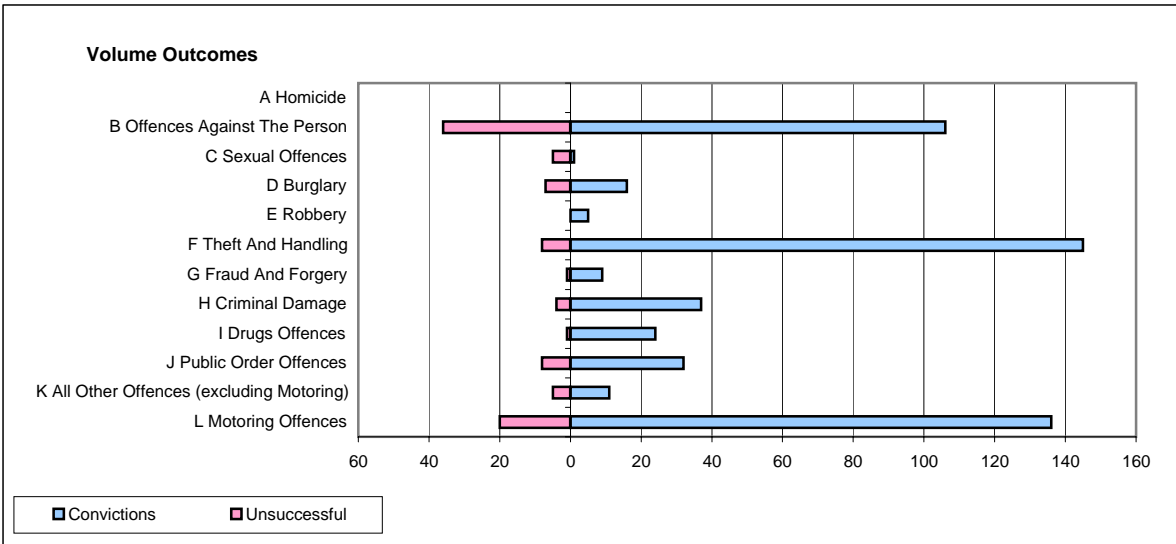
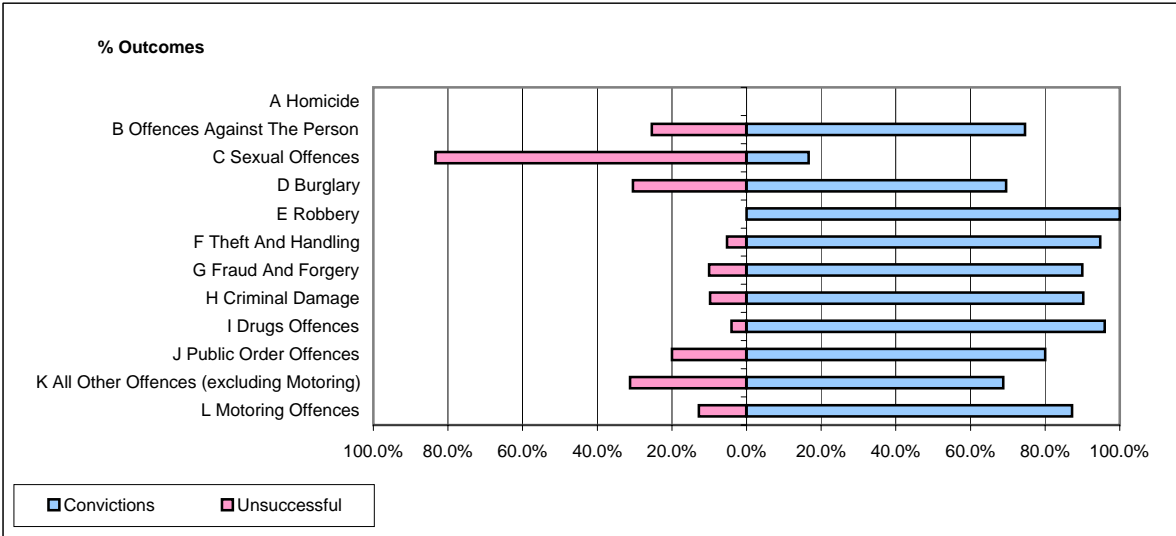


CPS OUTCOMES BY PRINCIPAL OFFENCE CATEGORY

April 2008

P14-Gloucestershire



	Convictions		Unsuccessful	
	Number of Defendants	%	Number of Defendants	%
A Homicide	0	0	0	0
B Offences Against The Person	106	74.6%	36	25.4%
C Sexual Offences	1	16.7%	5	83.3%
D Burglary	16	69.6%	7	30.4%
E Robbery	5	100.0%	0	0.0%
F Theft And Handling	145	94.8%	8	5.2%
G Fraud And Forgery	9	90.0%	1	10.0%
H Criminal Damage	37	90.2%	4	9.8%
I Drugs Offences	24	96.0%	1	4.0%
J Public Order Offences	32	80.0%	8	20.0%
K All Other Offences (excluding Motoring)	11	68.8%	5	31.3%
L Motoring Offences	136	87.2%	20	12.8%
Admin Finalisations	0	0.0%	10	100.0%
TOTAL	522	83.3%	105	16.7%