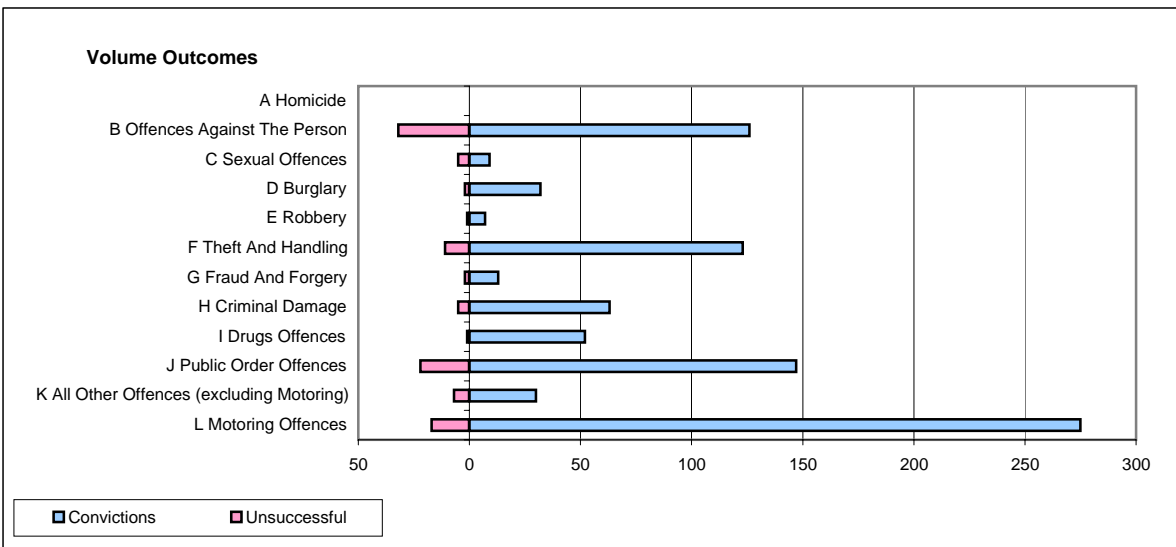
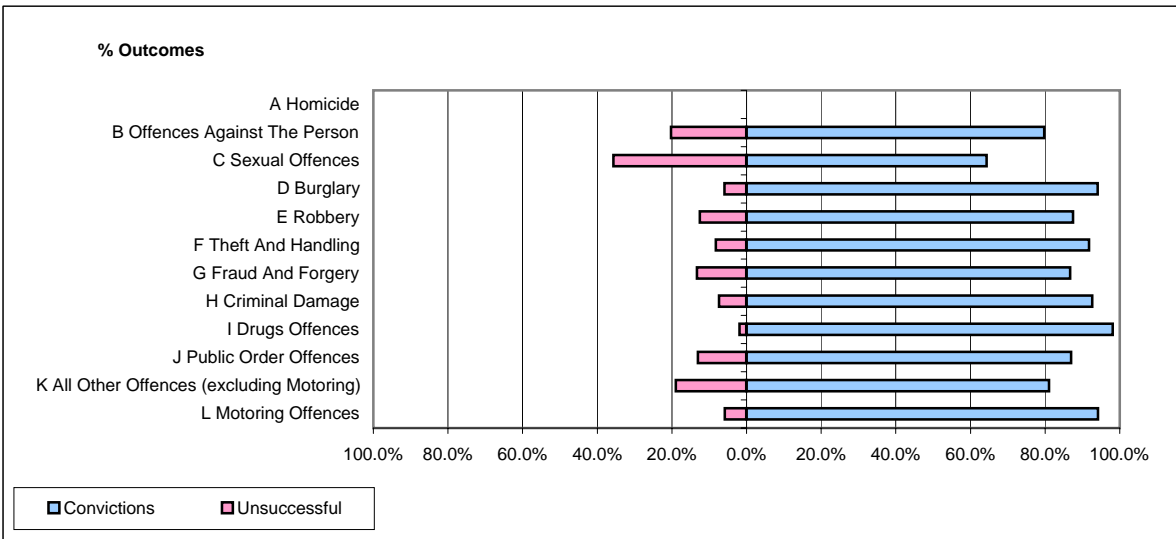


CPS OUTCOMES BY PRINCIPAL OFFENCE CATEGORY

April 2008

P11-Durham



	Convictions		Unsuccessful	
	Number of Defendants	%	Number of Defendants	%
A Homicide	0	0	0	0
B Offences Against The Person	126	79.7%	32	20.3%
C Sexual Offences	9	64.3%	5	35.7%
D Burglary	32	94.1%	2	5.9%
E Robbery	7	87.5%	1	12.5%
F Theft And Handling	123	91.8%	11	8.2%
G Fraud And Forgery	13	86.7%	2	13.3%
H Criminal Damage	63	92.6%	5	7.4%
I Drugs Offences	52	98.1%	1	1.9%
J Public Order Offences	147	87.0%	22	13.0%
K All Other Offences (excluding Motoring)	30	81.1%	7	18.9%
L Motoring Offences	275	94.2%	17	5.8%
Admin Finalisations	0	0.0%	3	100.0%
TOTAL	877	89.0%	108	11.0%