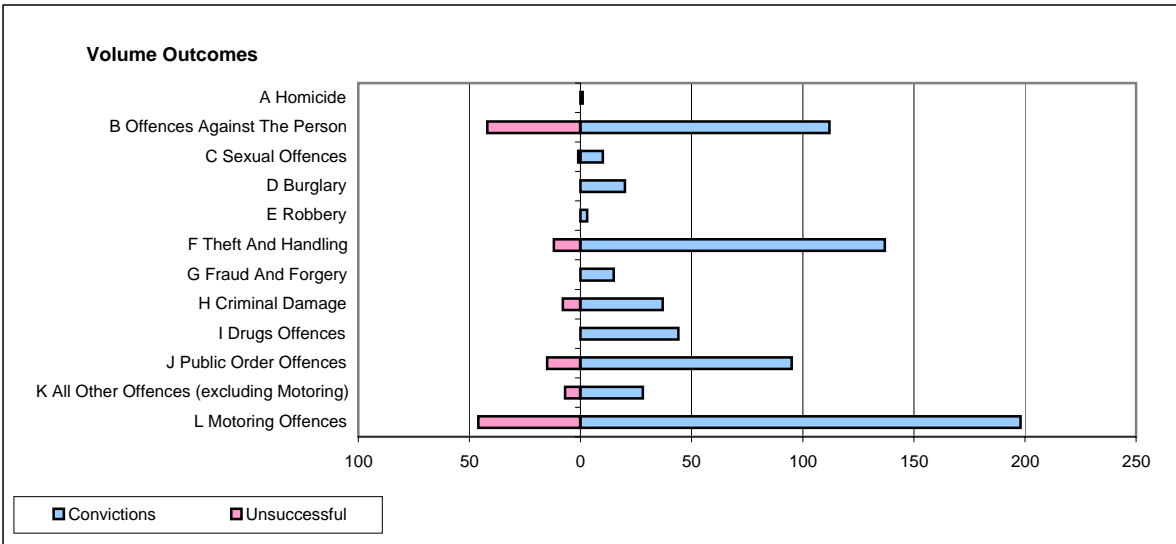
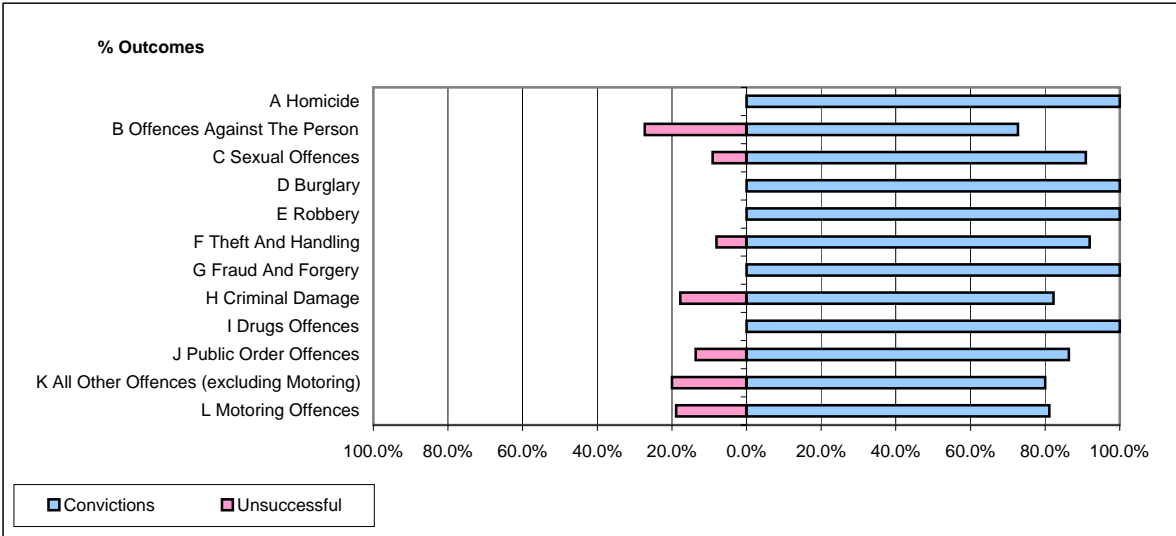


**CPS OUTCOMES BY PRINCIPAL OFFENCE CATEGORY**

**April 2008**

**P10-Dorset**



	Convictions		Unsuccessful	
	Number of Defendants	%	Number of Defendants	%
<b>A Homicide</b>	<b>1</b>	<b>100.0%</b>	<b>0</b>	<b>0.0%</b>
<b>B Offences Against The Person</b>	<b>112</b>	<b>72.7%</b>	<b>42</b>	<b>27.3%</b>
<b>C Sexual Offences</b>	<b>10</b>	<b>90.9%</b>	<b>1</b>	<b>9.1%</b>
<b>D Burglary</b>	<b>20</b>	<b>100.0%</b>	<b>0</b>	<b>0.0%</b>
<b>E Robbery</b>	<b>3</b>	<b>100.0%</b>	<b>0</b>	<b>0.0%</b>
<b>F Theft And Handling</b>	<b>137</b>	<b>91.9%</b>	<b>12</b>	<b>8.1%</b>
<b>G Fraud And Forgery</b>	<b>15</b>	<b>100.0%</b>	<b>0</b>	<b>0.0%</b>
<b>H Criminal Damage</b>	<b>37</b>	<b>82.2%</b>	<b>8</b>	<b>17.8%</b>
<b>I Drugs Offences</b>	<b>44</b>	<b>100.0%</b>	<b>0</b>	<b>0.0%</b>
<b>J Public Order Offences</b>	<b>95</b>	<b>86.4%</b>	<b>15</b>	<b>13.6%</b>
<b>K All Other Offences (excluding Motoring)</b>	<b>28</b>	<b>80.0%</b>	<b>7</b>	<b>20.0%</b>
<b>L Motoring Offences</b>	<b>198</b>	<b>81.1%</b>	<b>46</b>	<b>18.9%</b>
<b>Admin Finalisations</b>	<b>0</b>	<b>0.0%</b>	<b>22</b>	<b>100.0%</b>
<b>TOTAL</b>	<b>700</b>	<b>82.1%</b>	<b>153</b>	<b>17.9%</b>