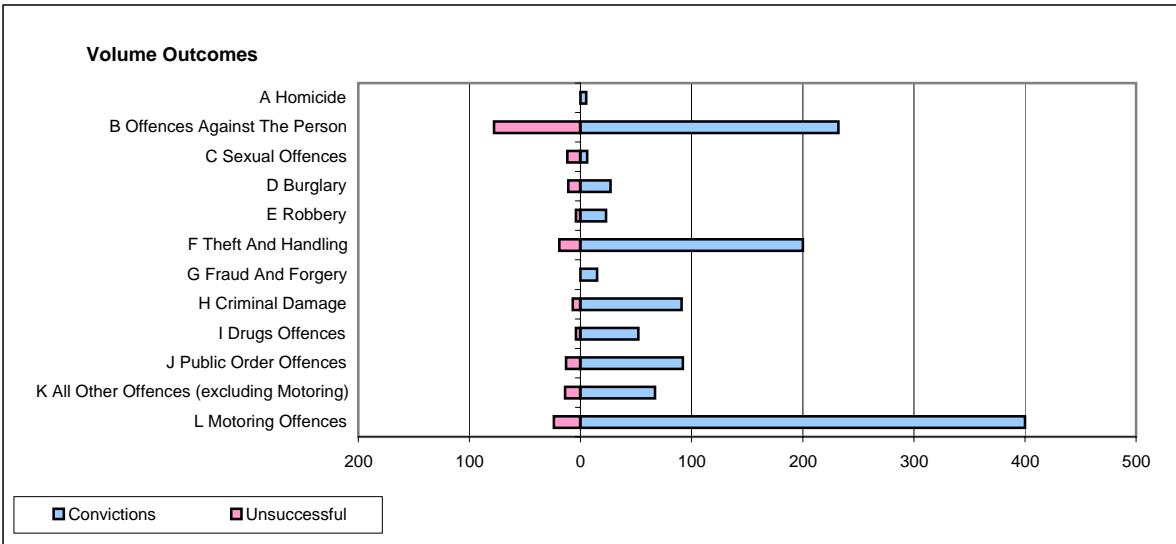
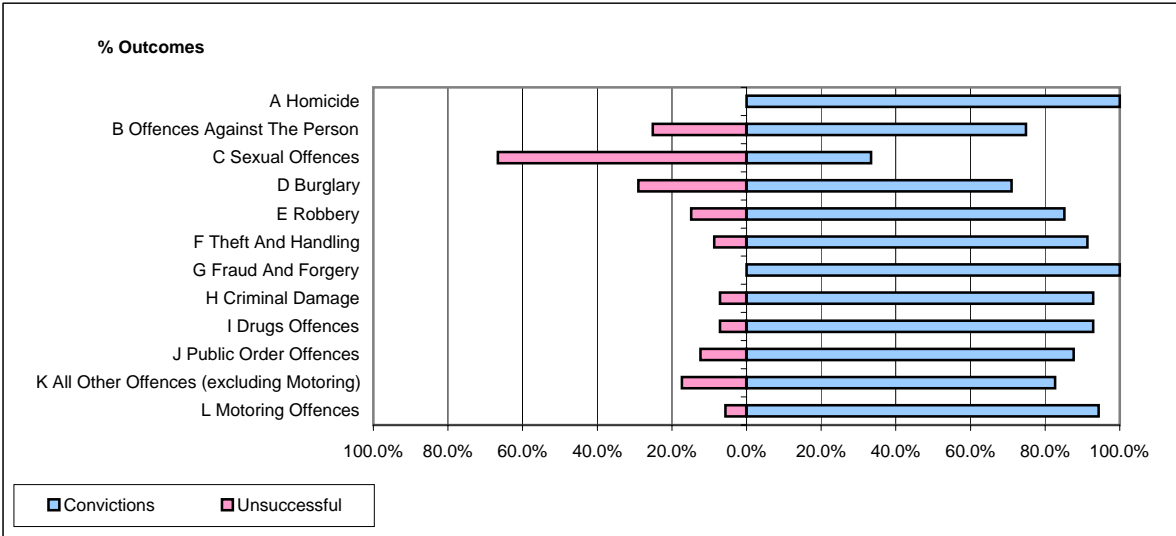


CPS OUTCOMES BY PRINCIPAL OFFENCE CATEGORY

April 2008

P08-Derbyshire



	Convictions		Unsuccessful	
	Number of Defendants	%	Number of Defendants	%
A Homicide	5	100.0%	0	0.0%
B Offences Against The Person	232	74.8%	78	25.2%
C Sexual Offences	6	33.3%	12	66.7%
D Burglary	27	71.1%	11	28.9%
E Robbery	23	85.2%	4	14.8%
F Theft And Handling	200	91.3%	19	8.7%
G Fraud And Forgery	15	100.0%	0	0.0%
H Criminal Damage	91	92.9%	7	7.1%
I Drugs Offences	52	92.9%	4	7.1%
J Public Order Offences	92	87.6%	13	12.4%
K All Other Offences (excluding Motoring)	67	82.7%	14	17.3%
L Motoring Offences	400	94.3%	24	5.7%
Admin Finalisations	0	0.0%	15	100.0%
TOTAL	1,210	85.8%	201	14.2%