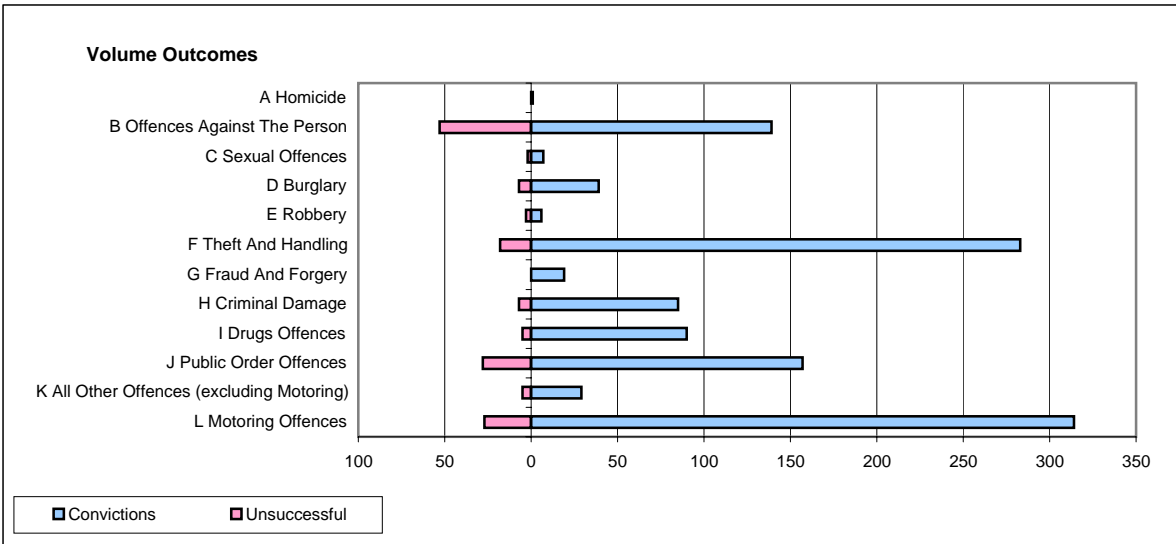
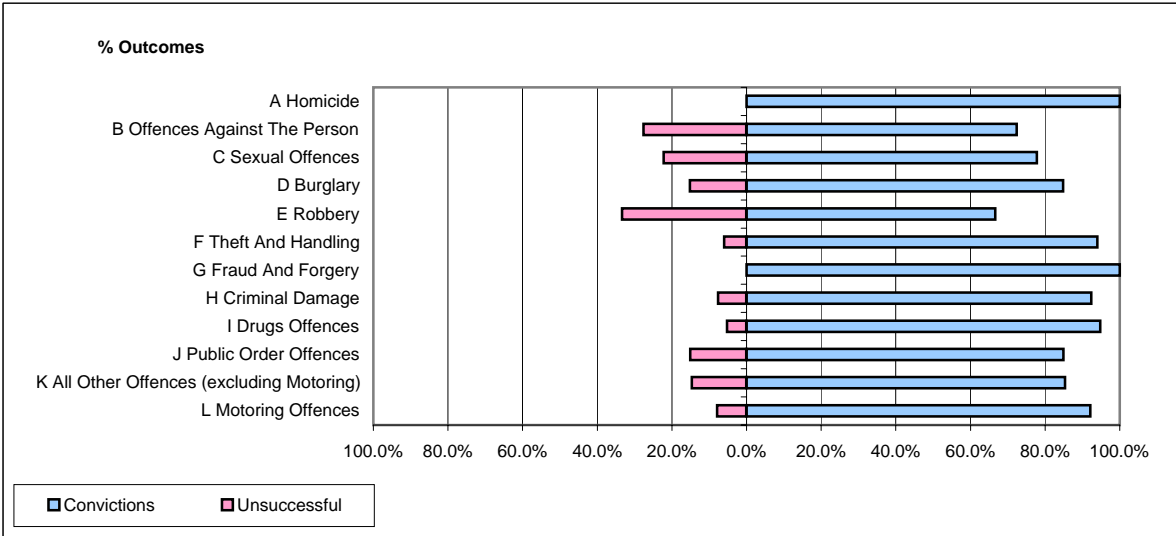


**CPS OUTCOMES BY PRINCIPAL OFFENCE CATEGORY**

**April 2008**

**P06-Cleveland**



	Convictions		Unsuccessful	
	Number of Defendants	%	Number of Defendants	%
<b>A Homicide</b>	<b>1</b>	<b>100.0%</b>	<b>0</b>	<b>0.0%</b>
<b>B Offences Against The Person</b>	<b>139</b>	<b>72.4%</b>	<b>53</b>	<b>27.6%</b>
<b>C Sexual Offences</b>	<b>7</b>	<b>77.8%</b>	<b>2</b>	<b>22.2%</b>
<b>D Burglary</b>	<b>39</b>	<b>84.8%</b>	<b>7</b>	<b>15.2%</b>
<b>E Robbery</b>	<b>6</b>	<b>66.7%</b>	<b>3</b>	<b>33.3%</b>
<b>F Theft And Handling</b>	<b>283</b>	<b>94.0%</b>	<b>18</b>	<b>6.0%</b>
<b>G Fraud And Forgery</b>	<b>19</b>	<b>100.0%</b>	<b>0</b>	<b>0.0%</b>
<b>H Criminal Damage</b>	<b>85</b>	<b>92.4%</b>	<b>7</b>	<b>7.6%</b>
<b>I Drugs Offences</b>	<b>90</b>	<b>94.7%</b>	<b>5</b>	<b>5.3%</b>
<b>J Public Order Offences</b>	<b>157</b>	<b>84.9%</b>	<b>28</b>	<b>15.1%</b>
<b>K All Other Offences (excluding Motoring)</b>	<b>29</b>	<b>85.3%</b>	<b>5</b>	<b>14.7%</b>
<b>L Motoring Offences</b>	<b>314</b>	<b>92.1%</b>	<b>27</b>	<b>7.9%</b>
<b>Admin Finalisations</b>	<b>0</b>	<b>0.0%</b>	<b>17</b>	<b>100.0%</b>
<b>TOTAL</b>	<b>1,169</b>	<b>87.2%</b>	<b>172</b>	<b>12.8%</b>