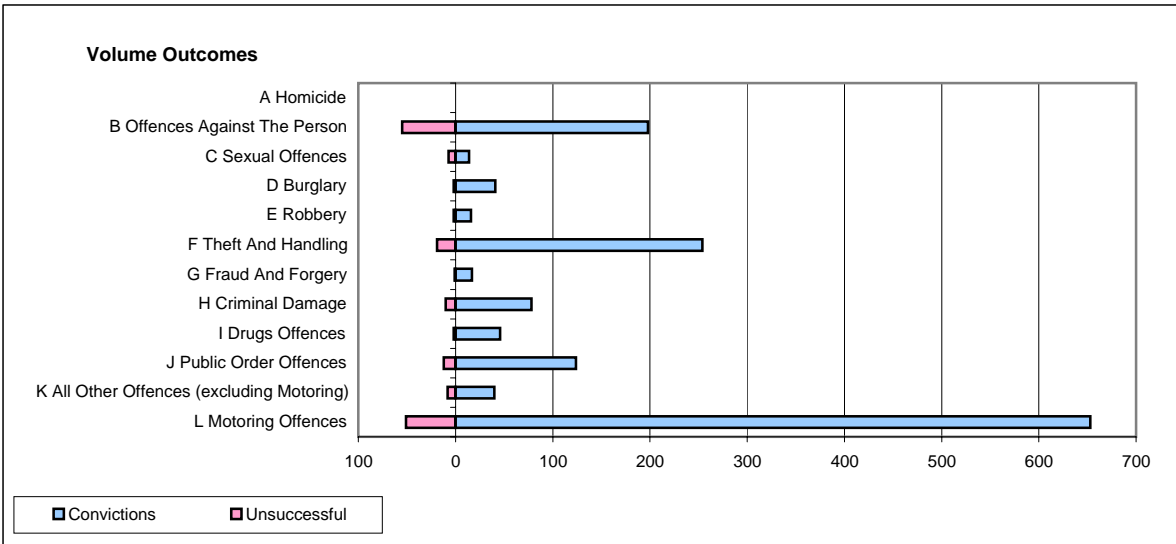
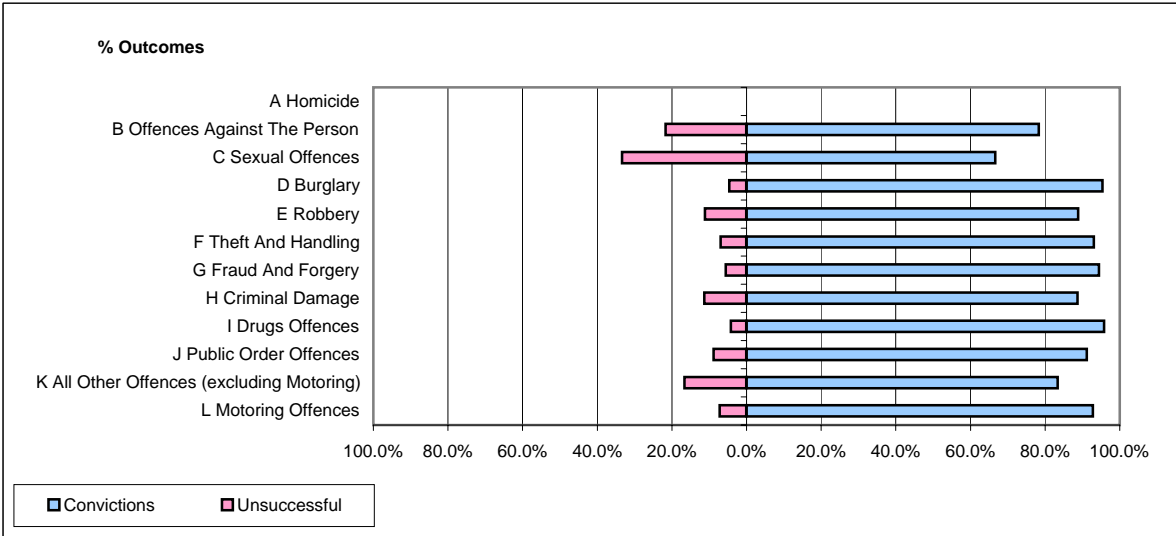


CPS OUTCOMES BY PRINCIPAL OFFENCE CATEGORY

April 2008

P04-Cheshire



	Convictions		Unsuccessful	
	Number of Defendants	%	Number of Defendants	%
A Homicide	0	0	0	0
B Offences Against The Person	198	78.3%	55	21.7%
C Sexual Offences	14	66.7%	7	33.3%
D Burglary	41	95.3%	2	4.7%
E Robbery	16	88.9%	2	11.1%
F Theft And Handling	254	93.0%	19	7.0%
G Fraud And Forgery	17	94.4%	1	5.6%
H Criminal Damage	78	88.6%	10	11.4%
I Drugs Offences	46	95.8%	2	4.2%
J Public Order Offences	124	91.2%	12	8.8%
K All Other Offences (excluding Motoring)	40	83.3%	8	16.7%
L Motoring Offences	653	92.8%	51	7.2%
Admin Finalisations	0	0.0%	13	100.0%
TOTAL	1,481	89.1%	182	10.9%