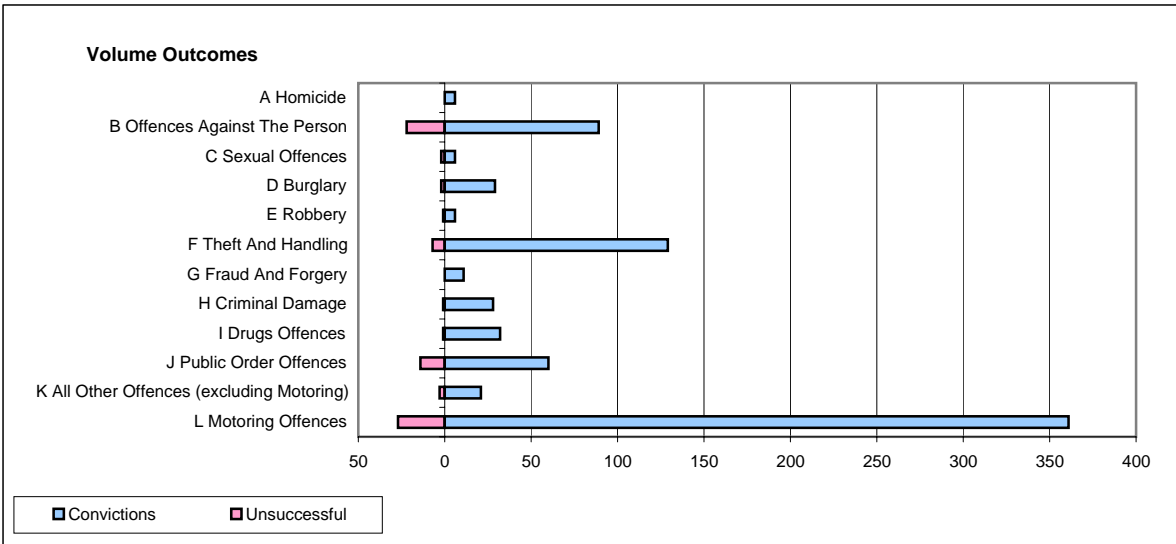
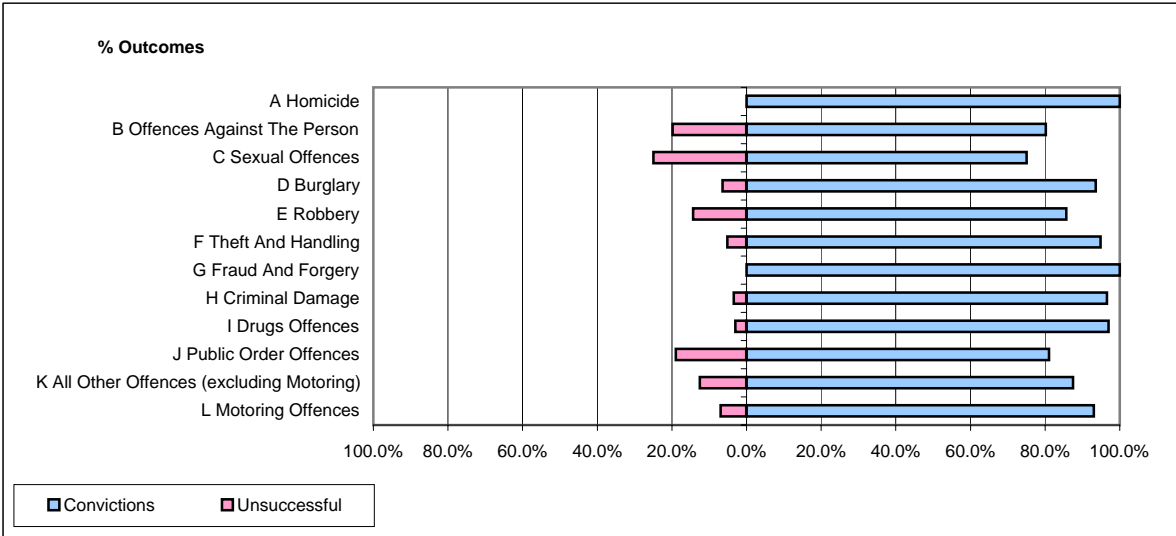


**CPS OUTCOMES BY PRINCIPAL OFFENCE CATEGORY**

**April 2008**

**P02-Bedfordshire**



	Convictions		Unsuccessful	
	Number of Defendants	%	Number of Defendants	%
<b>A Homicide</b>	6	100.0%	0	0.0%
<b>B Offences Against The Person</b>	89	80.2%	22	19.8%
<b>C Sexual Offences</b>	6	75.0%	2	25.0%
<b>D Burglary</b>	29	93.5%	2	6.5%
<b>E Robbery</b>	6	85.7%	1	14.3%
<b>F Theft And Handling</b>	129	94.9%	7	5.1%
<b>G Fraud And Forgery</b>	11	100.0%	0	0.0%
<b>H Criminal Damage</b>	28	96.6%	1	3.4%
<b>I Drugs Offences</b>	32	97.0%	1	3.0%
<b>J Public Order Offences</b>	60	81.1%	14	18.9%
<b>K All Other Offences (excluding Motoring)</b>	21	87.5%	3	12.5%
<b>L Motoring Offences</b>	361	93.0%	27	7.0%
<b>Admin Finalisations</b>	0	0.0%	7	100.0%
<b>TOTAL</b>	<b>778</b>	<b>89.9%</b>	<b>87</b>	<b>10.1%</b>