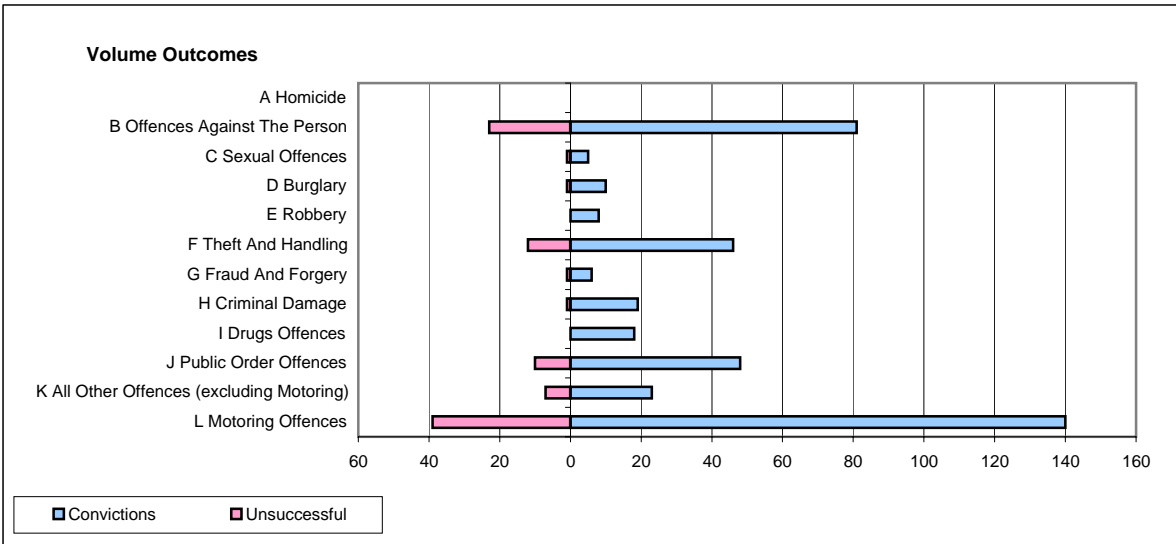
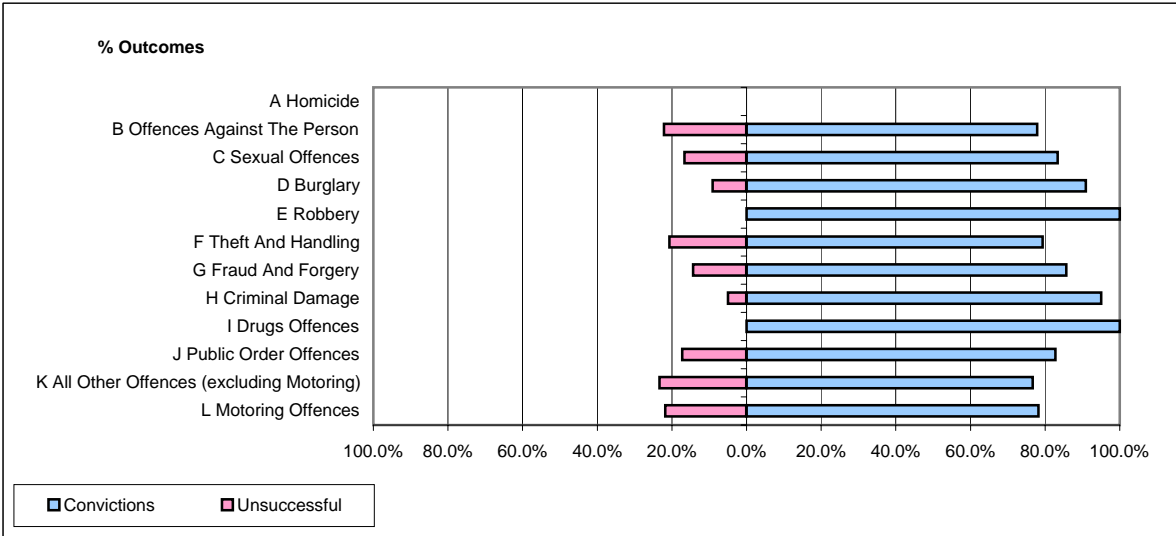


CPS OUTCOMES BY PRINCIPAL OFFENCE CATEGORY

March 2008

P43-Wiltshire



	Convictions		Unsuccessful	
	Number of Defendants	%	Number of Defendants	%
A Homicide	0	0	0	0
B Offences Against The Person	81	77.9%	23	22.1%
C Sexual Offences	5	83.3%	1	16.7%
D Burglary	10	90.9%	1	9.1%
E Robbery	8	100.0%	0	0.0%
F Theft And Handling	46	79.3%	12	20.7%
G Fraud And Forgery	6	85.7%	1	14.3%
H Criminal Damage	19	95.0%	1	5.0%
I Drugs Offences	18	100.0%	0	0.0%
J Public Order Offences	48	82.8%	10	17.2%
K All Other Offences (excluding Motoring)	23	76.7%	7	23.3%
L Motoring Offences	140	78.2%	39	21.8%
Admin Finalisations	0	0.0%	7	100.0%
TOTAL	404	79.8%	102	20.2%