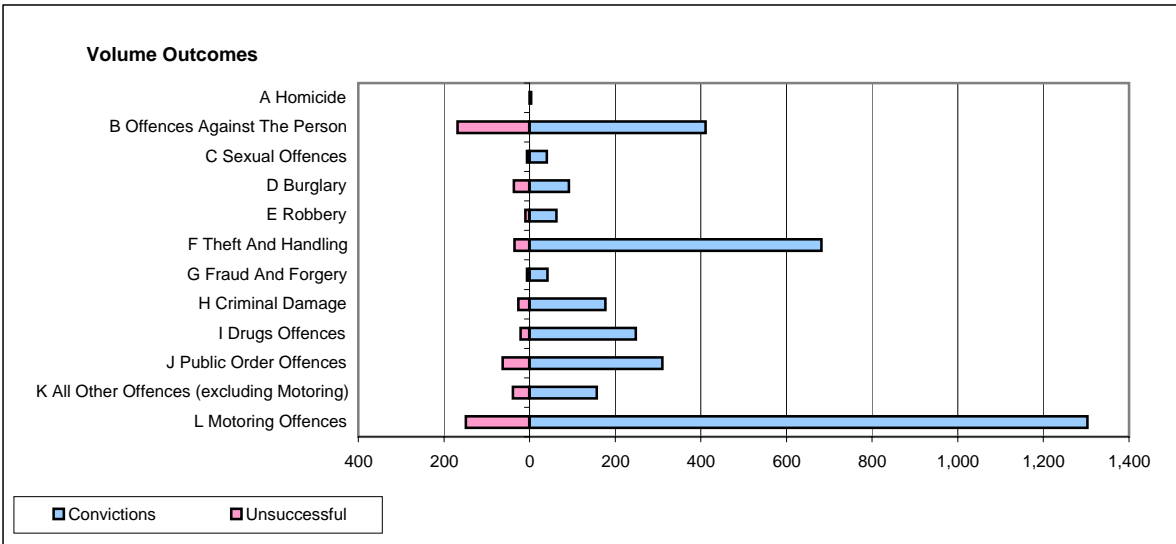
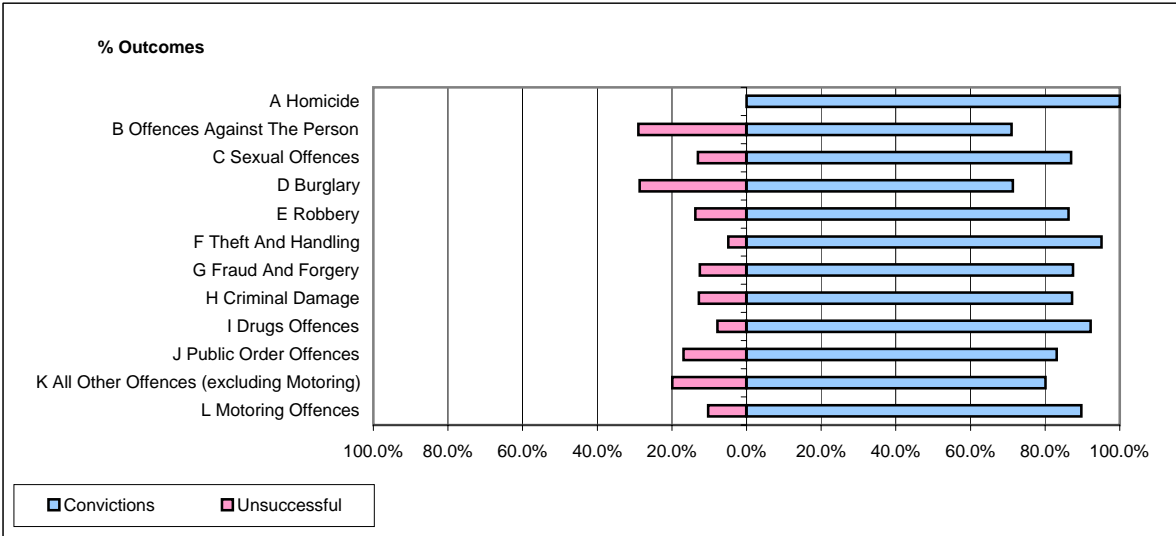


CPS OUTCOMES BY PRINCIPAL OFFENCE CATEGORY

March 2008

P41-WestMidlands



	Convictions		Unsuccessful	
	Number of Defendants	%	Number of Defendants	%
A Homicide	4	100.0%	0	0.0%
B Offences Against The Person	411	71.0%	168	29.0%
C Sexual Offences	40	87.0%	6	13.0%
D Burglary	92	71.3%	37	28.7%
E Robbery	63	86.3%	10	13.7%
F Theft And Handling	682	95.1%	35	4.9%
G Fraud And Forgery	42	87.5%	6	12.5%
H Criminal Damage	177	87.2%	26	12.8%
I Drugs Offences	248	92.2%	21	7.8%
J Public Order Offences	310	83.1%	63	16.9%
K All Other Offences (excluding Motoring)	157	80.1%	39	19.9%
L Motoring Offences	1,303	89.7%	149	10.3%
Admin Finalisations	0	0.0%	47	100.0%
TOTAL	3,529	85.3%	607	14.7%