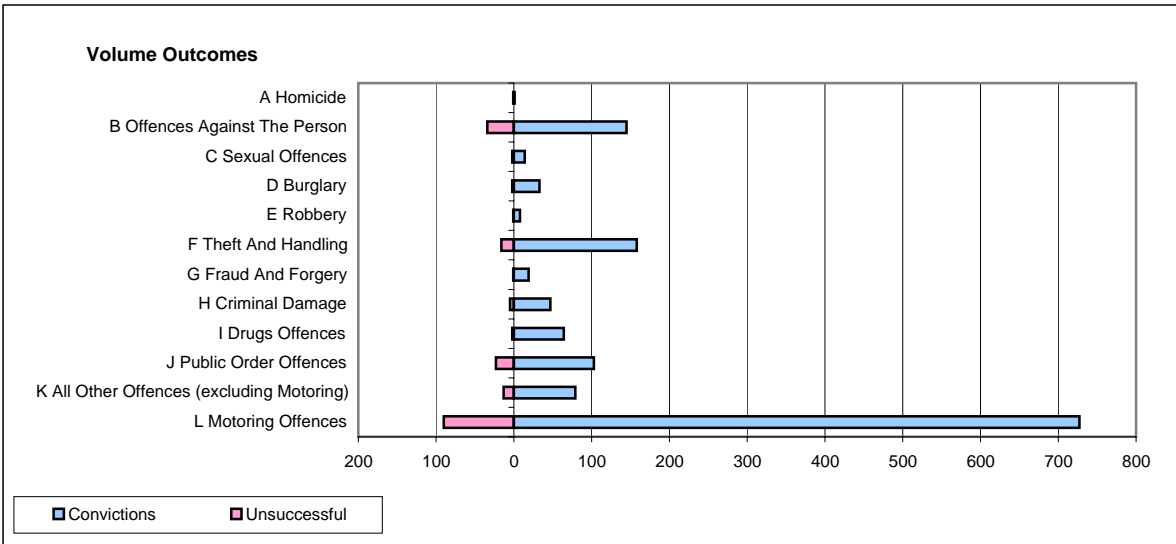
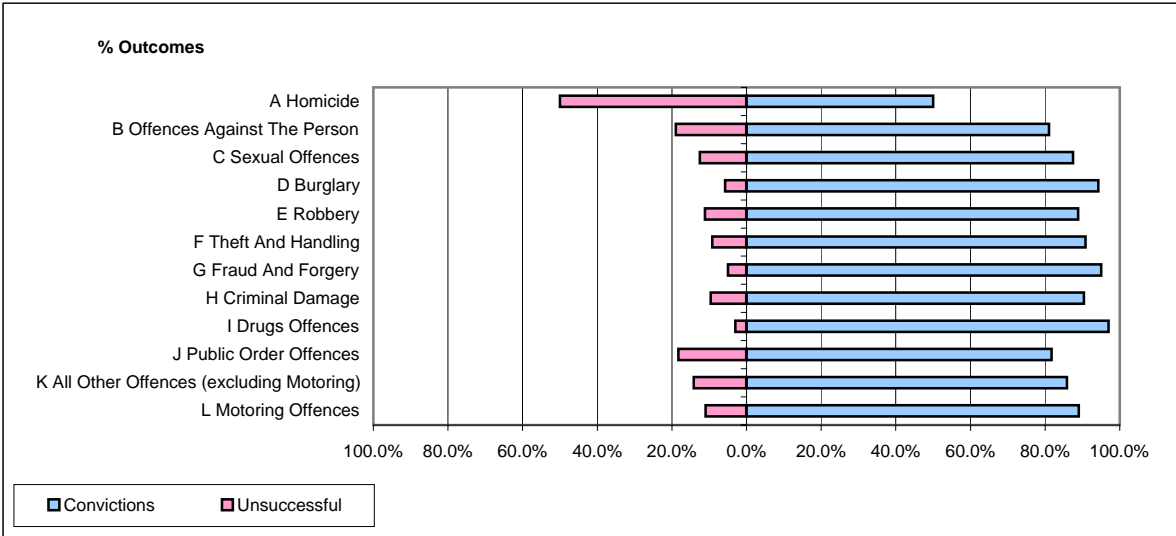


CPS OUTCOMES BY PRINCIPAL OFFENCE CATEGORY

March 2008

P40-WestMercia



	Convictions		Unsuccessful	
	Number of Defendants	%	Number of Defendants	%
A Homicide	1	50.0%	1	50.0%
B Offences Against The Person	145	81.0%	34	19.0%
C Sexual Offences	14	87.5%	2	12.5%
D Burglary	33	94.3%	2	5.7%
E Robbery	8	88.9%	1	11.1%
F Theft And Handling	158	90.8%	16	9.2%
G Fraud And Forgery	19	95.0%	1	5.0%
H Criminal Damage	47	90.4%	5	9.6%
I Drugs Offences	64	97.0%	2	3.0%
J Public Order Offences	103	81.7%	23	18.3%
K All Other Offences (excluding Motoring)	79	85.9%	13	14.1%
L Motoring Offences	727	89.0%	90	11.0%
Admin Finalisations	0	0.0%	11	100.0%
TOTAL	1,398	87.4%	201	12.6%