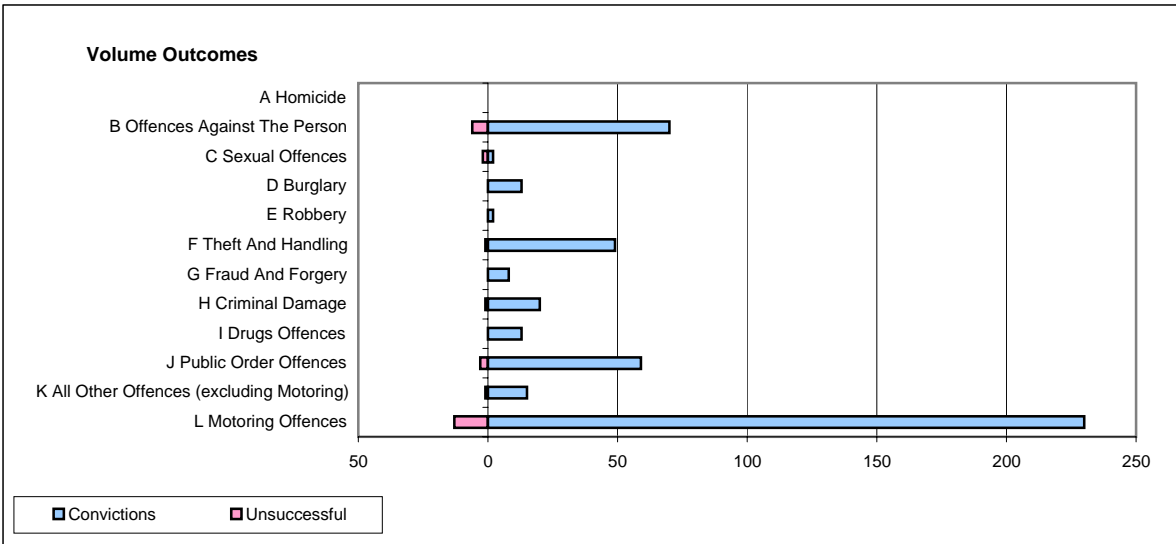
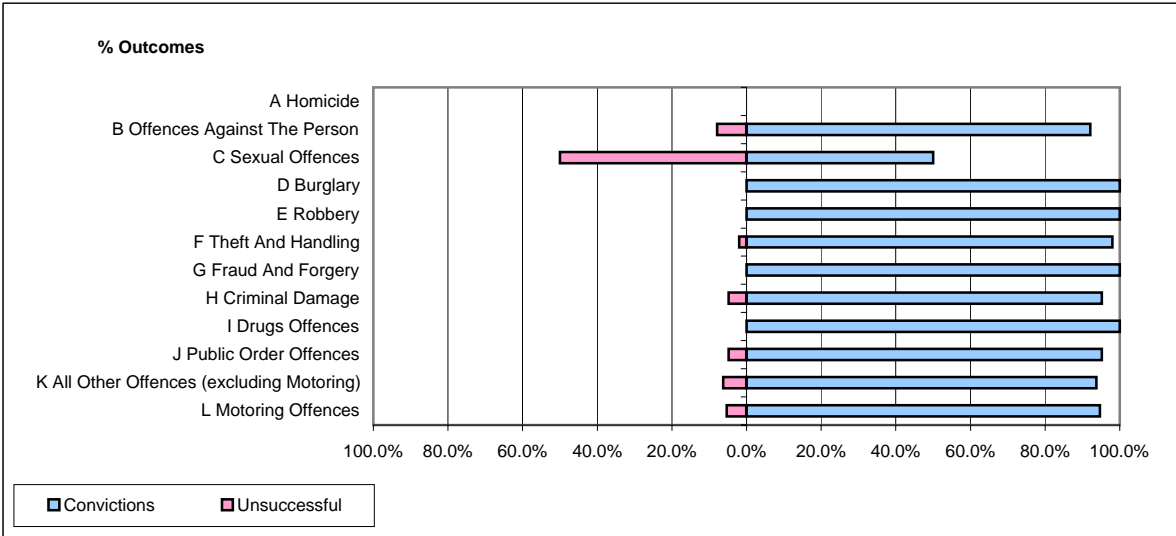


**CPS OUTCOMES BY PRINCIPAL OFFENCE CATEGORY**

**March 2008**

**P39-Warwickshire**



	Convictions		Unsuccessful	
	Number of Defendants	%	Number of Defendants	%
<b>A Homicide</b>	<b>0</b>	<b>0</b>	<b>0</b>	<b>0</b>
<b>B Offences Against The Person</b>	<b>70</b>	<b>92.1%</b>	<b>6</b>	<b>7.9%</b>
<b>C Sexual Offences</b>	<b>2</b>	<b>50.0%</b>	<b>2</b>	<b>50.0%</b>
<b>D Burglary</b>	<b>13</b>	<b>100.0%</b>	<b>0</b>	<b>0.0%</b>
<b>E Robbery</b>	<b>2</b>	<b>100.0%</b>	<b>0</b>	<b>0.0%</b>
<b>F Theft And Handling</b>	<b>49</b>	<b>98.0%</b>	<b>1</b>	<b>2.0%</b>
<b>G Fraud And Forgery</b>	<b>8</b>	<b>100.0%</b>	<b>0</b>	<b>0.0%</b>
<b>H Criminal Damage</b>	<b>20</b>	<b>95.2%</b>	<b>1</b>	<b>4.8%</b>
<b>I Drugs Offences</b>	<b>13</b>	<b>100.0%</b>	<b>0</b>	<b>0.0%</b>
<b>J Public Order Offences</b>	<b>59</b>	<b>95.2%</b>	<b>3</b>	<b>4.8%</b>
<b>K All Other Offences (excluding Motoring)</b>	<b>15</b>	<b>93.8%</b>	<b>1</b>	<b>6.3%</b>
<b>L Motoring Offences</b>	<b>230</b>	<b>94.7%</b>	<b>13</b>	<b>5.3%</b>
<b>Admin Finalisations</b>	<b>0</b>	<b>0.0%</b>	<b>10</b>	<b>100.0%</b>
<b>TOTAL</b>	<b>481</b>	<b>92.9%</b>	<b>37</b>	<b>7.1%</b>