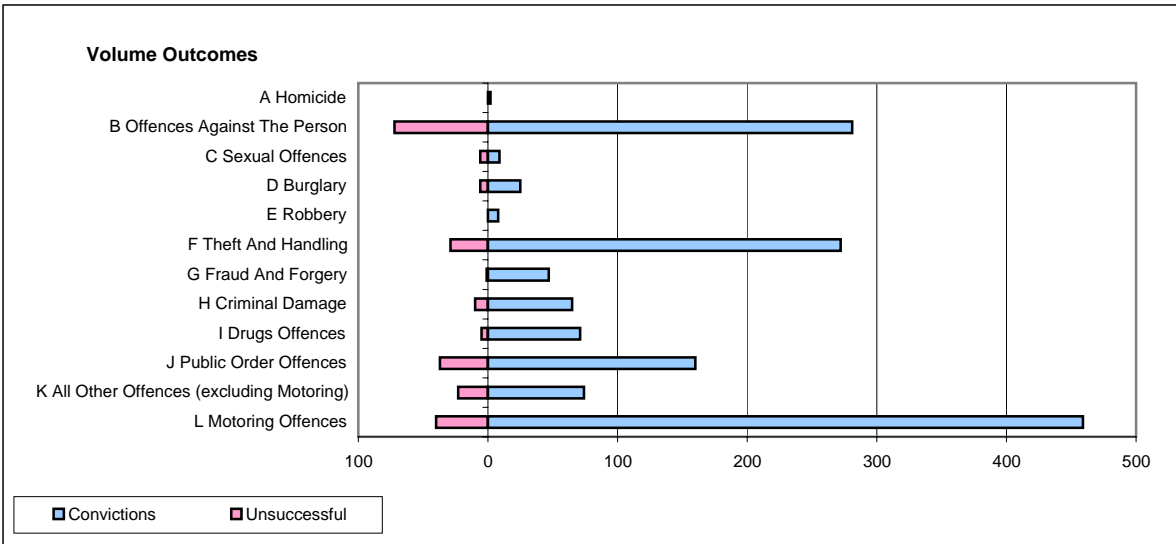
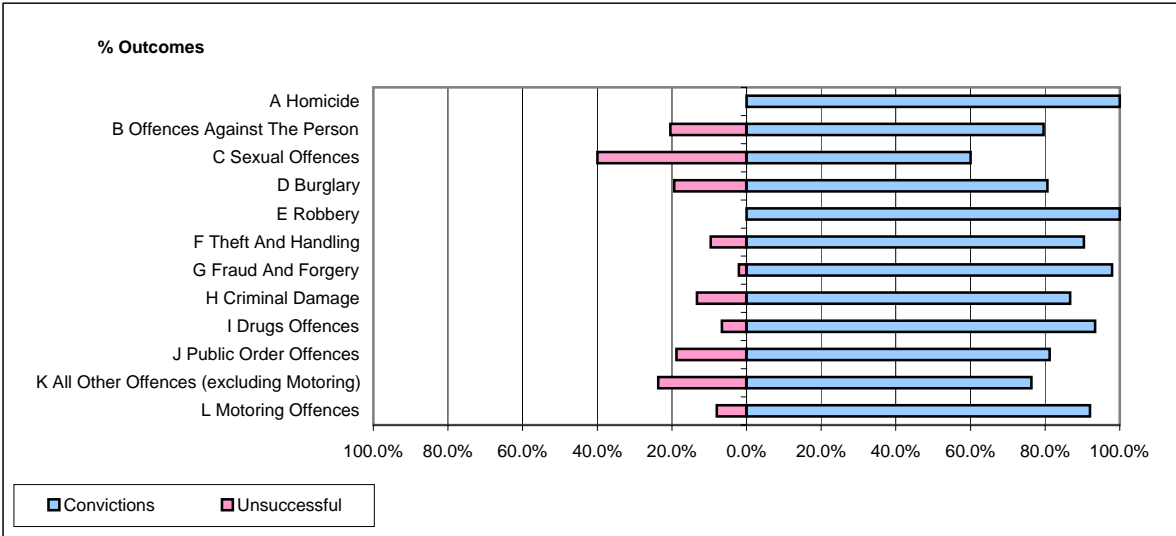


CPS OUTCOMES BY PRINCIPAL OFFENCE CATEGORY

March 2008

P37-Sussex



	Convictions		Unsuccessful	
	Number of Defendants	%	Number of Defendants	%
A Homicide	2	100.0%	0	0.0%
B Offences Against The Person	281	79.6%	72	20.4%
C Sexual Offences	9	60.0%	6	40.0%
D Burglary	25	80.6%	6	19.4%
E Robbery	8	100.0%	0	0.0%
F Theft And Handling	272	90.4%	29	9.6%
G Fraud And Forgery	47	97.9%	1	2.1%
H Criminal Damage	65	86.7%	10	13.3%
I Drugs Offences	71	93.4%	5	6.6%
J Public Order Offences	160	81.2%	37	18.8%
K All Other Offences (excluding Motoring)	74	76.3%	23	23.7%
L Motoring Offences	459	92.0%	40	8.0%
Admin Finalisations	0	0.0%	20	100.0%
TOTAL	1,473	85.5%	249	14.5%