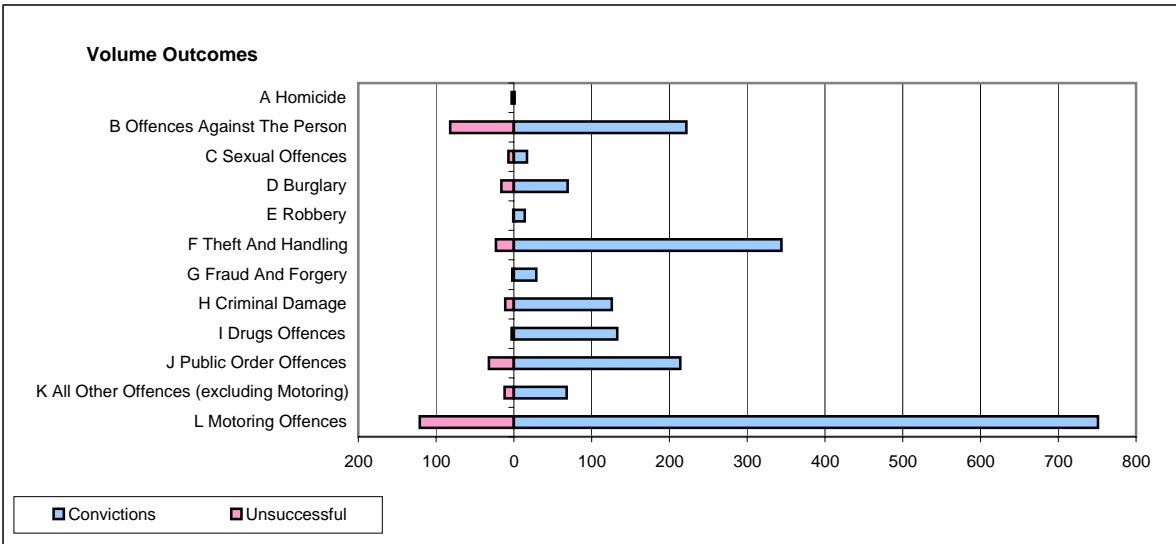
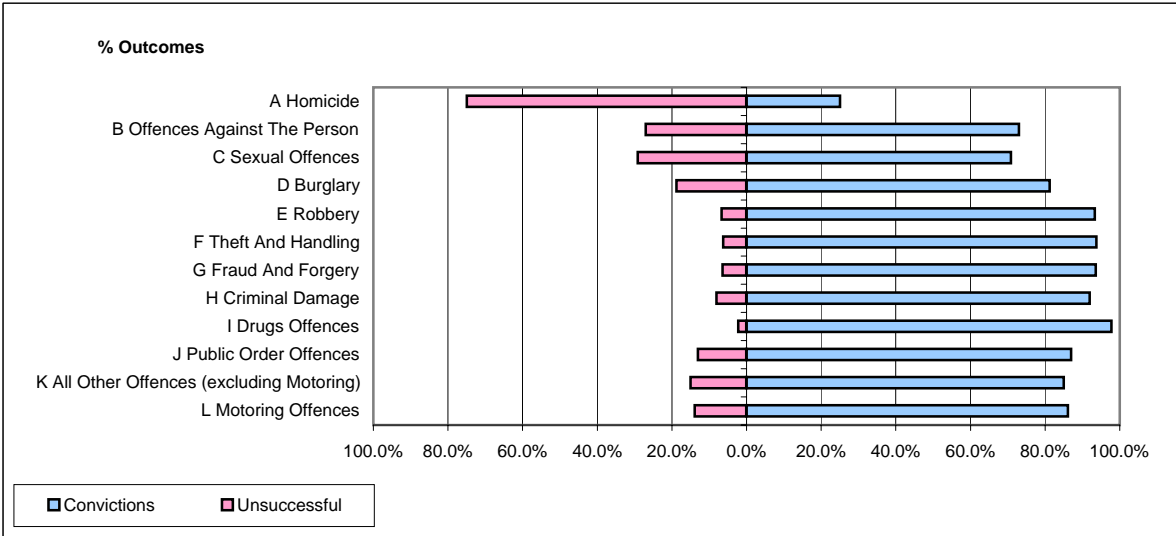


CPS OUTCOMES BY PRINCIPAL OFFENCE CATEGORY

March 2008

P32-SouthWales



	Convictions		Unsuccessful	
	Number of Defendants	%	Number of Defendants	%
A Homicide	1	25.0%	3	75.0%
B Offences Against The Person	222	73.0%	82	27.0%
C Sexual Offences	17	70.8%	7	29.2%
D Burglary	69	81.2%	16	18.8%
E Robbery	14	93.3%	1	6.7%
F Theft And Handling	344	93.7%	23	6.3%
G Fraud And Forgery	29	93.5%	2	6.5%
H Criminal Damage	126	92.0%	11	8.0%
I Drugs Offences	133	97.8%	3	2.2%
J Public Order Offences	214	87.0%	32	13.0%
K All Other Offences (excluding Motoring)	68	85.0%	12	15.0%
L Motoring Offences	751	86.1%	121	13.9%
Admin Finalisations	0	0.0%	42	100.0%
TOTAL	1,988	84.8%	355	15.2%